

Levi's Stadium Access Inspection

4900 Marie P DeBartolo Way, Santa Clara, California 95954

Survey Dates: January 24, 25 & 26, 2018



DSCF0314 (Copy)



DSCF0315 (Copy)



DSCF0316 (Copy)



DSCF0317 (Copy)



DSCF0318 (Copy)



DSCF0319 (Copy)

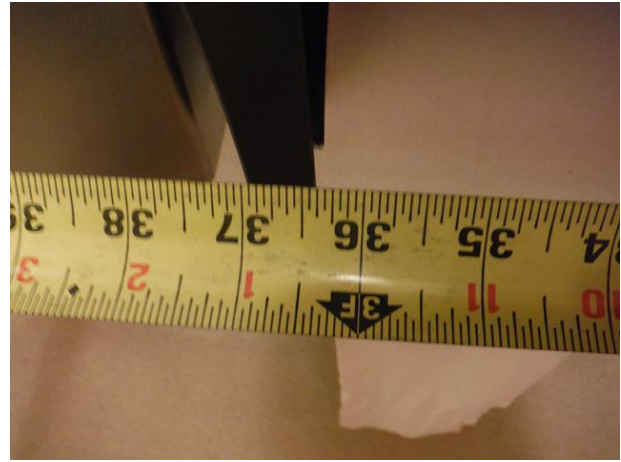
Levi's Stadium Access Inspection

4900 Marie P DeBartolo Way, Santa Clara, California 95954

Survey Dates: January 24, 25 & 26, 2018



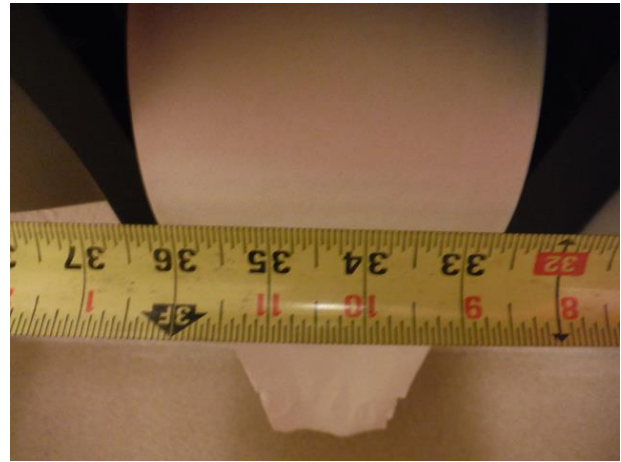
DSCF0320 (Copy)



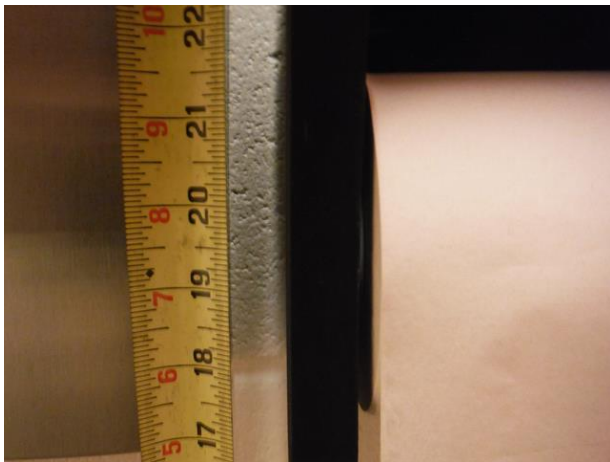
DSCF0321 (Copy)



DSCF0322 (Copy)



DSCF0323 (Copy)



DSCF0324 (Copy)



DSCF0325 (Copy)

Levi's Stadium Access Inspection

4900 Marie P DeBartolo Way, Santa Clara, California 95954

Survey Dates: January 24, 25 & 26, 2018



DSCF0326 (Copy)



DSCF0327 (Copy)



DSCF0328 (Copy)



DSCF0329 (Copy)



DSCF0330 (Copy)

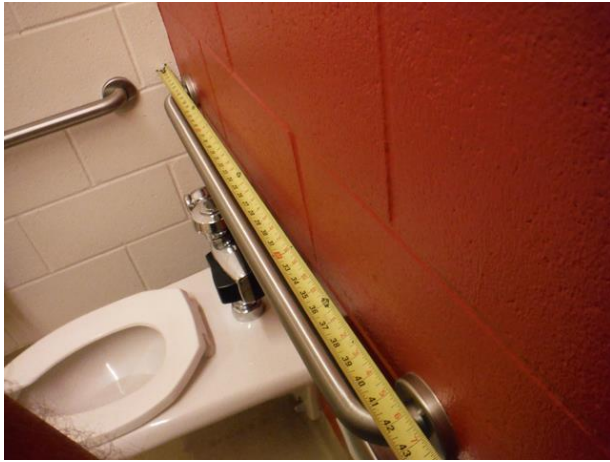


DSCF0331 (Copy)

Levi's Stadium Access Inspection

4900 Marie P DeBartolo Way, Santa Clara, California 95954

Survey Dates: January 24, 25 & 26, 2018



DSCF0332 (Copy)



DSCF0333 (Copy)



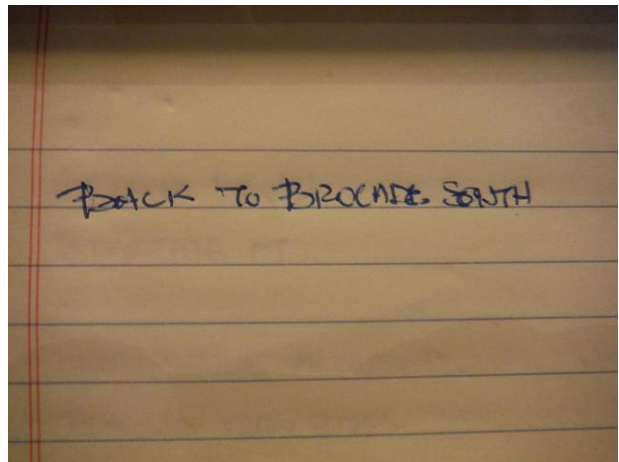
DSCF0334 (Copy)



DSCF0335 (Copy)



DSCF0336 (Copy)



DSCF0337 (Copy)

Levi's Stadium Access Inspection

4900 Marie P DeBartolo Way, Santa Clara, California 95954

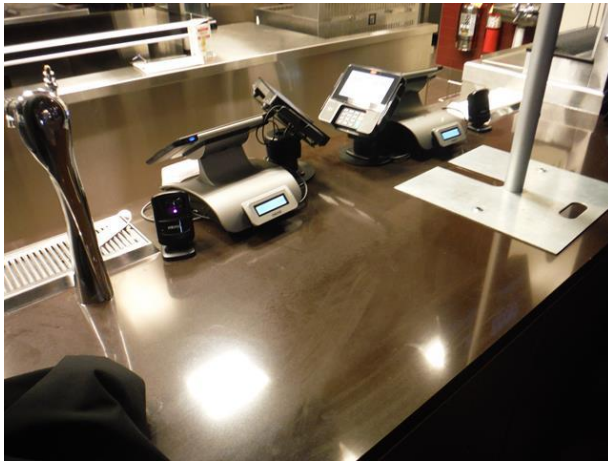
Survey Dates: January 24, 25 & 26, 2018



DSCF0338 (Copy)



DSCF0339 (Copy)



DSCF0340 (Copy)



DSCF0341 (Copy)



DSCF0342 (Copy)



DSCF0343 (Copy)

Levi's Stadium Access Inspection

4900 Marie P DeBartolo Way, Santa Clara, California 95954

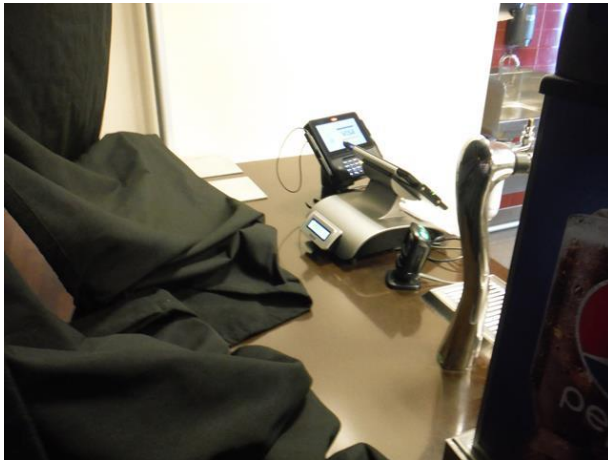
Survey Dates: January 24, 25 & 26, 2018



DSCF0344 (Copy)



DSCF0345 (Copy)



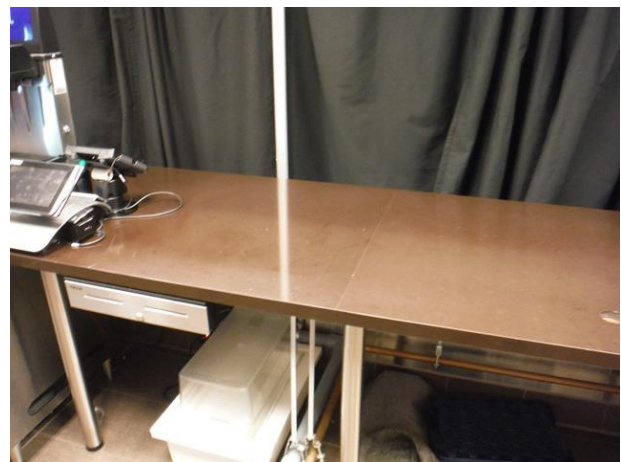
DSCF0346 (Copy)



DSCF0347 (Copy)



DSCF0348 (Copy)



DSCF0349 (Copy)

Levi's Stadium Access Inspection

4900 Marie P DeBartolo Way, Santa Clara, California 95954

Survey Dates: January 24, 25 & 26, 2018



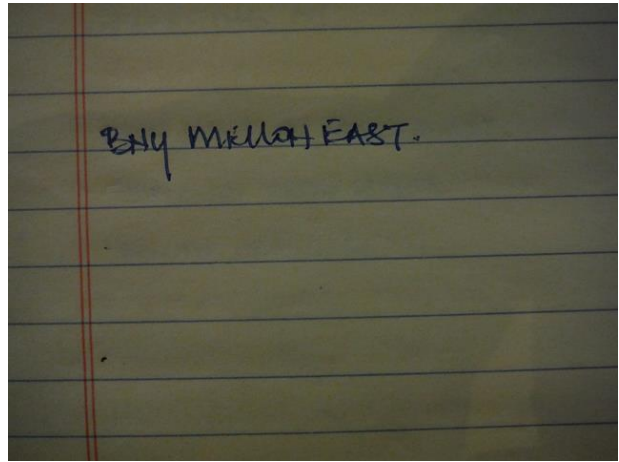
DSCF0350 (Copy)



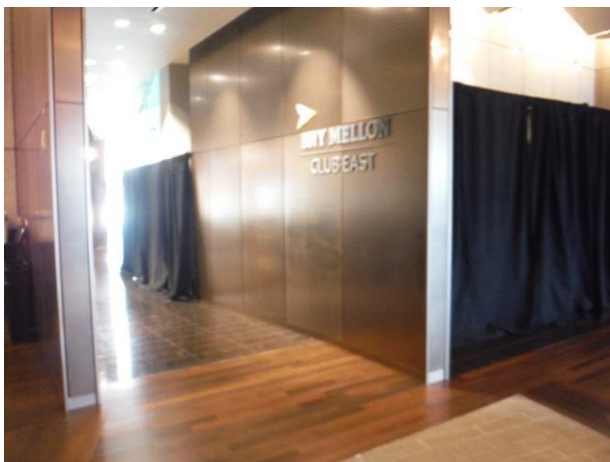
DSCF0351 (Copy)



DSCF0352 (Copy)



DSCF0353 (Copy)



DSCF0354 (Copy)



DSCF0355 (Copy)

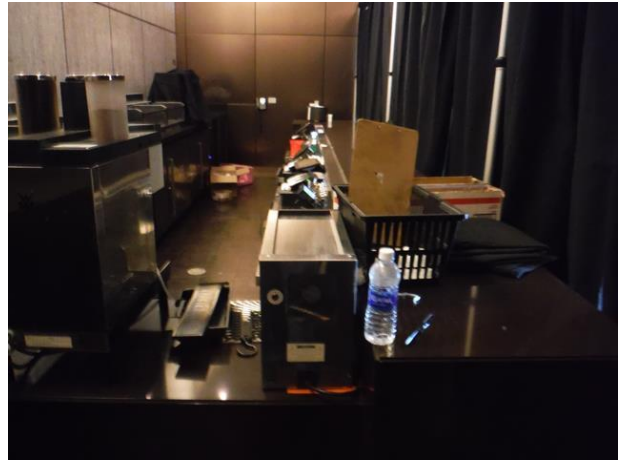
Levi's Stadium Access Inspection

4900 Marie P DeBartolo Way, Santa Clara, California 95954

Survey Dates: January 24, 25 & 26, 2018



DSCF0356 (Copy)



DSCF0357 (Copy)



DSCF0358 (Copy)



DSCF0359 (Copy)



DSCF0360 (Copy)

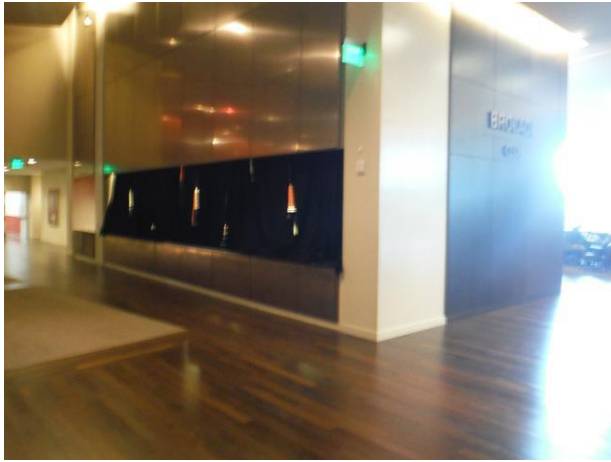


DSCF0361 (Copy)

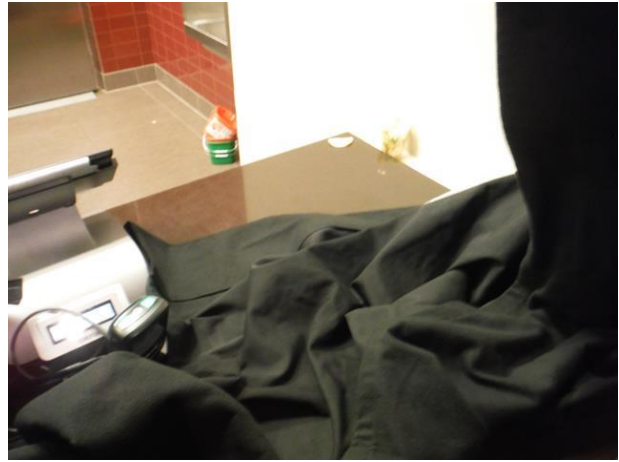
Levi's Stadium Access Inspection

4900 Marie P DeBartolo Way, Santa Clara, California 95954

Survey Dates: January 24, 25 & 26, 2018



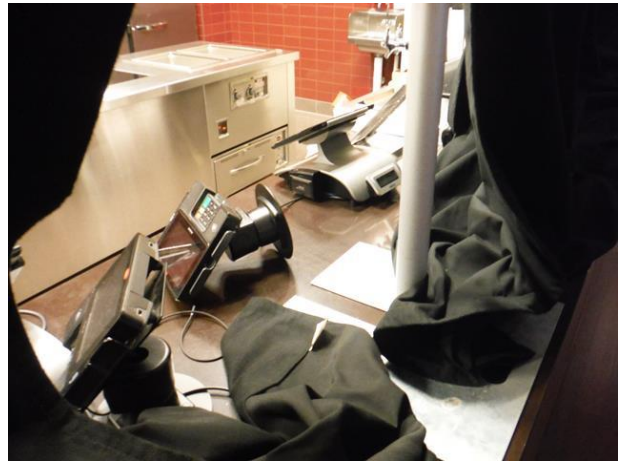
DSCF0362 (Copy)



DSCF0363 (Copy)



DSCF0364 (Copy)



DSCF0365 (Copy)



DSCF0366 (Copy)



DSCF0367 (Copy)

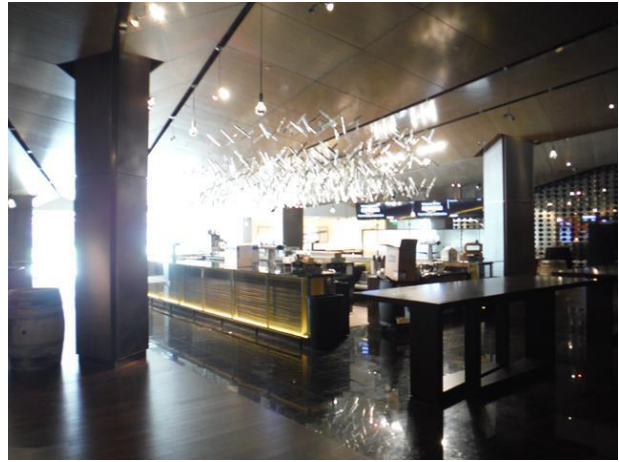
Levi's Stadium Access Inspection

4900 Marie P DeBartolo Way, Santa Clara, California 95954

Survey Dates: January 24, 25 & 26, 2018



DSCF0368 (Copy)



DSCF0369 (Copy)



DSCF0370 (Copy)



DSCF0371 (Copy)



DSCF0372 (Copy)



DSCF0373 (Copy)

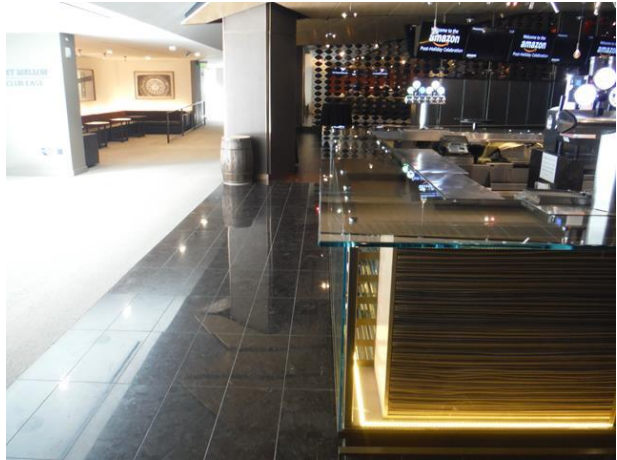
Levi's Stadium Access Inspection

4900 Marie P DeBartolo Way, Santa Clara, California 95954

Survey Dates: January 24, 25 & 26, 2018



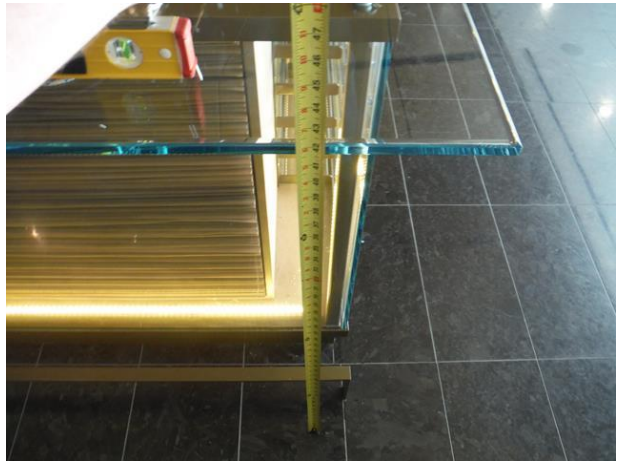
DSCF0374 (Copy)



DSCF0375 (Copy)



DSCF0376 (Copy)



DSCF0377 (Copy)



DSCF0378 (Copy)



DSCF0379 (Copy)

Levi's Stadium Access Inspection

4900 Marie P DeBartolo Way, Santa Clara, California 95954

Survey Dates: January 24, 25 & 26, 2018



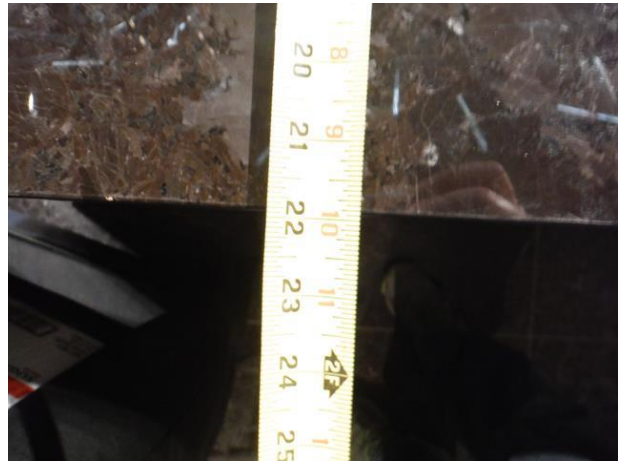
DSCF0380 (Copy)



DSCF0381 (Copy)



DSCF0382 (Copy)



DSCF0383 (Copy)



DSCF0384 (Copy)

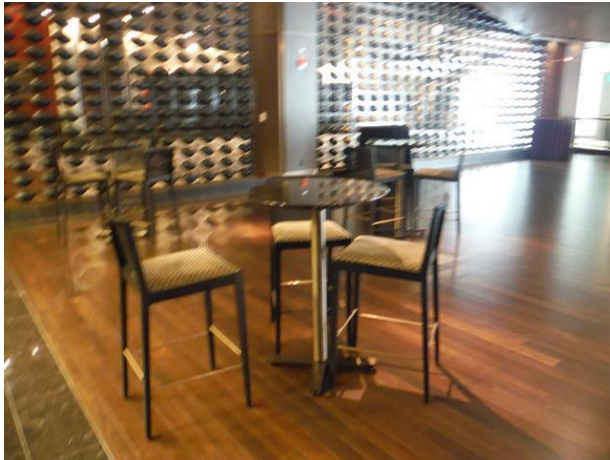


DSCF0385 (Copy)

Levi's Stadium Access Inspection

4900 Marie P DeBartolo Way, Santa Clara, California 95054

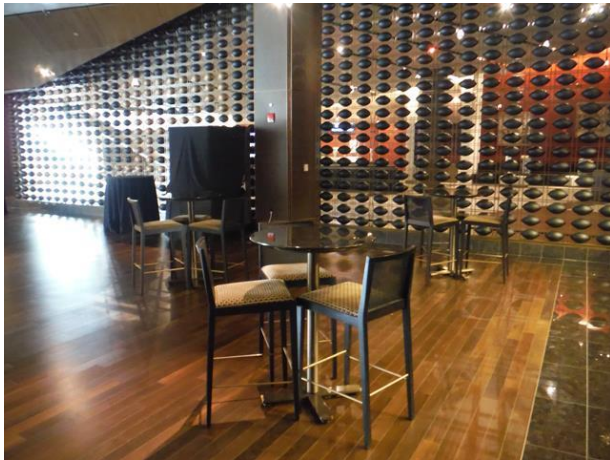
Survey Dates: January 24, 25 & 26, 2018



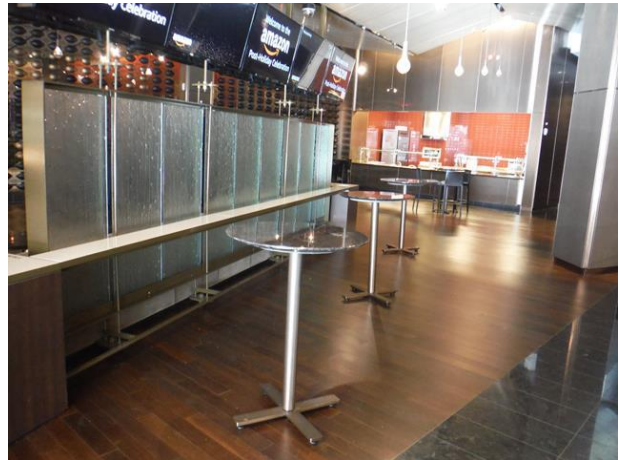
DSCF0386 (Copy)



DSCF0387 (Copy)



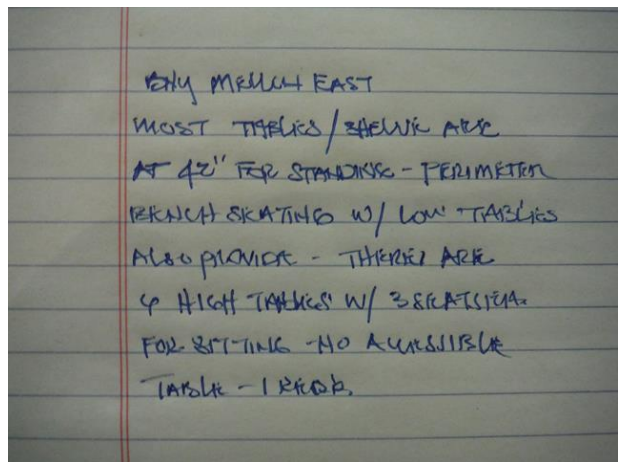
DSCF0390 (Copy)



DSCF0391 (Copy)



DSCF0392 (Copy)

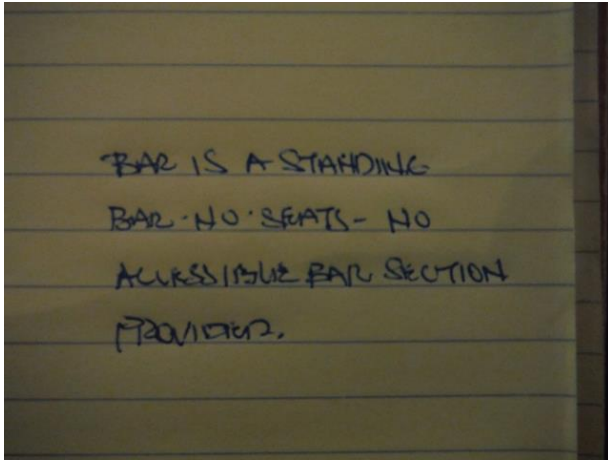


DSCF0393 (Copy)

Levi's Stadium Access Inspection

4900 Marie P DeBartolo Way, Santa Clara, California 95054

Survey Dates: January 24, 25 & 26, 2018



DSCF0394 (Copy)



DSCF0395 (Copy)



DSCF0396 (Copy)



DSCF0397 (Copy)



DSCF0398 (Copy)



DSCF0399 (Copy)

Levi's Stadium Access Inspection

4900 Marie P DeBartolo Way, Santa Clara, California 95954

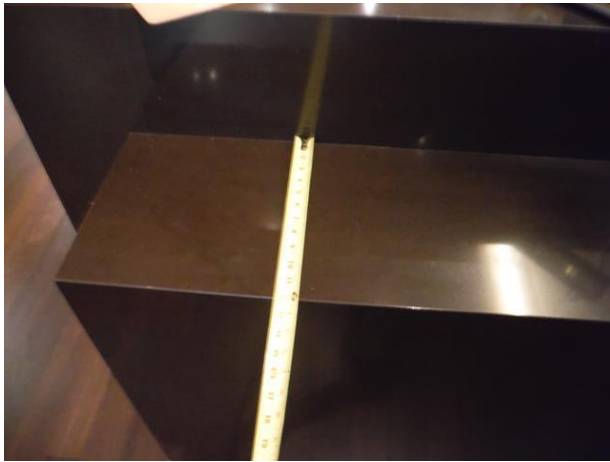
Survey Dates: January 24, 25 & 26, 2018



DSCF0400 (Copy)



DSCF0401 (Copy)



DSCF0402 (Copy)



DSCF0403 (Copy)



DSCF0404 (Copy)



DSCF0405 (Copy)

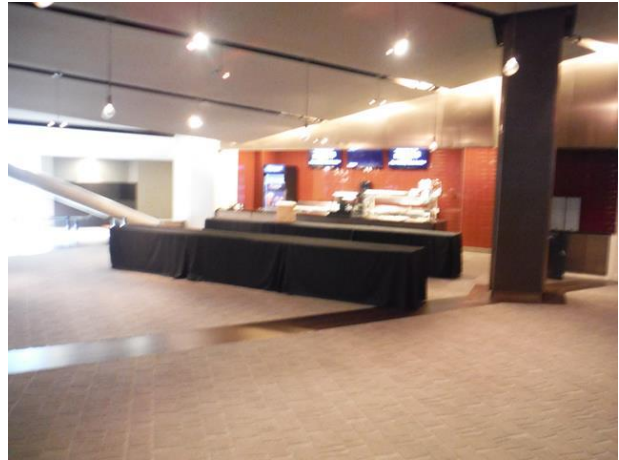
Levi's Stadium Access Inspection

4900 Marie P DeBartolo Way, Santa Clara, California 95054

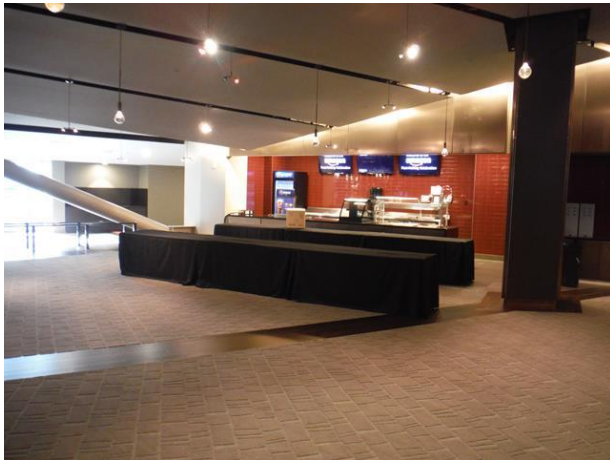
Survey Dates: January 24, 25 & 26, 2018



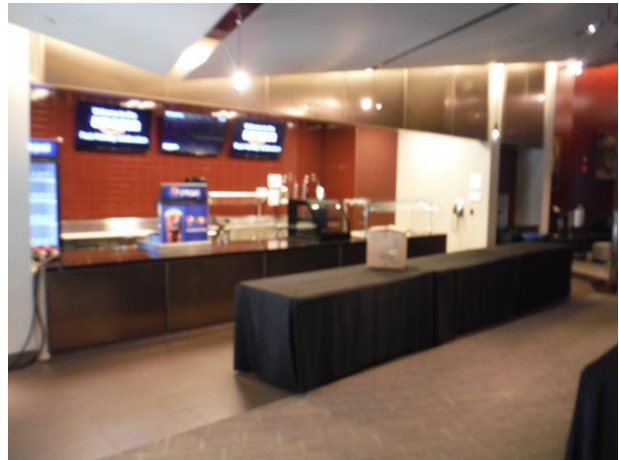
DSCF0406 (Copy)



DSCF0407 (Copy)



DSCF0408 (Copy)



DSCF0409 (Copy)



DSCF0411 (Copy)



DSCF0412 (Copy)

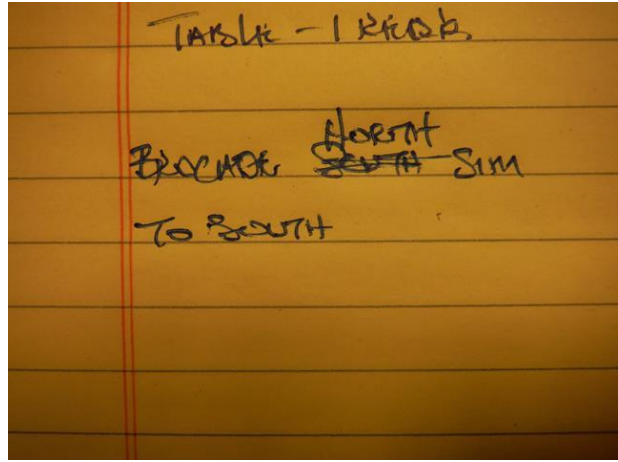
Levi's Stadium Access Inspection

4900 Marie P DeBartolo Way, Santa Clara, California 95954

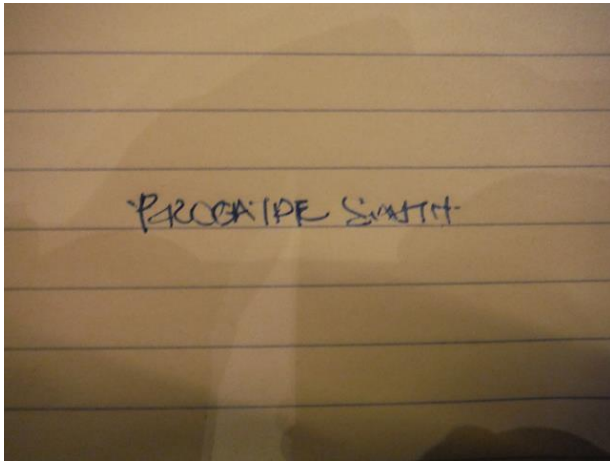
Survey Dates: January 24, 25 & 26, 2018



DSCF0413 (Copy)



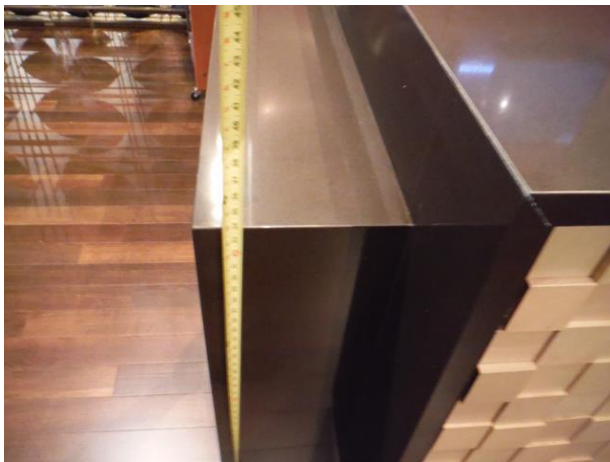
DSCF0414 (Copy)



DSCF0415 (Copy)



DSCF0416 (Copy)



DSCF0417 (Copy)



DSCF0418 (Copy)

Levi's Stadium Access Inspection

4900 Marie P DeBartolo Way, Santa Clara, California 95954

Survey Dates: January 24, 25 & 26, 2018



DSCF0419 (Copy)



DSCF0420 (Copy)



DSCF0421 (Copy)



DSCF0422 (Copy)



DSCF0423 (Copy)



DSCF0424 (Copy)

Levi's Stadium Access Inspection

4900 Marie P DeBartolo Way, Santa Clara, California 95954

Survey Dates: January 24, 25 & 26, 2018



DSCF0425 (Copy)



DSCF0426 (Copy)



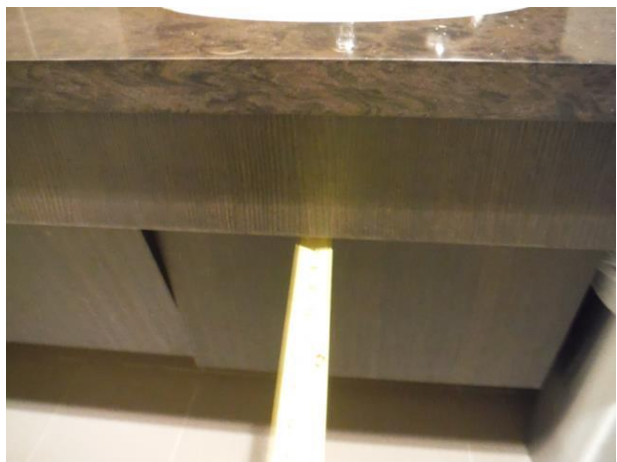
DSCF0428 (Copy)



DSCF0429 (Copy)



DSCF0430 (Copy)



DSCF0431 (Copy)

Levi's Stadium Access Inspection

4900 Marie P DeBartolo Way, Santa Clara, California 95954

Survey Dates: January 24, 25 & 26, 2018



DSCF0432 (Copy)



DSCF0433 (Copy)



DSCF0434 (Copy)



DSCF0435 (Copy)



DSCF0436 (Copy)



DSCF0437 (Copy)

Levi's Stadium Access Inspection

4900 Marie P DeBartolo Way, Santa Clara, California 95954

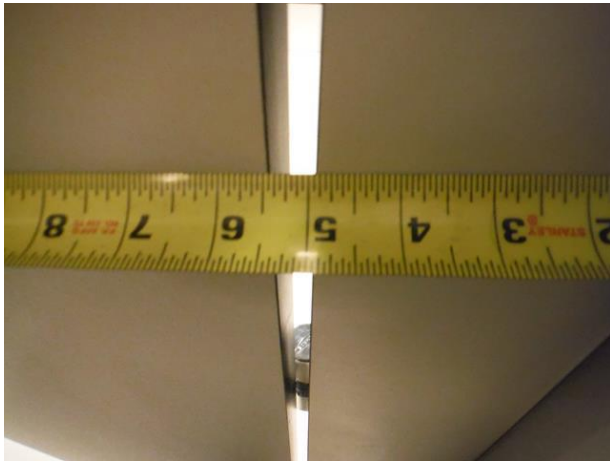
Survey Dates: January 24, 25 & 26, 2018



DSCF0438 (Copy)



DSCF0439 (Copy)



DSCF0440 (Copy)



DSCF0441 (Copy)



DSCF0442 (Copy)



DSCF0443 (Copy)

Levi's Stadium Access Inspection

4900 Marie P DeBartolo Way, Santa Clara, California 95954

Survey Dates: January 24, 25 & 26, 2018



DSCF0444 (Copy)



DSCF0445 (Copy)



DSCF0446 (Copy)



DSCF0447 (Copy)



DSCF0448 (Copy)



DSCF0449 (Copy)

Levi's Stadium Access Inspection

4900 Marie P DeBartolo Way, Santa Clara, California 95954

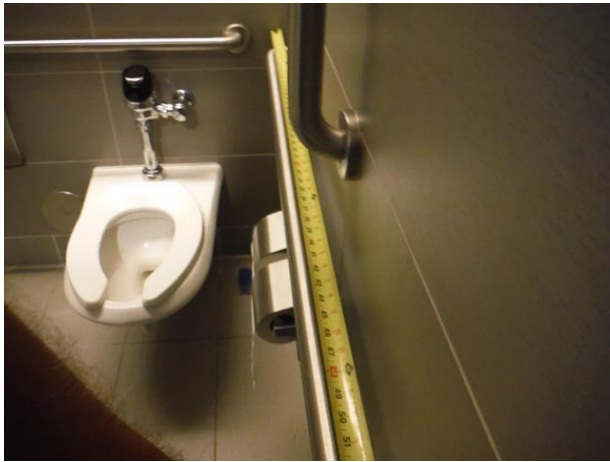
Survey Dates: January 24, 25 & 26, 2018



DSCF0450 (Copy)



DSCF0451 (Copy)



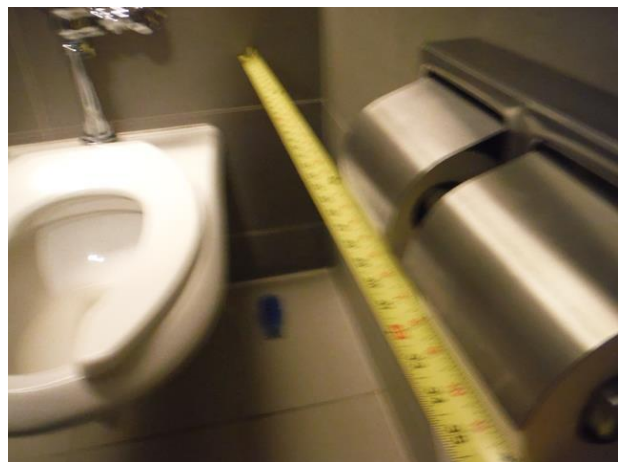
DSCF0452 (Copy)



DSCF0453 (Copy)



DSCF0454 (Copy)



DSCF0455 (Copy)

Levi's Stadium Access Inspection

4900 Marie P DeBartolo Way, Santa Clara, California 95954

Survey Dates: January 24, 25 & 26, 2018



DSCF0456 (Copy)



DSCF0457 (Copy)



DSCF0458 (Copy)



DSCF0459 (Copy)



DSCF0460 (Copy)



DSCF0461 (Copy)

Levi's Stadium Access Inspection

4900 Marie P DeBartolo Way, Santa Clara, California 95954

Survey Dates: January 24, 25 & 26, 2018



DSCF0462 (Copy)



DSCF0463 (Copy)



DSCF0464 (Copy)



DSCF0465 (Copy)



DSCF0466 (Copy)



DSCF0467 (Copy)

Levi's Stadium Access Inspection

4900 Marie P DeBartolo Way, Santa Clara, California 95954

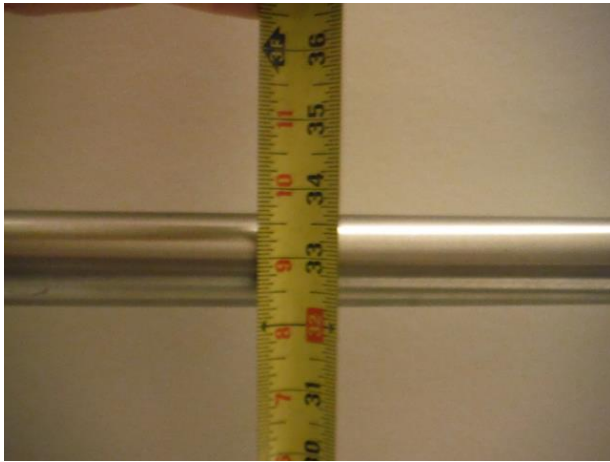
Survey Dates: January 24, 25 & 26, 2018



DSCF0468 (Copy)



DSCF0469 (Copy)



DSCF0471 (Copy)



DSCF0472 (Copy)



DSCF0473 (Copy)



DSCF0474 (Copy)

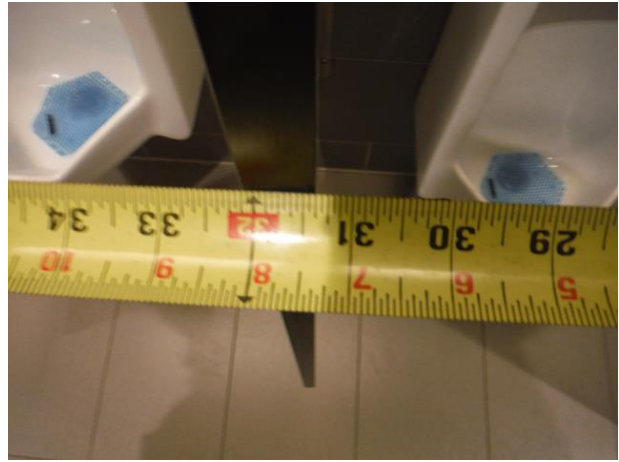
Levi's Stadium Access Inspection

4900 Marie P DeBartolo Way, Santa Clara, California 95954

Survey Dates: January 24, 25 & 26, 2018



DSCF0475 (Copy)



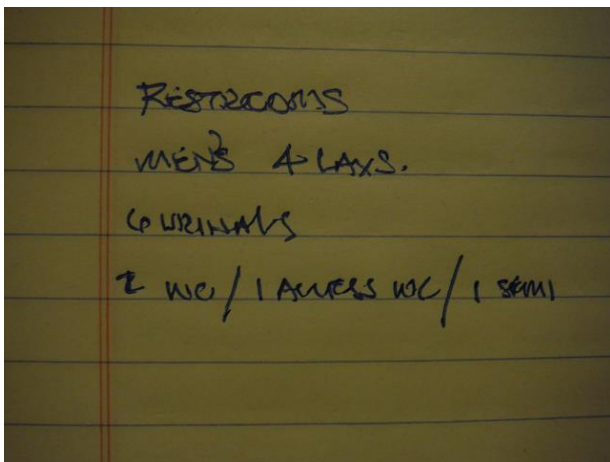
DSCF0476 (Copy)



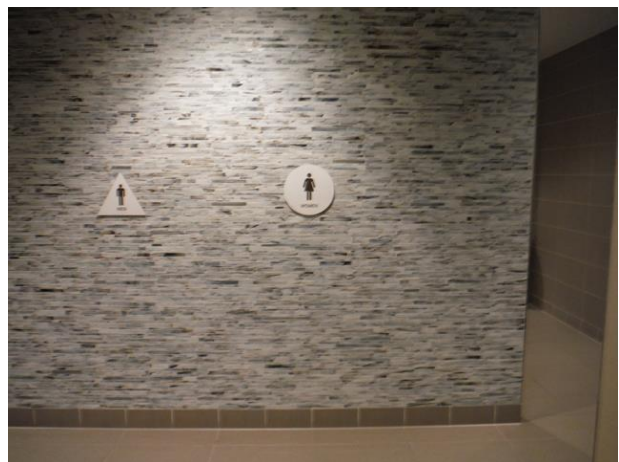
DSCF0477 (Copy)



DSCF0478 (Copy)



DSCF0479 (Copy)



DSCF0480 (Copy)

Levi's Stadium Access Inspection

4900 Marie P DeBartolo Way, Santa Clara, California 95954

Survey Dates: January 24, 25 & 26, 2018



DSCF0481 (Copy)



DSCF0482 (Copy)



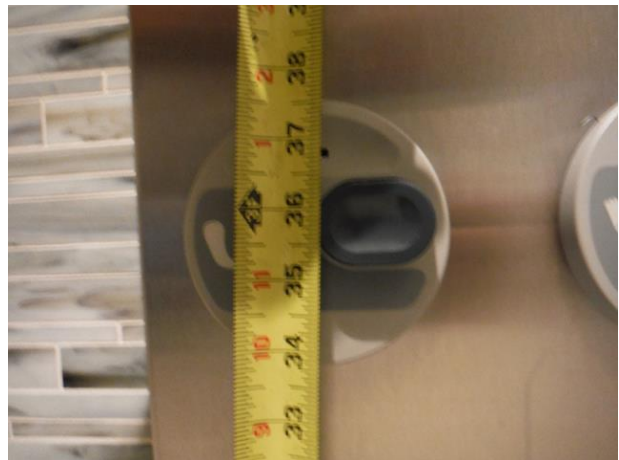
DSCF0484 (Copy)



DSCF0485 (Copy)



DSCF0486 (Copy)



DSCF0487 (Copy)

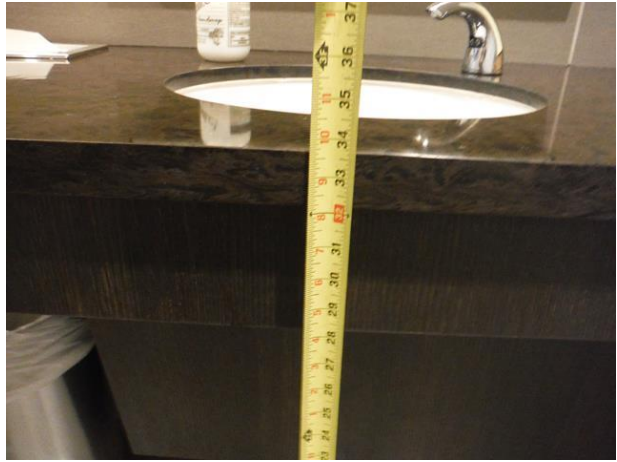
Levi's Stadium Access Inspection

4900 Marie P DeBartolo Way, Santa Clara, California 95954

Survey Dates: January 24, 25 & 26, 2018



DSCF0488 (Copy)



DSCF0489 (Copy)



DSCF0490 (Copy)



DSCF0491 (Copy)



DSCF0492 (Copy)



DSCF0493 (Copy)

Levi's Stadium Access Inspection

4900 Marie P DeBartolo Way, Santa Clara, California 95954

Survey Dates: January 24, 25 & 26, 2018



DSCF0494 (Copy)



DSCF0495 (Copy)



DSCF0496 (Copy)



DSCF0497 (Copy)



DSCF0498 (Copy)



DSCF0499 (Copy)

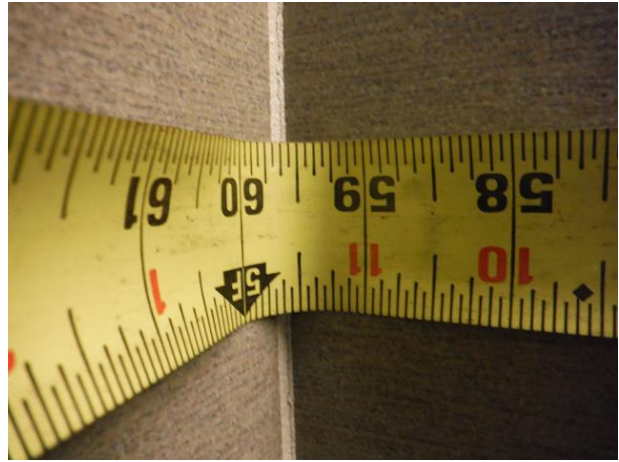
Levi's Stadium Access Inspection

4900 Marie P DeBartolo Way, Santa Clara, California 95954

Survey Dates: January 24, 25 & 26, 2018



DSCF0500 (Copy)



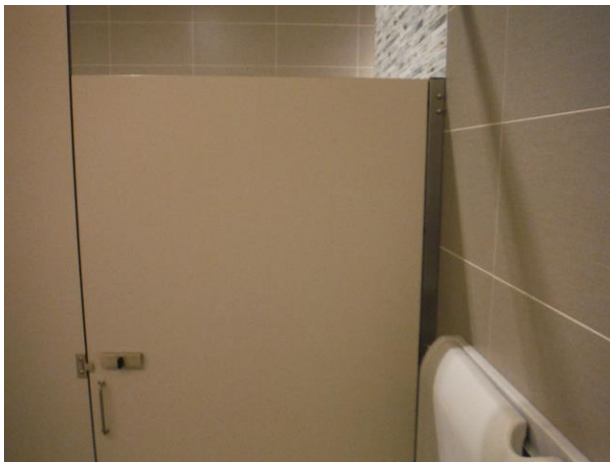
DSCF0501 (Copy)



DSCF0503 (Copy)



DSCF0504 (Copy)



DSCF0505 (Copy)



DSCF0506 (Copy)

Levi's Stadium Access Inspection

4900 Marie P DeBartolo Way, Santa Clara, California 95954

Survey Dates: January 24, 25 & 26, 2018



DSCF0507 (Copy)



DSCF0508 (Copy)



DSCF0509 (Copy)



DSCF0510 (Copy)



DSCF0511 (Copy)



DSCF0512 (Copy)

Levi's Stadium Access Inspection

4900 Marie P DeBartolo Way, Santa Clara, California 95954

Survey Dates: January 24, 25 & 26, 2018



DSCF0513 (Copy)



DSCF0514 (Copy)



DSCF0515 (Copy)



DSCF0516 (Copy)



DSCF0517 (Copy)



DSCF0518 (Copy)

Levi's Stadium Access Inspection

4900 Marie P DeBartolo Way, Santa Clara, California 95954

Survey Dates: January 24, 25 & 26, 2018



DSCF0519 (Copy)



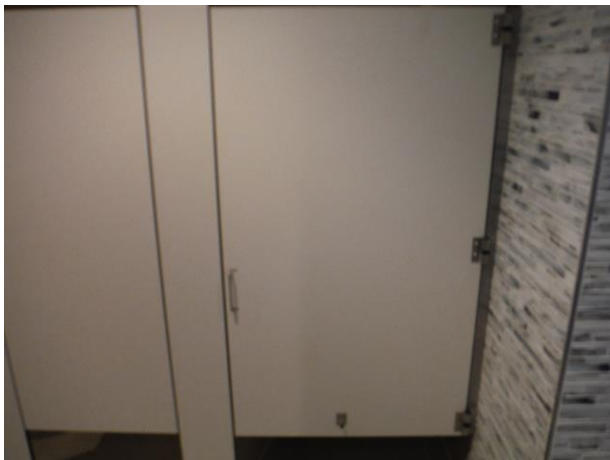
DSCF0521 (Copy)



DSCF0522 (Copy)



DSCF0523 (Copy)



DSCF0524 (Copy)



DSCF0525 (Copy)

Levi's Stadium Access Inspection

4900 Marie P DeBartolo Way, Santa Clara, California 95954

Survey Dates: January 24, 25 & 26, 2018



DSCF0526 (Copy)



DSCF0527 (Copy)



DSCF0529 (Copy)



DSCF0530 (Copy)



DSCF0531 (Copy)



DSCF0532 (Copy)

Levi's Stadium Access Inspection

4900 Marie P DeBartolo Way, Santa Clara, California 95954

Survey Dates: January 24, 25 & 26, 2018



DSCF0533 (Copy)



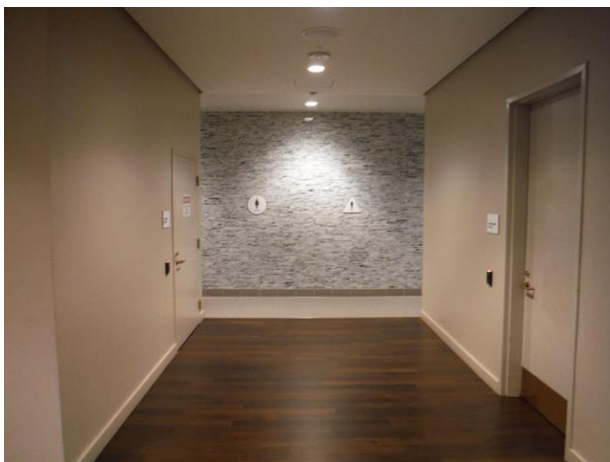
DSCF0534 (Copy)



DSCF0535 (Copy)



DSCF0536 (Copy)



DSCF0537 (Copy)



DSCF0538 (Copy)

Levi's Stadium Access Inspection

4900 Marie P DeBartolo Way, Santa Clara, California 95954

Survey Dates: January 24, 25 & 26, 2018



DSCF0539 (Copy)



DSCF0540 (Copy)



DSCF0541 (Copy)



DSCF0542 (Copy)



DSCF0543 (Copy)

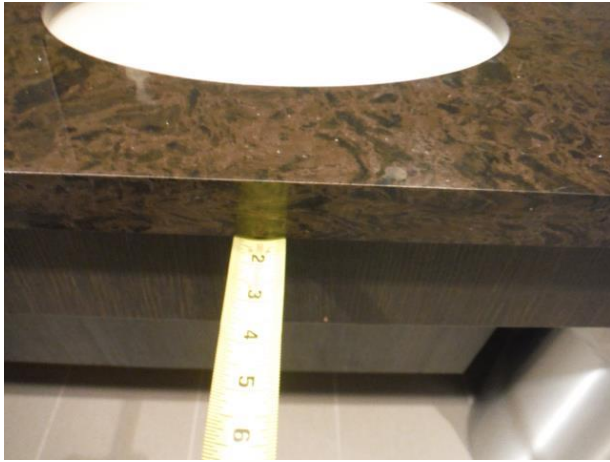


DSCF0544 (Copy)

Levi's Stadium Access Inspection

4900 Marie P DeBartolo Way, Santa Clara, California 95954

Survey Dates: January 24, 25 & 26, 2018



DSCF0545 (Copy)



DSCF0546 (Copy)



DSCF0547 (Copy)



DSCF0549 (Copy)



DSCF0550 (Copy)



DSCF0551 (Copy)

Levi's Stadium Access Inspection

4900 Marie P DeBartolo Way, Santa Clara, California 95954

Survey Dates: January 24, 25 & 26, 2018



DSCF0552 (Copy)



DSCF0553 (Copy)



DSCF0554 (Copy)



DSCF0555 (Copy)



DSCF0556 (Copy)



DSCF0557 (Copy)

Levi's Stadium Access Inspection

4900 Marie P DeBartolo Way, Santa Clara, California 95954

Survey Dates: January 24, 25 & 26, 2018



DSCF0558 (Copy)



DSCF0559 (Copy)



DSCF0560 (Copy)



DSCF0561 (Copy)



DSCF0562 (Copy)



DSCF0563 (Copy)

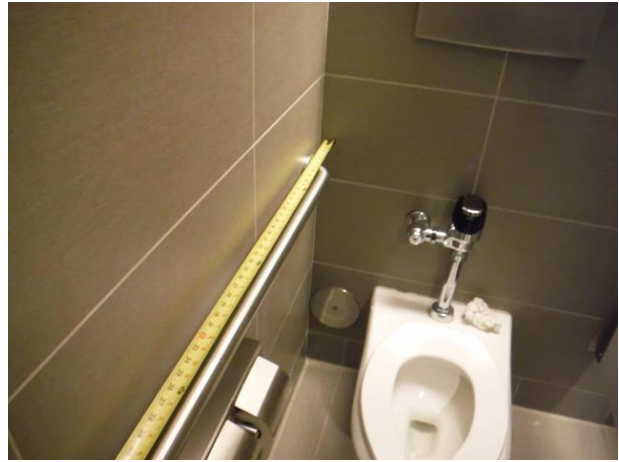
Levi's Stadium Access Inspection

4900 Marie P DeBartolo Way, Santa Clara, California 95954

Survey Dates: January 24, 25 & 26, 2018



DSCF0564 (Copy)



DSCF0565 (Copy)



DSCF0566 (Copy)



DSCF0567 (Copy)



DSCF0568 (Copy)



DSCF0569 (Copy)

Levi's Stadium Access Inspection

4900 Marie P DeBartolo Way, Santa Clara, California 95954

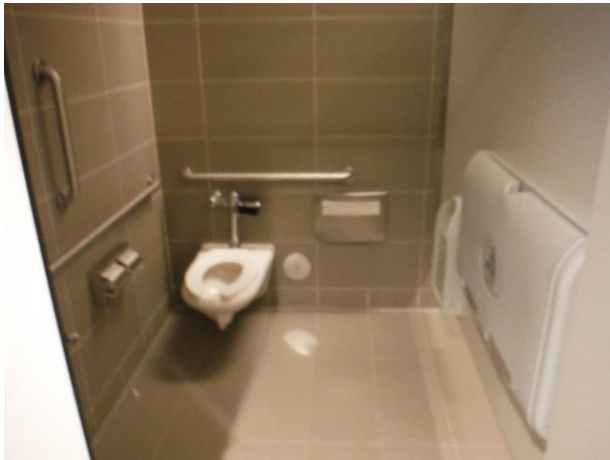
Survey Dates: January 24, 25 & 26, 2018



DSCF0570 (Copy)



DSCF0571 (Copy)



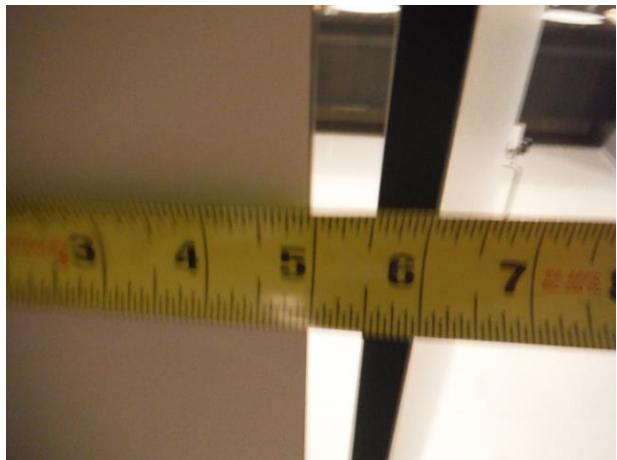
DSCF0572 (Copy)



DSCF0573 (Copy)



DSCF0574 (Copy)



DSCF0575 (Copy)

Levi's Stadium Access Inspection

4900 Marie P DeBartolo Way, Santa Clara, California 95954

Survey Dates: January 24, 25 & 26, 2018



DSCF0576 (Copy)



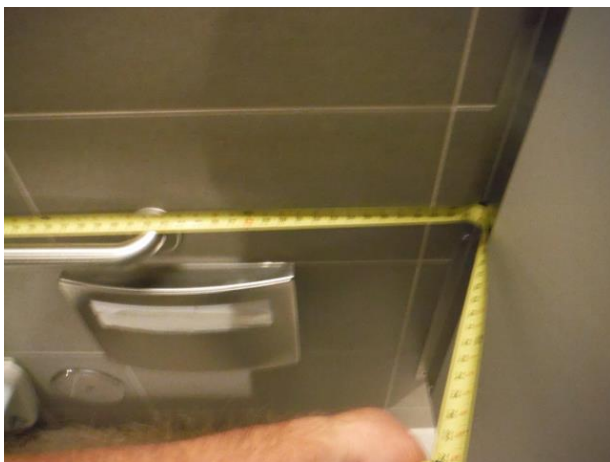
DSCF0577 (Copy)



DSCF0578 (Copy)



DSCF0579 (Copy)



DSCF0580 (Copy)



DSCF0581 (Copy)

Levi's Stadium Access Inspection

4900 Marie P DeBartolo Way, Santa Clara, California 95954

Survey Dates: January 24, 25 & 26, 2018



DSCF0582 (Copy)



DSCF0583 (Copy)



DSCF0584 (Copy)



DSCF0585 (Copy)



DSCF0586 (Copy)



DSCF0587 (Copy)

Levi's Stadium Access Inspection

4900 Marie P DeBartolo Way, Santa Clara, California 95954

Survey Dates: January 24, 25 & 26, 2018



DSCF0588 (Copy)



DSCF0589 (Copy)



DSCF0590 (Copy)



DSCF0591 (Copy)



DSCF0592 (Copy)



DSCF0593 (Copy)

Levi's Stadium Access Inspection

4900 Marie P DeBartolo Way, Santa Clara, California 95954

Survey Dates: January 24, 25 & 26, 2018



DSCF0594 (Copy)



DSCF0595 (Copy)



DSCF0596 (Copy)



DSCF0597 (Copy)



DSCF0598 (Copy)



DSCF0599 (Copy)

Levi's Stadium Access Inspection

4900 Marie P DeBartolo Way, Santa Clara, California 95954

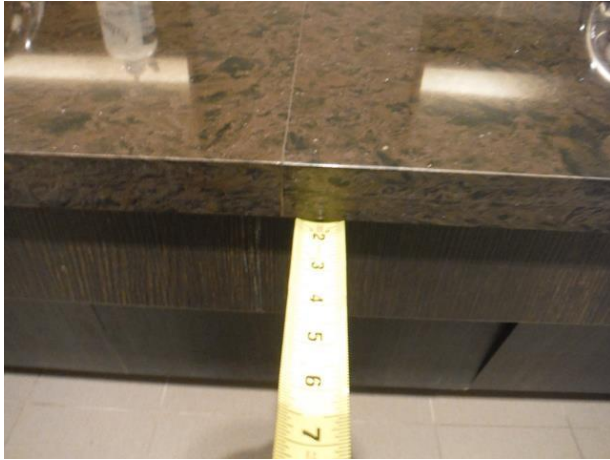
Survey Dates: January 24, 25 & 26, 2018



DSCF0600 (Copy)



DSCF0601 (Copy)



DSCF0602 (Copy)



DSCF0603 (Copy)



DSCF0604 (Copy)



DSCF0605 (Copy)

Levi's Stadium Access Inspection

4900 Marie P DeBartolo Way, Santa Clara, California 95954

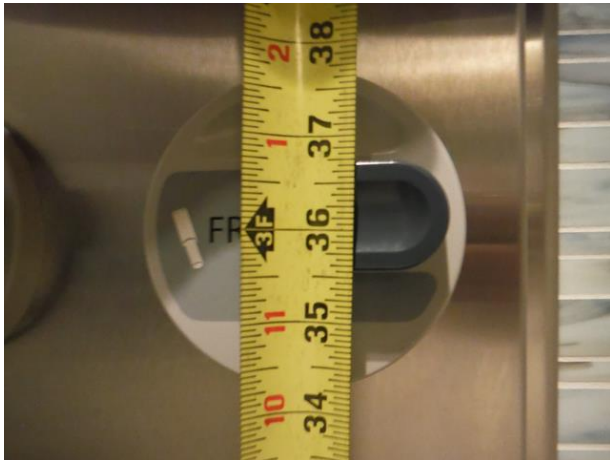
Survey Dates: January 24, 25 & 26, 2018



DSCF0606 (Copy)



DSCF0607 (Copy)



DSCF0608 (Copy)



DSCF0609 (Copy)



DSCF0611 (Copy)



DSCF0612 (Copy)

Levi's Stadium Access Inspection

4900 Marie P DeBartolo Way, Santa Clara, California 95954

Survey Dates: January 24, 25 & 26, 2018



DSCF0613 (Copy)



DSCF0614 (Copy)



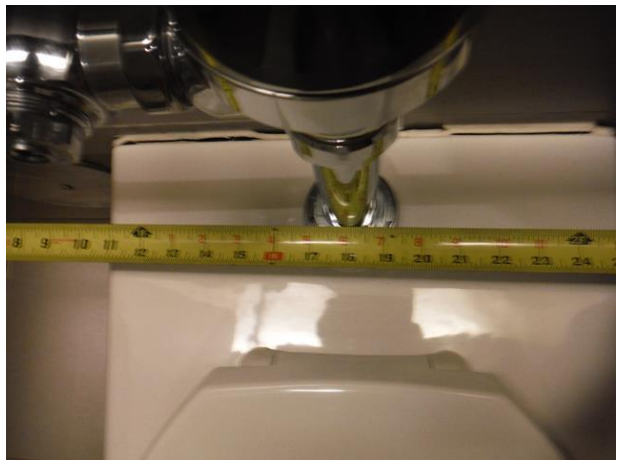
DSCF0615 (Copy)



DSCF0616 (Copy)



DSCF0617 (Copy)



DSCF0618 (Copy)

Levi's Stadium Access Inspection

4900 Marie P DeBartolo Way, Santa Clara, California 95954

Survey Dates: January 24, 25 & 26, 2018



DSCF0619 (Copy)



DSCF0620 (Copy)



DSCF0621 (Copy)



DSCF0622 (Copy)



DSCF0623 (Copy)



DSCF0624 (Copy)

Levi's Stadium Access Inspection

4900 Marie P DeBartolo Way, Santa Clara, California 95954

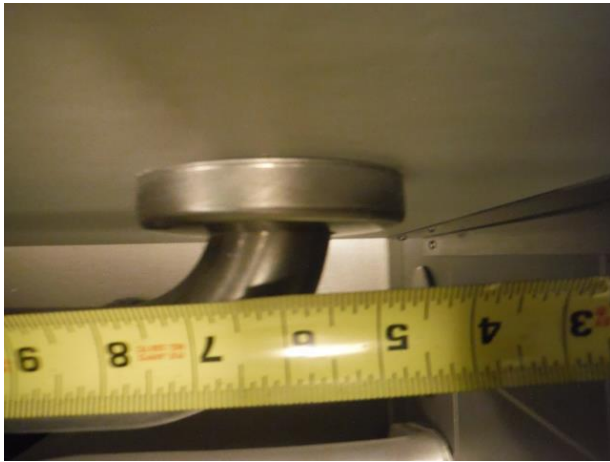
Survey Dates: January 24, 25 & 26, 2018



DSCF0625 (Copy)



DSCF0626 (Copy)



DSCF0627 (Copy)



DSCF0628 (Copy)



DSCF0630 (Copy)



DSCF0631 (Copy)

Levi's Stadium Access Inspection

4900 Marie P DeBartolo Way, Santa Clara, California 95954

Survey Dates: January 24, 25 & 26, 2018



DSCF0632 (Copy)



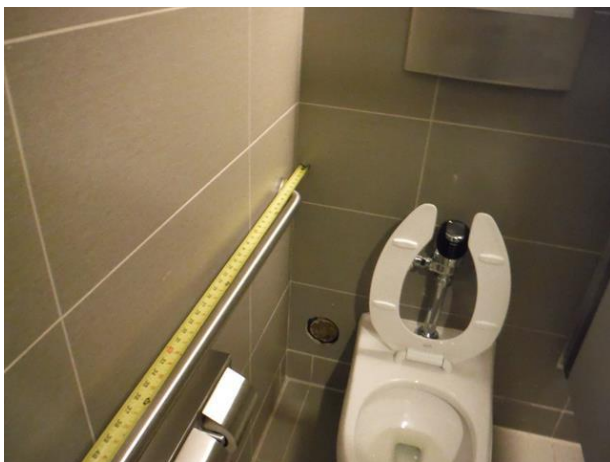
DSCF0633 (Copy)



DSCF0634 (Copy)



DSCF0635 (Copy)



DSCF0636 (Copy)



DSCF0637 (Copy)

Levi's Stadium Access Inspection

4900 Marie P DeBartolo Way, Santa Clara, California 95954

Survey Dates: January 24, 25 & 26, 2018



DSCF0638 (Copy)



DSCF0639 (Copy)



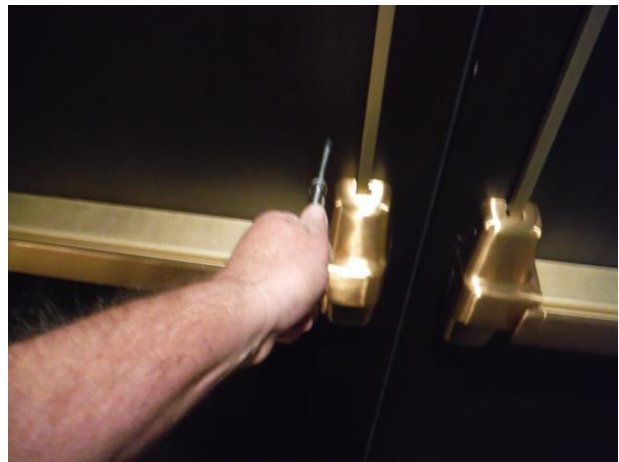
DSCF0640 (Copy)



DSCF0641 (Copy)



DSCF0642 (Copy)



DSCF0643 (Copy)

Levi's Stadium Access Inspection

4900 Marie P DeBartolo Way, Santa Clara, California 95954

Survey Dates: January 24, 25 & 26, 2018



DSCF0645 (Copy)



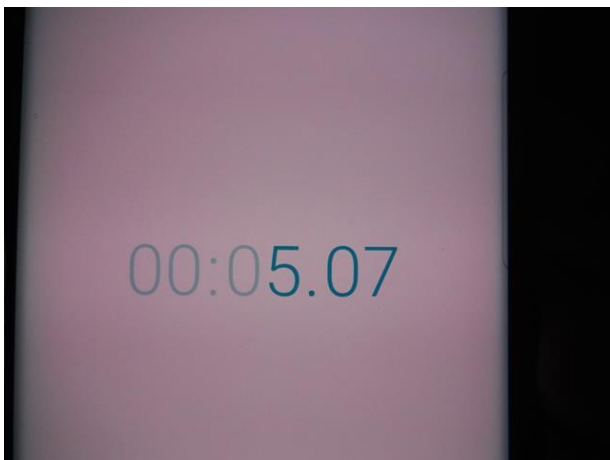
DSCF0646 (Copy)



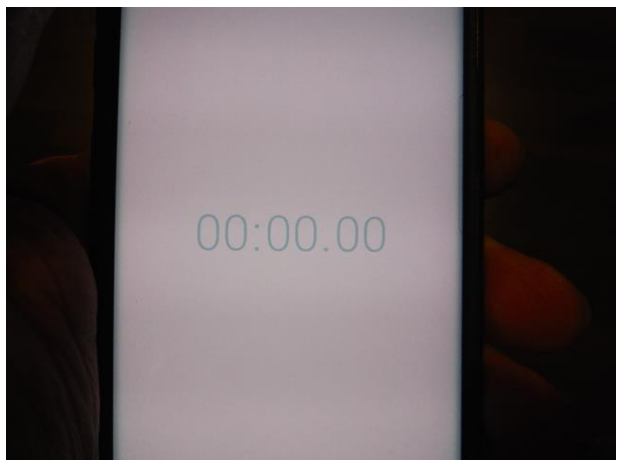
DSCF0647 (Copy)



DSCF0648 (Copy)



DSCF0649 (Copy)



DSCF0650 (Copy)

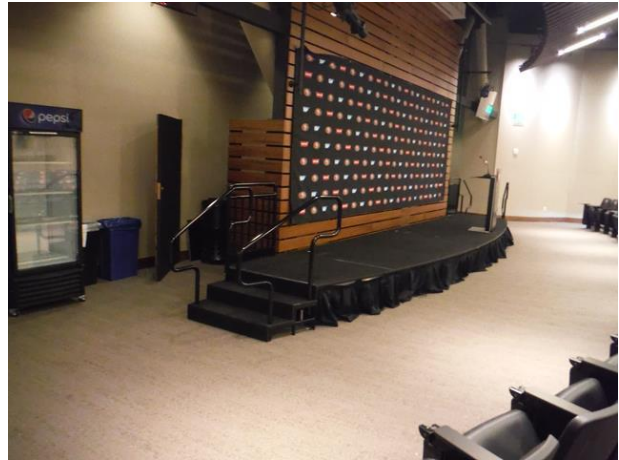
Levi's Stadium Access Inspection

4900 Marie P DeBartolo Way, Santa Clara, California 95954

Survey Dates: January 24, 25 & 26, 2018



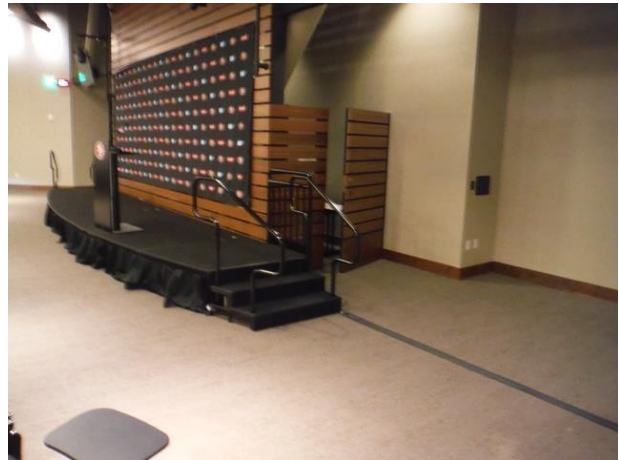
DSCF0651 (Copy)



DSCF0652 (Copy)



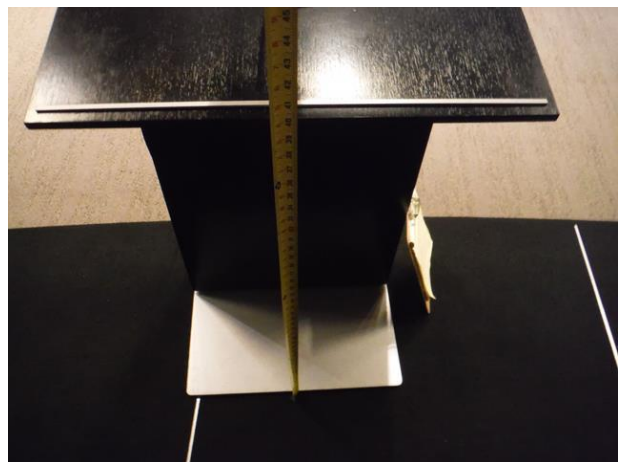
DSCF0653 (Copy)



DSCF0654 (Copy)



DSCF0655 (Copy)



DSCF0656 (Copy)

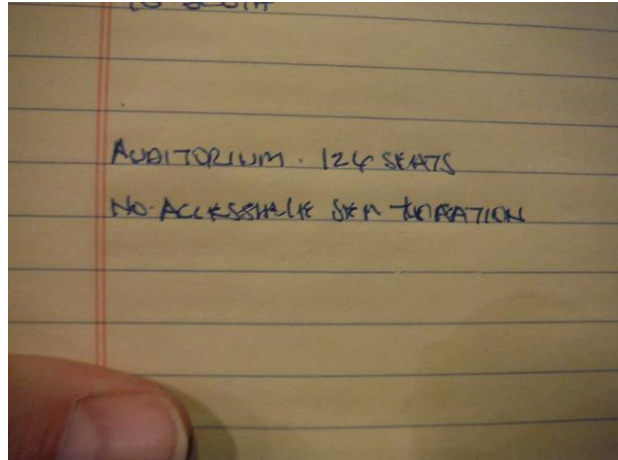
Levi's Stadium Access Inspection

4900 Marie P DeBartolo Way, Santa Clara, California 95954

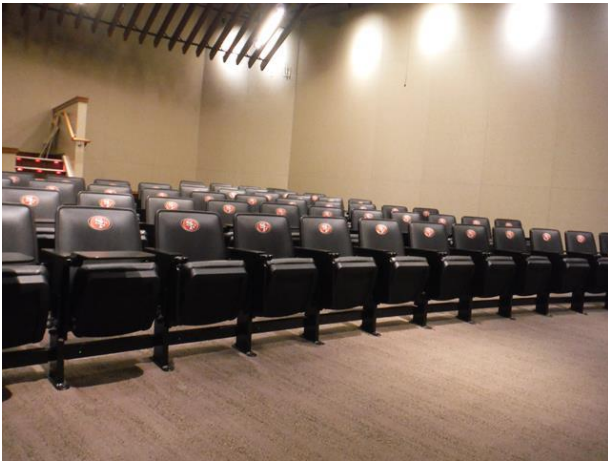
Survey Dates: January 24, 25 & 26, 2018



DSCF0657 (Copy)



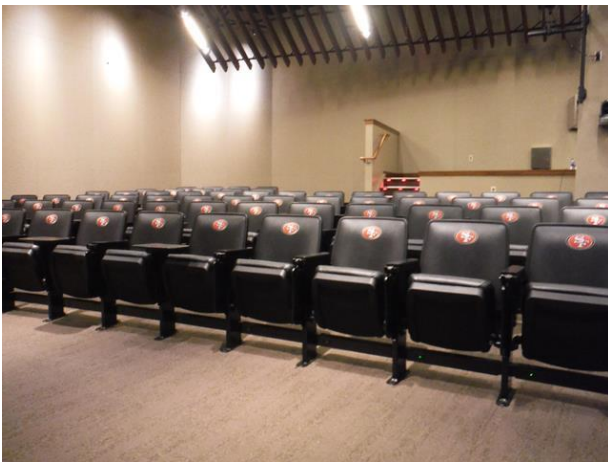
DSCF0658 (Copy)



DSCF0659 (Copy)



DSCF0660 (Copy)



DSCF0661 (Copy)



DSCF0662 (Copy)

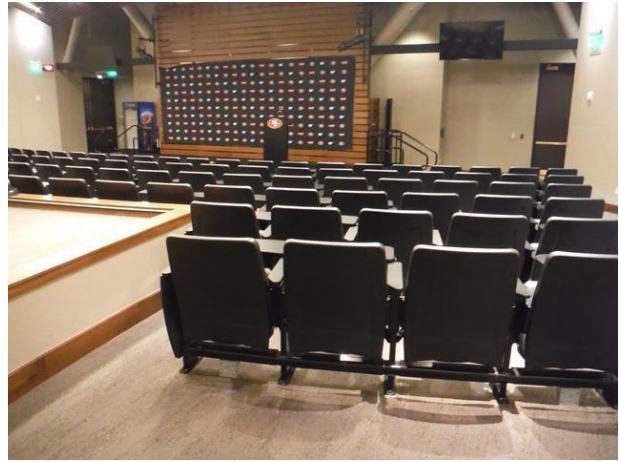
Levi's Stadium Access Inspection

4900 Marie P DeBartolo Way, Santa Clara, California 95954

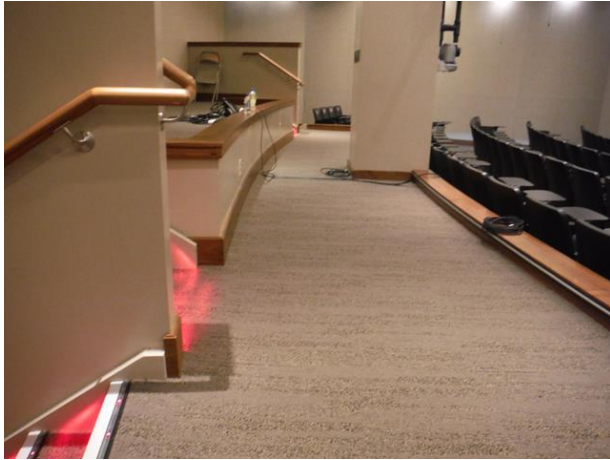
Survey Dates: January 24, 25 & 26, 2018



DSCF0663 (Copy)



DSCF0664 (Copy)



DSCF0665 (Copy)



DSCF0666 (Copy)



DSCF0667 (Copy)



DSCF0668 (Copy)

Levi's Stadium Access Inspection

4900 Marie P DeBartolo Way, Santa Clara, California 95954

Survey Dates: January 24, 25 & 26, 2018



DSCF0669 (Copy)



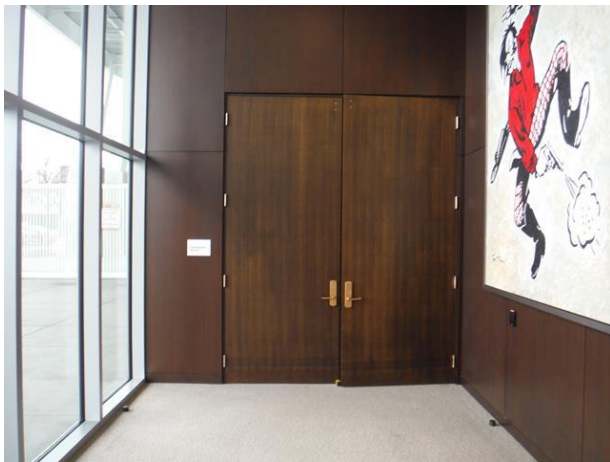
DSCF0670 (Copy)



DSCF0671 (Copy)



DSCF0672 (Copy)



DSCF0673 (Copy)



DSCF0674 (Copy)

Levi's Stadium Access Inspection

4900 Marie P DeBartolo Way, Santa Clara, California 95954

Survey Dates: January 24, 25 & 26, 2018



DSCF0675 (Copy)



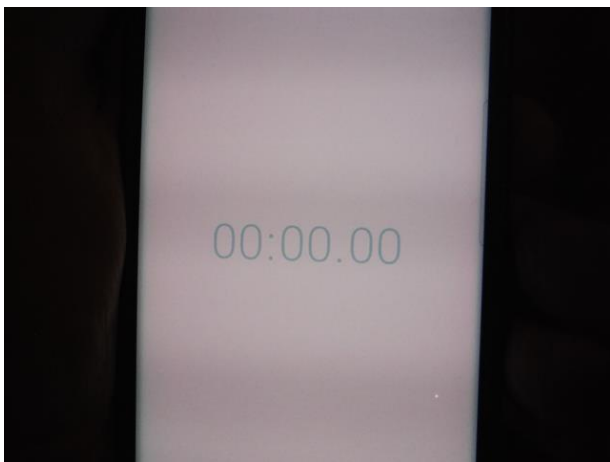
DSCF0677 (Copy)



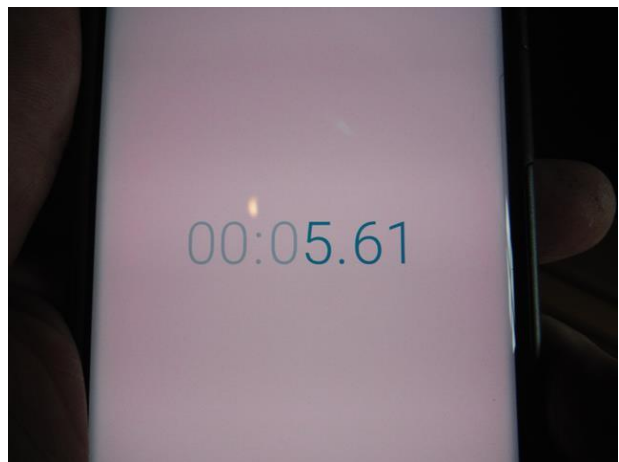
DSCF0678 (Copy)



DSCF0679 (Copy)



DSCF0680 (Copy)

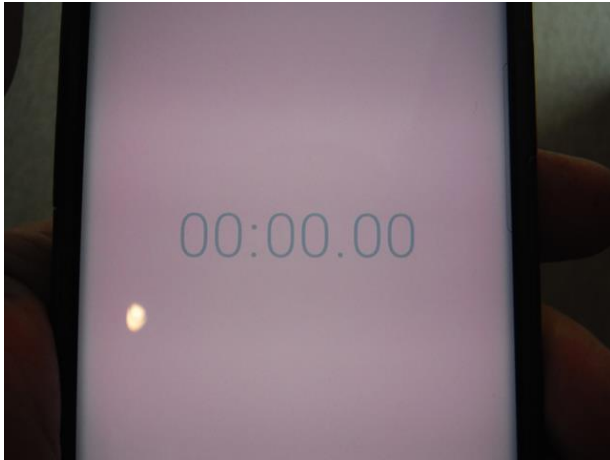


DSCF0681 (Copy)

Levi's Stadium Access Inspection

4900 Marie P DeBartolo Way, Santa Clara, California 95954

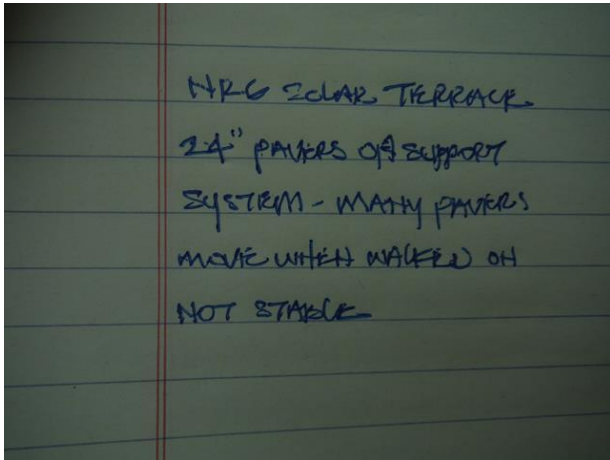
Survey Dates: January 24, 25 & 26, 2018



DSCF0682 (Copy)



DSCF0683 (Copy)



DSCF0684 (Copy)



DSCF0685 (Copy)



DSCF0686 (Copy)



DSCF0687 (Copy)

Levi's Stadium Access Inspection

4900 Marie P DeBartolo Way, Santa Clara, California 95954

Survey Dates: January 24, 25 & 26, 2018



DSCF0688 (Copy)



DSCF0689 (Copy)



DSCF0690 (Copy)



DSCF0691 (Copy)



DSCF0692 (Copy)



DSCF0693 (Copy)

Levi's Stadium Access Inspection

4900 Marie P DeBartolo Way, Santa Clara, California 95954

Survey Dates: January 24, 25 & 26, 2018



DSCF0694 (Copy)



DSCF0695 (Copy)



DSCF0696 (Copy)



DSCF0697 (Copy)



DSCF0698 (Copy)



DSCF0699 (Copy)

Levi's Stadium Access Inspection

4900 Marie P DeBartolo Way, Santa Clara, California 95954

Survey Dates: January 24, 25 & 26, 2018



DSCF0700 (Copy)



DSCF0701 (Copy)



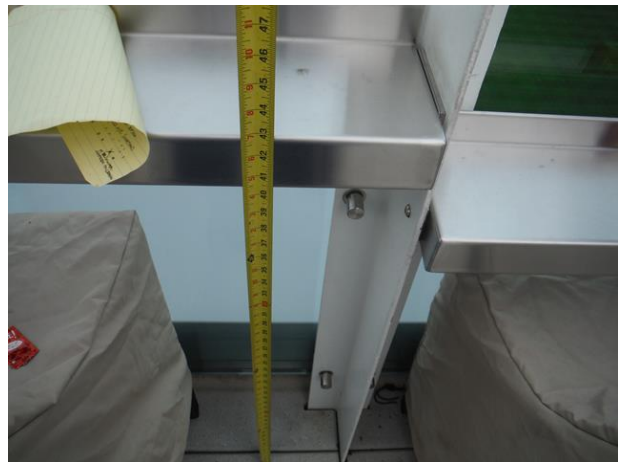
DSCF0702 (Copy)



DSCF0703 (Copy)



DSCF0704 (Copy)



DSCF0705 (Copy)

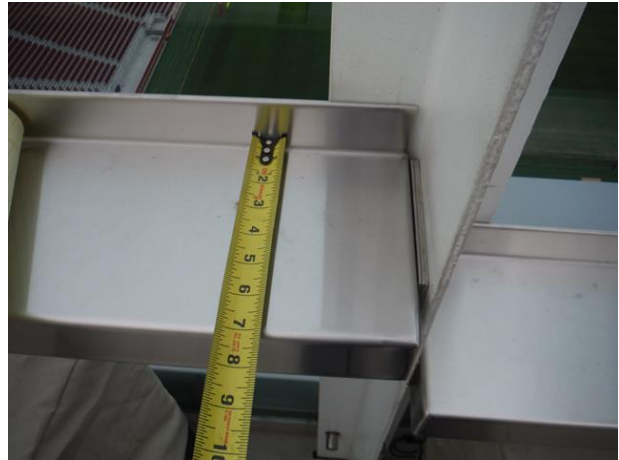
Levi's Stadium Access Inspection

4900 Marie P DeBartolo Way, Santa Clara, California 95954

Survey Dates: January 24, 25 & 26, 2018



DSCF0708 (Copy)



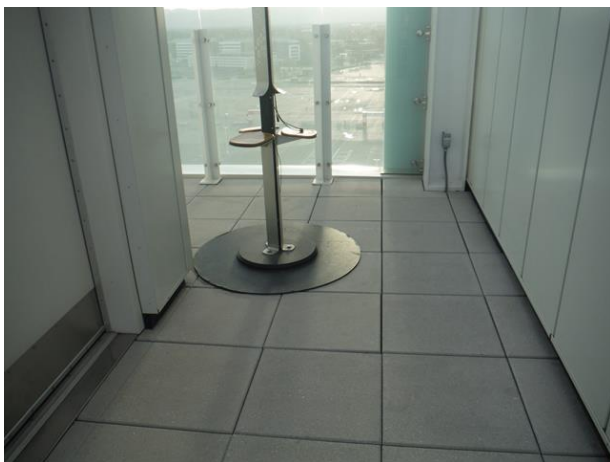
DSCF0709 (Copy)



DSCF0710 (Copy)



DSCF0711 (Copy)



DSCF0712 (Copy)



DSCF0713 (Copy)

Levi's Stadium Access Inspection

4900 Marie P DeBartolo Way, Santa Clara, California 95954

Survey Dates: January 24, 25 & 26, 2018



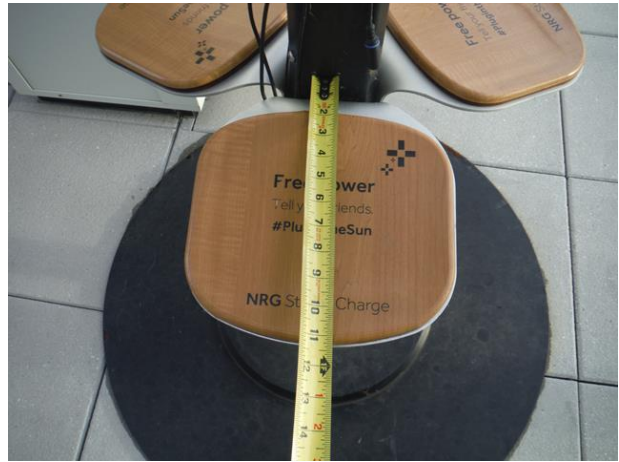
DSCF0714 (Copy)



DSCF0715 (Copy)



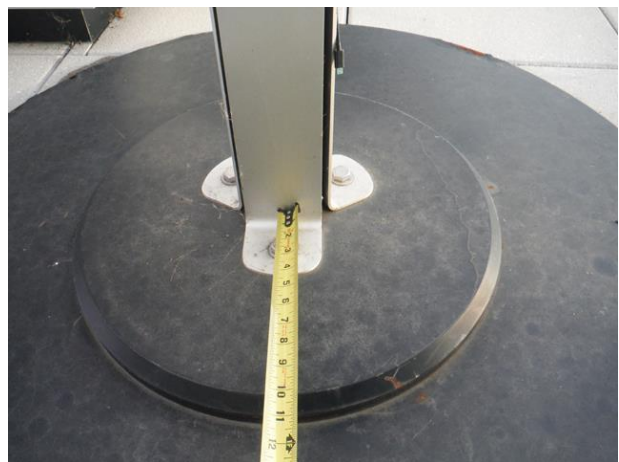
DSCF0716 (Copy)



DSCF0717 (Copy)



DSCF0718 (Copy)



DSCF0719 (Copy)

Levi's Stadium Access Inspection

4900 Marie P DeBartolo Way, Santa Clara, California 95954

Survey Dates: January 24, 25 & 26, 2018



DSCF0720 (Copy)



DSCF0721 (Copy)



DSCF0722 (Copy)



DSCF0723 (Copy)



DSCF0724 (Copy)



DSCF0725 (Copy)

Levi's Stadium Access Inspection

4900 Marie P DeBartolo Way, Santa Clara, California 95954

Survey Dates: January 24, 25 & 26, 2018



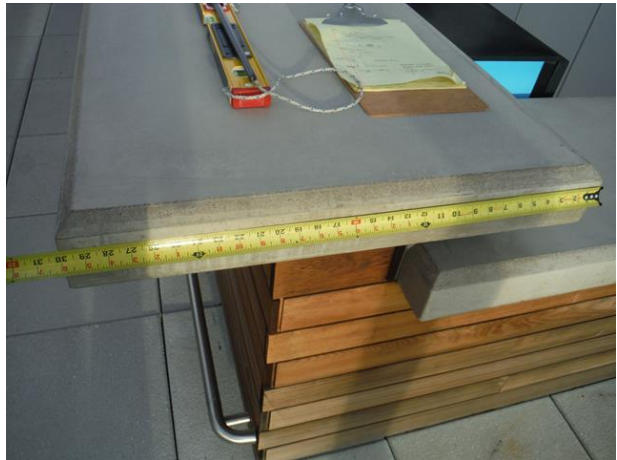
DSCF0726 (Copy)



DSCF0727 (Copy)



DSCF0728 (Copy)



DSCF0729 (Copy)



DSCF0730 (Copy)



DSCF0731 (Copy)

Levi's Stadium Access Inspection

4900 Marie P DeBartolo Way, Santa Clara, California 95954

Survey Dates: January 24, 25 & 26, 2018



DSCF0732 (Copy)



DSCF0733 (Copy)



DSCF0734 (Copy)



DSCF0735 (Copy)



DSCF0736 (Copy)



DSCF0737 (Copy)

Levi's Stadium Access Inspection

4900 Marie P DeBartolo Way, Santa Clara, California 95954

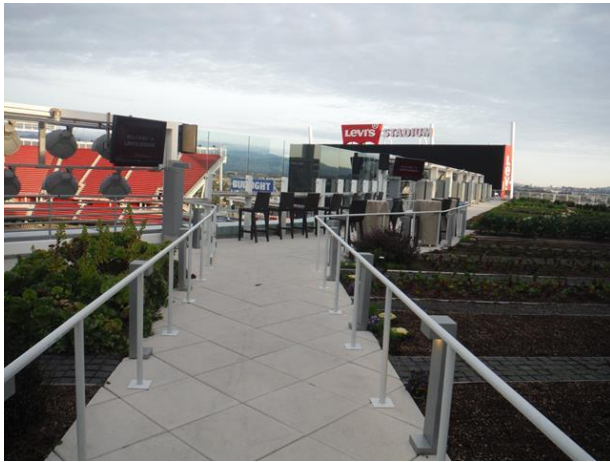
Survey Dates: January 24, 25 & 26, 2018



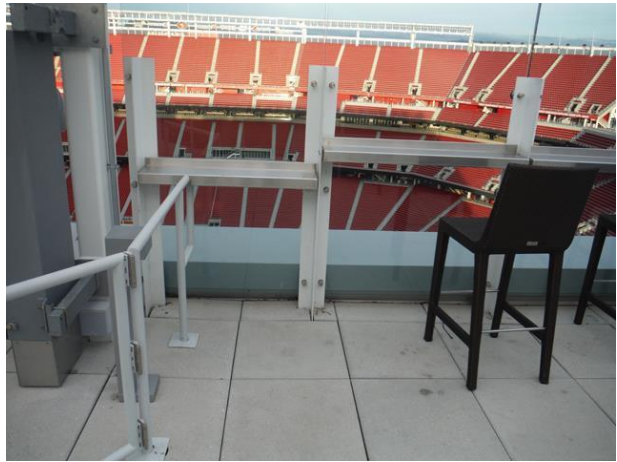
DSCF0738 (Copy)



DSCF0739 (Copy)



DSCF0740 (Copy)



DSCF0741 (Copy)



DSCF0742 (Copy)



DSCF0743 (Copy)

Levi's Stadium Access Inspection

4900 Marie P DeBartolo Way, Santa Clara, California 95954

Survey Dates: January 24, 25 & 26, 2018



DSCF0744 (Copy)



DSCF0745 (Copy)



DSCF0746 (Copy)



DSCF0747 (Copy)



DSCF0748 (Copy)



DSCF0749 (Copy)

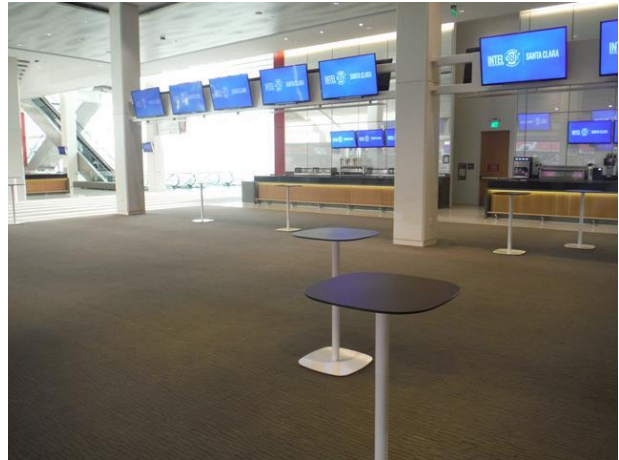
Levi's Stadium Access Inspection

4900 Marie P DeBartolo Way, Santa Clara, California 95954

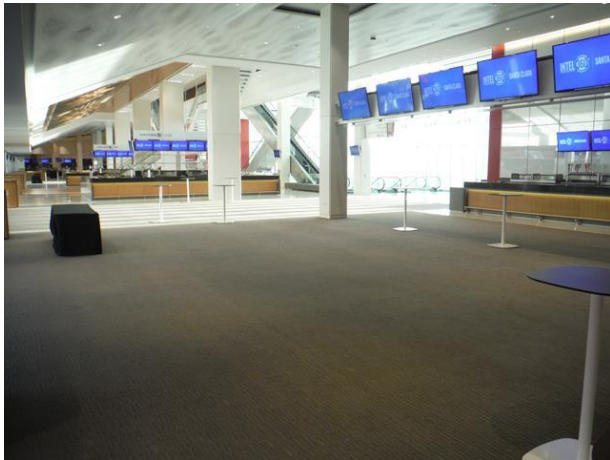
Survey Dates: January 24, 25 & 26, 2018



DSCF0750 (Copy)



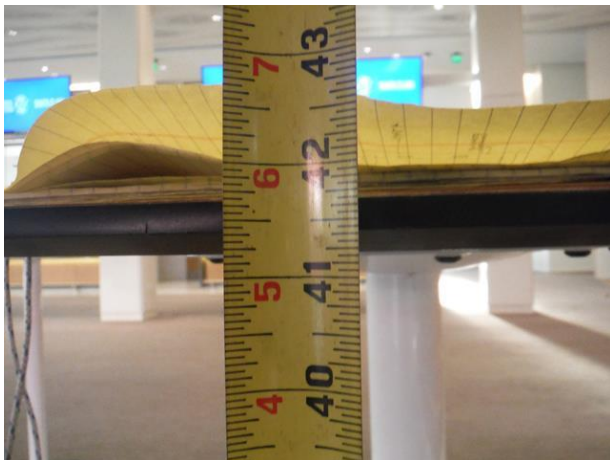
DSCF0751 (Copy)



DSCF0752 (Copy)



DSCF0753 (Copy)



DSCF0754 (Copy)



DSCF0755 (Copy)

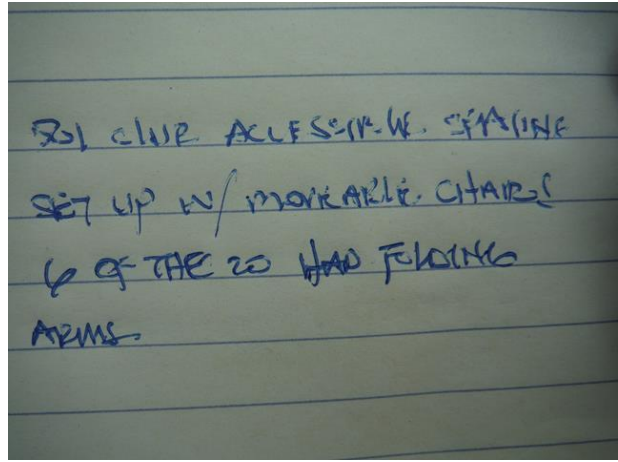
Levi's Stadium Access Inspection

4900 Marie P DeBartolo Way, Santa Clara, California 95954

Survey Dates: January 24, 25 & 26, 2018



DSCF0756 (Copy)



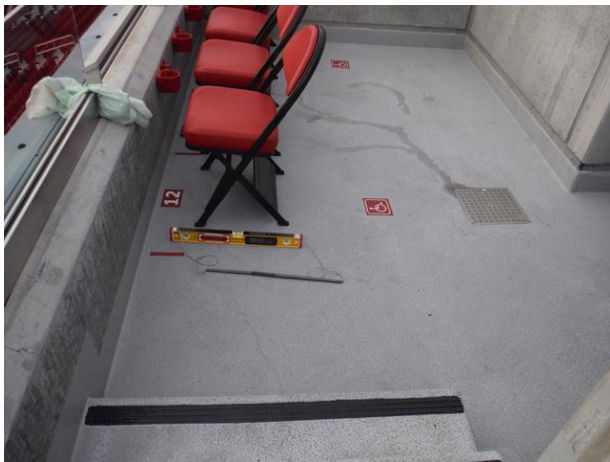
DSCF0757 (Copy)



DSCF0758 (Copy)



DSCF0759 (Copy)



DSCF0760 (Copy)



DSCF0761 (Copy)

Levi's Stadium Access Inspection

4900 Marie P DeBartolo Way, Santa Clara, California 95054

Survey Dates: January 24, 25 & 26, 2018



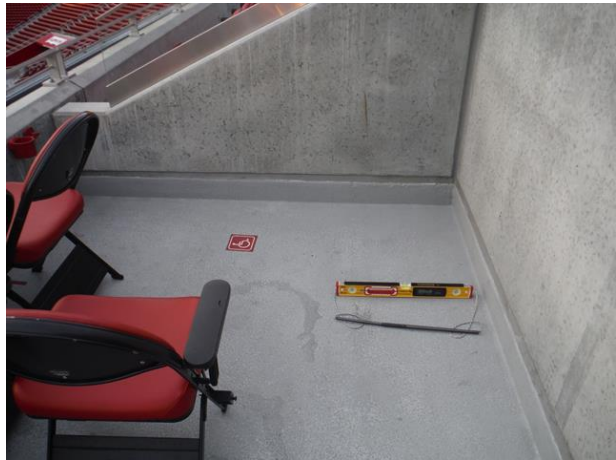
DSCF0762 (Copy)



DSCF0763 (Copy)



DSCF0764 (Copy)



DSCF0765 (Copy)



DSCF0766 (Copy)



DSCF0767 (Copy)

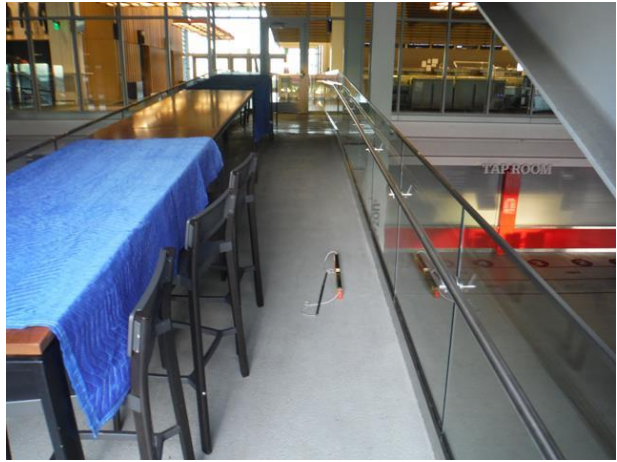
Levi's Stadium Access Inspection

4900 Marie P DeBartolo Way, Santa Clara, California 95954

Survey Dates: January 24, 25 & 26, 2018



DSCF0768 (Copy)



DSCF0769 (Copy)



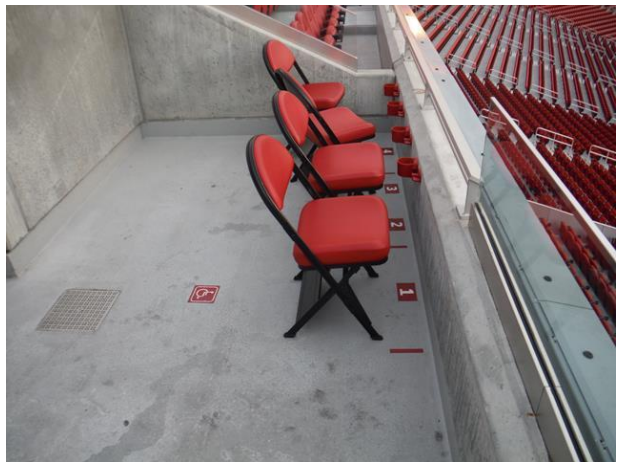
DSCF0770 (Copy)



DSCF0771 (Copy)



DSCF0772 (Copy)



DSCF0773 (Copy)

Levi's Stadium Access Inspection

4900 Marie P DeBartolo Way, Santa Clara, California 95954

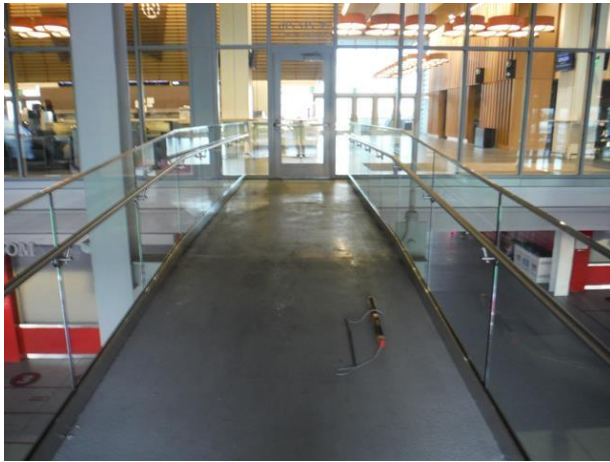
Survey Dates: January 24, 25 & 26, 2018



DSCF0774 (Copy)



DSCF0775 (Copy)



DSCF0776 (Copy)



DSCF0777 (Copy)

EXHIBIT D

Levi's Stadium Restaurants
Michael Mina's Bourbon Steak & Bourbon Pub, Tailgate
 4900 Marie P. DeBartolo Way, Santa Clara, CA 95054

Access Compliance Evaluation Survey Barrier Report

Survey Date: March 7, 2018

Report Date: April 6, 2018

Item	Description of Identified Barrier	As-Built	2010 ADAS	2010 CBC	ADAAG	Photos	Discussion
Michael Mina's Bourbon Pub							
Primary Entry Door							
The entry door to Michael Mina's Pub is also the primary entry door for both Michael Mina's Steak and Michael Mina's Tailgate.							
1	The double entry door is not identified as accessible by the International symbol of accessibility either on or immediately adjacent the right door leaf (viewed from the exterior)	See Photo	216.6	1117B.5.8.1.2	4.1.2(7)(c)	4236 & 4237	
2	The door opening force exceeds the maximum allowable 5 lb. for exterior doors	18lb & 12lb	NA	1133B.2.5, Item 3	NA	4241 thru 4244	
3	The sweep period of the door from an open position of 90-degrees to a point 12-degrees from the latch is less than 5 seconds.	3.87 sec & 3.69 sec	404.2.8.1	1133B.2.5.1	4.13.10	4245 & 4246	This requirement changed in the 2010 ADAS to be more restrictive than the 1991 ADAAG and the 2010 CBC.
4	The push side maneuvering space at the left door leaf (viewed from the push side of the door) is less than 48" measured perpendicular to the door in the closed position	Measured at 41-1/2"	404.2.4 Table 404.2.4.1	1133B.2.4.2	4.13.6	4283 thru 4285	
Bourbon Pub Interior							
5	There are a total of 70 seats provided. A minimum of 4 accessible tables are required; only one accessible table is provided.	70 total seats; 1-accessible table	226.1	1104B.5, Item 4	5.1	4286 thru 4307	
6	There is a drink rail provided around the perimeter of the space. There is not an accessible section of drink rail provided. Provide at least one 60" section of accessible counter.	Top of Drink Rail 42-1/2" AFF	226.1	1104B.5, Item 4	5.1	4318 thru 4324	
7	Loose floor mats can roll-up and become a tripping hazard. This can be an access barrier for persons who use a mobility device and should be removed or fixed in place.	See Photos	Title III Sec. 36.304	NA	Title III, Sec. 36.304	4238 & 4239	DSA commentary references ADA Title III, 36.304 with respect to removing floor mats that represent barrier to access.
8	A lift is used as part of the accessible route of travel from Bourbon Pub to Tailgate. A platform lift may be provided as part of an accessible route of travel under the specified conditions only. The	See Attached Plans	206.7 & 206.7.1 thru 5	1116B.2	4.1.3(5), Exception 4	4325 thru 4328 & 4360	

Levi's Stadium Restaurants
Michael Mina's Bourbon Steak & Bourbon Pub, Tailgate
 4900 Marie P. DeBartolo Way, Santa Clara, CA 95054

Access Compliance Evaluation Survey Barrier Report

Survey Date: March 7, 2018

Report Date: April 6, 2018

Item	Description of Identified Barrier	As-Built	2010 ADAS	2010 CBC	ADAAG	Photos	Discussion
	use of a platform lift as part of the accessible route of travel between Bourbon Pub and Tailgate does not comply with any of the specified conditions.						
9	During the inspection restaurant staff was observed using the lift to moving freight between levels. Lifts may not be used to move freight and is specifically signed indicating this.	See Photos	NA	1116B.2.7	NA	4325 thru 4327	The 2010 ADAS and 1991 ADAAG do not specific restrict use of a lift to move freight. The 2010 CBC is more restrictive.
10	At stairs and ramps handrail extensions must extend horizontally the full required length in the direction of travel. The handrails as constructed do not extend the full length before starting the return.	Approx. 8-1/2" extension top & 19" extension bottom	505.10.2 & .3	1133B.4.2.2	4.9.4(2)	4331 thru 4338	
11	Handrail gripping surface extension shall be in the same direction of stair flights. The handrail extension at the top of the stair between Bourbon Pub and Tailgate does not extend in same direction as the stair; it turns 90-degrees on one side.	Handrail turns 90-dgrees on one side	505.10	1133B.4.2.2	4.9.4 (2)	4329 & 4330	The 2010 CBC does not include language requiring the extension in the same direction of the stair flight and is less restrictive than the 2010 ADAS.

Michael Mina's Bourbon Steak

Entry Door

There is a double entry door directly to Michael Mina's Bourbon Steak, however, the primary entry door is to Michael Mina's Bourbon Steak and Bourbon Pub.

12	The double entry door is not identified as accessible by the International symbol of accessibility either on or immediately adjacent the right door leaf (viewed from the exterior)	See Photo	216.6	1117B.5.8.1.2	4.1.2(7)(c)	4247 thru 4249	
13	The push side maneuvering space at the left door leaf (viewed from the push side of the door) is less than 48' measured perpendicular to the door in the closed position	Measured at 34-1/2"	404.2.4 Table 404.2.4.1	1133B.2.4.2	4.13.6	4362 thru 4364	

Bourbon Steak Interior

14	There are a total of 88 seats provided. A minimum of 5 accessible tables are required and must be dispersed throughout the restaurant and	88 total seats; 1-accessible 6-top table	226.1	1104B.5, Item 4	5.1	4286 thru 4307	
----	---	--	-------	--------------------	-----	----------------	--

Levi's Stadium Restaurants
Michael Mina's Bourbon Steak & Bourbon Pub, Tailgate
 4900 Marie P. DeBartolo Way, Santa Clara, CA 95054

Access Compliance Evaluation Survey Barrier Report

Survey Date: March 7, 2018

Report Date: April 6, 2018

Item	Description of Identified Barrier	As-Built	2010 ADAS	2010 CBC	ADAAG	Photos	Discussion
	offer similar choices for seating as for able bodied guests; only one accessible table is provided.						
Restrooms Serving Bourbon Steak & Bourbon Pub							
Door to Vestibule							
15	The door opening force exceeds the maximum allowable 5 lb. for interior doors	10lb	404.2.9, Item 1	1133B.2.5, Item 2	4.13.11(2)(b)	4389, 4393 & 4394	
16	The sweep period of the door from an open position of 90-degrees to a point 12-degrees from the latch is less than 5 seconds.	4.02 sec.	404.2.8.1	1133B.2.5.1	4.13.10	4389 & 4395	This requirement changed in the 2010 ADAS to be more restrictive than the 1991 ADAAG and the 2010 CBC.
17	The geometric door sign, although not specifically required at this location, is used to provide the information as to restroom location and therefore must comply. The required contrast is not provided, a dark triangle on a light circle on the dark door	A light triangle on a dark circle on the dark door is provided.	NA	1115B.6.3	NA	4389 & 4390	The geometric symbol for restrooms identification is a California required and not a ADA requirement.
Men's Restroom							
18	The door opening force exceeds the maximum allowable 5 lb. for interior doors	9.5lb	404.2.9, Item 1	1133B.2.5, Item 2	4.13.11(2)(b)	4396,4403 & 4404	
19	The sweep period of the door from an open position of 90-degrees to a point 12-degrees from the latch is less than 5 seconds.	3.04 sec.	404.2.8.1	1133B.2.5.1	4.13.10	4396 & 4405	This requirement changed in the 2010 ADAS to be more restrictive than the 1991 ADAAG and the 2010 CBC.
20	The geometric door sign is not compliant. The required contrast is not provided, a light triangle on the dark door	A triangle on the dark door is provided.	NA	1115B.6.1	NA	4389 & 4390	The geometric symbol for restrooms identification is a California required and not an ADA requirement.
21	There is not a door pull on both sides of the wheelchair accessible stall door. A door pull is provided on the outside of the door only	Pull is on outside of door only	604.8.1.2	1115B.3.1.4.5	NA	4420 & 4421	
22	The seat cover dispenser is mounted above the side grab bar with less than 12" clearance above the bar. Also the top of the opening of the dispenser is more than 40" above the floor	Mounted above side grab bar at 46" AFF	609.3	1115B.8.3	4.2.4	4422, 4436 thru 4438	The 2010 ADAS has specific language requiring a minimum clear space of 12" above a grab bar. This is more restrictive than the 2010 CBC. The 2010 CBC does, however, require the maximum height of operable parts for restroom accessories of 40" AFF.

Levi's Stadium Restaurants
Michael Mina's Bourbon Steak & Bourbon Pub, Tailgate
 4900 Marie P. DeBartolo Way, Santa Clara, CA 95054

Access Compliance Evaluation Survey Barrier Report

Survey Date: March 7, 2018

Report Date: April 6, 2018

Item	Description of Identified Barrier	As-Built	2010 ADAS	2010 CBC	ADAAG	Photos	Discussion
23	A side by side double roll toilet paper dispenser is used. This does not allow both rolls to be located in an accessible location 7" to 9" from the front of the toilet to the centerline of the dispenser.	Side by side single roll dispenser	604.9.6	1115B.8.4	4.17.3 & Fig. 30	4422, 4439 thru 4444	The 2010 CBC required the dispenser to be a maximum 12" from the front of the toilet to the far end of the dispenser.
Women's Restroom							
24	The door opening force exceeds the maximum allowable 5 lb. for interior doors	10lb	404.2.9, Item 1	1133B.2.5, Item 2	4.13.11(2)(b)	4445, 4451 & 4452	
25	The sweep period of the door from an open position of 90-degrees to a point 12-degrees from the latch is less than 5 seconds.	3.76 sec.	404.2.8.1	1133B.2.5.1	4.13.10	4445 & 4453	This requirement changed in the 2010 ADAS to be more restrictive than the 1991 ADAAG and the 2010 CBC.
26	The geometric door sign is not compliant. The required contrast is not provided, a light triangle on the dark door	A triangle on the dark door is provided.	NA	1115B.6.1	NA	4445	The geometric symbol for restrooms identification is a California required and not an ADA requirement.
27	A clear knee space is not provided at either lavatory, moveable items are stored under the lavatory counter. The construction is in compliance, however, the facility is not maintained in an accessible and usable condition.	See Photos	606.2 28 CFR Part 36 Sec.36.211	1115B.4.3.2 1101B.3	4.19.3 28 CFR Part 36 Sec.36.211	4454	
28	There is not a door pull on both sides of the wheelchair accessible stall door. A door pull is provided on the outside of the door only	Pull is on outside of door only	604.8.1.2	1115B.3.1.4.5	NA	4468 thru 4470	
29	The seat cover dispenser is mounted above the side grab bar with less than 12" clearance above the bar. Also the top of the opening of the dispenser is more than 40" above the floor	Mounted above side grab bar at 46" AFF	609.3	1115B.8.3	4.2.4	4471, 4487 thru 4489	The 2010 ADAS has specific language requiring a minimum clear space of 12" above a grab bar. This is more restrictive than the 2010 CBC. The 2010 CBC does, however, require the maximum height of operable parts for restroom accessories of 40" AFF.
30	A side by side double roll toilet paper dispenser is used. This does not allow both rolls to be located in an accessible location 7" to 9" from the front of the toilet to the centerline of the dispenser.	Side by side single roll dispenser	604.9.6	1115B.8.4	4.17.3 & Fig. 30	4489, 4490 thru 4495	The 2010 CBC required the dispenser to be a maximum 12" from the front of the toilet to the far end of the dispenser.

Levi's Stadium Restaurants
Michael Mina's Bourbon Steak & Bourbon Pub, Tailgate
 4900 Marie P. DeBartolo Way, Santa Clara, CA 95054

Access Compliance Evaluation Survey Barrier Report

Survey Date: March 7, 2018

Report Date: April 6, 2018

Item	Description of Identified Barrier	As-Built	2010 ADAS	2010 CBC	ADAAG	Photos	Discussion
Michael Mina's Tailgate							
Also see the Levi's Stadium Barrier List, Item 5, addressing exterior seating.							
Entry Door							
There is a double entry door directly to Michael Mina's Tailgate, however, the primary entry door is to Michael Mina's Bourbon Steak and Bourbon Pub.							
31	The door opening force exceeds the maximum allowable 5 lb. for exterior doors	6.5lb & 9.5lb	NA	1133B.2.5, Item 3	NA	4261, 4267, 4269 thru 4272	
32	The sweep period of the door from an open position of 90-degrees to a point 12-degrees from the latch is less than 5 seconds.	3.78 sec.	404.2.8.1	1133B.2.5.1	4.13.10	4267 & 4274	This requirement changed in the 2010 ADAS to be more restrictive than the 1991 ADAAG and the 2010 CBC.
Tailgate Interior							
33	Accessible seating is not dispersed throughout the facility. Tailgate has a center bar area with table seating areas on each side. At the time of the site inspection all accessible seating locations were on one side of the bar only.	Accessible seating in one area only	226.2	1104B.5. Item 4	5.4	4341 thru 4346	
34	Loose floor mats can roll-up and become a tripping hazard. This can be an access barrier for persons who use a mobility device and should be removed or fixed in place.	See Photos	Title III Sec. 36.304	NA	Title III, Sec. 36.304	4261, 4265 & 4266	DSA commentary references ADA Title III, 36.304 with respect to removing floor mats that represent barrier to access.
Tailgate Exterior Seating							
35	At Michael Mina's Tailgate exterior table seating is provided. A minimum of 5% of the seating spaces shall be at accessible tables. There are no accessible tables provided.	See Photos	226.1	1122B.1	5.1 & 5.4	4793	
Restrooms Serving Tailgate							
Men's Restroom							
36	The door opening force exceeds the maximum	7lb	404.2.9, Item	1133B.2.5,	4.13.11(2)(b)	4502, 4510 &	

Levi's Stadium Restaurants
Michael Mina's Bourbon Steak & Bourbon Pub, Tailgate
 4900 Marie P. DeBartolo Way, Santa Clara, CA 95054

Access Compliance Evaluation Survey Barrier Report

Survey Date: March 7, 2018

Report Date: April 6, 2018

Item	Description of Identified Barrier	As-Built	2010 ADAS	2010 CBC	ADAAG	Photos	Discussion
	allowable 5 lb. for interior doors.		1	Item 2		4511	
37	The sweep period of the door from an open position of 90-degrees to a point 12-degrees from the latch is less than 5 seconds.	3.56 sec.	404.2.8.1	1133B.2.5.1	4.13.10	4502 & 4512	This requirement changed in the 2010 ADAS to be more restrictive than the 1991 ADAAG and the 2010 CBC.
38	There are two lavatories at the restroom; neither is a minimum 18" from the sidewall to the centerline of the fixture.	Measured at 14-1/2" & 14-1/4"	NA	1115B.4.3 Item 2	NA	4520 thru 4523	
39	A clear knee space is not provided at either lavatory, moveable items are store under the lavatory counter. The construction in compliance, however, the facility is not maintained in an accessible and usable condition.	See Photos	606.2 28 CFR Part 36 Sec.36.211	1115B.4.3.2 1101B.3	4.19.3 28 CFR Part 36 Sec.36.211	4514	
40	At the lavatories the hot water and waste lines are not completely insulated. The existing insulation has slipped one side and come partially off on the other side	See Photos	606.5 28 CFR Part 36 Sec.36.211	1115B.4.3 Item 4 1101B.3	4.19.4 28 CFR Part 36 Sec.36.211	4518 & 4519	
41	The door pull at the inside of the wheelchair accessible stall door is not located below the latch. As located, the door pull conflicts with the use of the latch.	Door pull is to the side of the latch	604.8.1.2	1115B.3.1.4.5	NA	4533 thru 4535	
42	The baby changing station, when left in the open position prevents entry into the wheelchair accessible stall. The open table encroaches into the required pull side door clearance	See Photos	404.2.4 Table 404.2.4.1	1133B.2.4.2	4.13.6	4338 & 4339	The 2016 CBC now specifically prohibits locating a baby changing table in the wheelchair accessible stall.
43	At the wheelchair accessible toilet stall the required toe space beyond the toilet partition is not provided; there is less than 9" clearance to the bottom of the toilet partition.	Clearance measured at 6"	604.8.1.4	NA	4.17.4	4542 & 4543	The 2010 CBC does not include this requirement and therefore, the 2010 ADAS is the most restrictive standard
44	The seat cover dispenser is mounted above the side grab bar with less than 12" clearance above the bar. Also the top of the opening of the dispenser is more than 40" above the floor	Mounted above side grab bar at 46" AFF	609.3	1115B.8.3	4.2.4	4556 & 4557	The 2010 ADAS has specific language requiring a minimum clear space of 12" above a grab bar. This is more restrictive than the 2010 CBC. The 2010 CBC does, however, require the maximum height of operable parts for restroom accessories of 40" AFF.
45	A side by side double roll toilet paper dispenser is used. This does not allow both rolls to be located in an accessible location 7" to 9" from the front of the toilet to the centerline of the dispenser.	Side by side single roll dispenser	604.9.6	1115B.8.4	4.17.3 & Fig. 30	4556, 4559 thru 4564	The 2010 CBC required the dispenser to be a maximum 12" from the front of the toilet to the far end of the dispenser.

Levi's Stadium Restaurants
Michael Mina's Bourbon Steak & Bourbon Pub, Tailgate
 4900 Marie P. DeBartolo Way, Santa Clara, CA 95054

Access Compliance Evaluation Survey Barrier Report

Survey Date: March 7, 2018

Report Date: April 6, 2018

Item	Description of Identified Barrier	As-Built	2010 ADAS	2010 CBC	ADAAG	Photos	Discussion
Women's Restroom							
46	The sweep period of the door from an open position of 90-degrees to a point 12-degrees from the latch is less than 5 seconds.	3.56 sec.	404.2.8.1	1133B.2.5, Item 2	4.13.10	4569 & 4575	This requirement changed in the 2010 ADAS to be more restrictive than the 1991 ADAAG and the 2010 CBC.
47	A clear knee space is not provided at either lavatory, moveable items are stored under the lavatory counter blocking the knee clearance to the center lavatory; the only accessible one of the three provided. The construction in compliance, however, the facility is not maintained in an accessible and usable condition.	See Photos	606.2 28 CFR Part 36 Sec.36.211	1115B.4.3.2 1101B.3	4.19.3 28 CFR Part 36 Sec.36.211	4578	
48	At the lavatories the hot water and waste lines are not completely insulated. At two of the three lavatories the existing insulation has slipped at the wasted line and is not provided at the hot water line.	See Photos	606.5 28 CFR Part 36 Sec.36.211	1115B.4.3 Item 4 1101B.3	4.19.4 28 CFR Part 36 Sec.36.211	4586 thru 4588	
49	The door pull at the inside of the wheelchair accessible stall door is not located below the latch. As located, the door pull conflicts with the use of the latch.	Door pull is to the side of the latch	604.8.1.2	1115B.3.1.4.5	NA	4591 thru 4593	
50	The baby changing station, when left in the open position prevents entry into the wheelchair accessible stall. The open table encroaches into the required pull side door clearance	See Photos	404.2.4 Table 404.2.4.1	1133B.2.4.2	4.13.6	4595 & 4596	The 2016 CBC now specifically prohibits locating a baby changing table in the wheelchair accessible stall.
51	At the wheelchair accessible toilet stall the required toe space beyond the toilet partition is not provided; there is less than 9" clearance to the bottom of the toilet partition.	Clearance measured at 6-3/8"	604.8.1.4	NA	4.17.4	4602 & 4603	The 2010 CBC does not include this requirement and therefore, the 2010 ADAS is the most restrictive standard
52	The seat cover dispenser is mounted above the side grab bar with less than 12" clearance above the bar. Also the top of the opening of the dispenser is more than 40" above the floor	Mounted above side grab bar at 46" AFF	609.3	1115B.8.3	4.2.4	4620 & 4621	The 2010 ADAS has specific language requiring a minimum clear space of 12" above a grab bar. This is more restrictive than the 2010 CBC. The 2010 CBC does, however, require the maximum height of operable parts for restroom accessories of 40" AFF.
53	A side by side double roll toilet paper dispenser is used. This does not allow both rolls to be located in an accessible location 7" to 9" from the front of	Side by side single roll dispenser	604.9.6	1115B.8.4	4.17.3 & Fig. 30	4623 thru 4628	The 2010 CBC required the dispenser to be a maximum 12" from the front of the toilet to the far end of the dispenser.

Levi's Stadium Restaurants
Michael Mina's Bourbon Steak & Bourbon Pub, Tailgate
 4900 Marie P. DeBartolo Way, Santa Clara, CA 95054

Access Compliance Evaluation Survey Barrier Report

Survey Date: March 7, 2018

Report Date: April 6, 2018

Item	Description of Identified Barrier	As-Built	2010 ADAS	2010 CBC	ADAAG	Photos	Discussion
	the toilet to the centerline of the dispenser.						
Loft Meeting Rooms							
Accessible Route of Travel from Tailgate to Loft Meeting Rooms							
The accessible route of travel at the first floor is through the employee side of the food serving counters to reach the elevator. At the second floor the elevator opens into the commercial kitchen.							
Elevator							
54	The elevator which provides the accessible route of travel to the Loft Meeting Rooms is accessed through the working kitchen which is specifically prohibited in the CBC. Also, the ADAS requires accessible routes to coincide with or be located in the same area as the general circulation path. The stairs to the Loft meeting Rooms is in the public area of Tailgate while the elevator is in the working kitchen of Tailgate.	See Photos	206.3	1114B.1.2	NA	4631 thru 4639 4653 thru 4659	
55	The route of travel through the kitchen area to the elevator is less than the minimum required 36"	Minimum dimension measured 30"	403.5.1	1114B.1.2	4.3.3	4632 thru 4639	
Ramp at 2nd Floor							
56	The ramp at the 2 nd floor leading from the kitchen to the meeting rooms does not have a continuous handrail on both sides. Kitchen equipment interrupts the handrail.	See Photos	505.2	1133B.5.5	4.8.5	4655 thru 4660	
57	At stairs and ramps handrail extensions must extend horizontally the full required length in the direction of travel. The ramp handrails as constructed do not extend the full length before starting the return.	Approx. 8" to 9" extensions	505.10.2 & .3	1133B.4.2.2	4.9.4(2)	4783 thru 4785 4791 & 4792	
Stair – General circulation stair from Tailgate to Loft Meeting Rooms							
58	At stairs and ramps handrail extensions must extend horizontally the full required length in the	Approx. 8" to 9" extensions	505.10.2 & .3	1133B.4.2.2	4.9.4(2)	4783 thru 4785 4791 & 4792	

Levi's Stadium Restaurants
Michael Mina's Bourbon Steak & Bourbon Pub, Tailgate
 4900 Marie P. DeBartolo Way, Santa Clara, CA 95054

Access Compliance Evaluation Survey Barrier Report

Survey Date: March 7, 2018

Report Date: April 6, 2018

Item	Description of Identified Barrier	As-Built	2010 ADAS	2010 CBC	ADAAG	Photos	Discussion
	direction of travel. The stair handrails as constructed do not extend the full length before starting the return.						
59	Handrail gripping surface extension shall be in the same direction of stair flights. The handrail extension at the top of the stair from Tailgate to the Loft Meeting Rooms does not extend in same direction as the stair; it turns 90-degrees on one side.	Handrail turns 90-dgrees on one side	505.10	1133B.4.2.2	4.9.4 (2)	4662 & 4663	The 2010 CBC does not include language requiring the extension in the same direction of the stair flight and is less restrictive than the 2010 ADAS.
Loft Meeting Rooms – Skybox 01-03.10.01 & Skybox 02 – 03.10.02							
At the time of the inspection Skybox 01 – 03.10.01 was being set up for an event and I was denied access for inspection. It is assumed, based on information provided by the defendant, it is similar to Skybox 02 – 03.10.02.							
60	The pull side maneuvering space is less than 60" measured perpendicular to the door in the closed position.	Measured at 58-3/4"	404.2.4 Table 404.2.4.1	1133B.2.4.2	4.13.6	4283 thru 4285	
61	The top of the work counters are more than 34" above the floor.	37-7/8" AFF	902.3	1122B.4	4.32.4	4682 thru 4684	
Restrooms Serving Loft Meeting Room							
Single Accommodation Unisex Restroom 1							
62	The door opening force exceeds the maximum allowable 5 lb. for interior doors	7.5lb	404.2.9, Item 1	1133B.2.5, Item 2	4.13.11(2)(b)	4690, 4697 & 4698	
63	The sweep period of the door from an open position of 90-dgrees to a point 12-degrees from the latch is less than 5 seconds.	3.49 sec.	404.2.8.1	1133B.2.5.1	4.13.10	4690 & 4700	This requirement changed in the 2010 ADAS to be more restrictive than the 1991 ADAAG and the 2010 CBC.
64	The geometric door sign is not compliant. The required contrast is not provided, a dark triangle on a light circle on the dark door	A light triangle on a dark circle on the dark door is provided.	NA	1115B.6.3	NA	4690 & 4692	The geometric symbol for restrooms identification is a California required and not a ADA requirement.
65	A clear space for a parallel approach to the paper towel dispenser is not provided.	29-1/4"	305 & 309	1118B.4	4.2.4.1	4708 & 4709	
66	At the lavatory the hot water and waste lines are	See Photos	606.5	1115B.4.3	4.19.4	4707	

Levi's Stadium Restaurants
Michael Mina's Bourbon Steak & Bourbon Pub, Tailgate
 4900 Marie P. DeBartolo Way, Santa Clara, CA 95054

Access Compliance Evaluation Survey Barrier Report

Survey Date: March 7, 2018

Report Date: April 6, 2018

Item	Description of Identified Barrier	As-Built	2010 ADAS	2010 CBC	ADAAG	Photos	Discussion
	not insulated. .		28 CFR Part 36 Sec.36.211	Item 4 1101B.3	28 CFR Part 36 Sec.36.211		
67	The required clear space at the toilet 60" measured perpendicular to the side wall is not provided.	55-3/4"	604.3.1	1115B.4.1 Item 2.1	4.16.1 & Fig. 28	4713 & 4714	
68	The seat cover dispenser is mounted above the side grab bar with less than 12" clearance above the bar. Also the top of the opening of the dispenser is more than 40" above the floor	Mounted above side grab bar at 46-1/2" AFF	609.3	1115B.8.3	4.2.4	4729 & 4730	The 2010 ADAS has specific language requiring a minimum clear space of 12" above a grab bar. This is more restrictive than the 2010 CBC. The 2010 CBC does, however, require the maximum height of operable parts for restroom accessories of 40" AFF.
69	A side by side double roll toilet paper dispenser is used. This does not allow both rolls to be located in an accessible location 7" to 9" from the front of the toilet to the centerline of the dispenser.	Side by side single roll dispenser	604.9.6	1115B.8.4	4.17.3 & Fig. 30	4732 thru 4737	The 2010 CBC required the dispenser to be a maximum 12" from the front of the toilet to the far end of the dispenser.
Single Accommodation Unisex Restroom 2							
70	The door opening force exceeds the maximum allowable 5 lb. for interior doors	7.10lb	404.2.9, Item 1	1133B.2.5, Item 2	4.13.11(2)(b)	4738, 4742 & 4743	
71	The sweep period of the door from an open position of 90-dgrees to a point 12-degrees from the latch is less than 5 seconds.	3.49 sec.	404.2.8.1	1133B.2.5.1	4.13.10	4738 & 4744	This requirement changed in the 2010 ADAS to be more restrictive than the 1991 ADAAG and the 2010 CBC.
72	The geometric door sign is not compliant. The required contrast is not provided, a dark triangle on a light circle on the dark door	A light triangle on a dark circle on the dark door is provided.	NA	1115B.6.3	NA	4738 & 4739	The geometric symbol for restrooms identification is a California required and not a ADA requirement.
73	At the lavatory the hot water and waste lines are not insulated. .	See Photos	606.5 28 CFR Part 36 Sec.36.211	1115B.4.3 Item 4 1101B.3	4.19.4 28 CFR Part 36 Sec.36.211	4751	
74	The seat cover dispenser is mounted above the side grab bar with less than 12" clearance above the bar. Also the top of the opening of the dispenser is more than 40" above the floor	Mounted above side grab bar at 46-1/2" AFF	609.3	1115B.8.3	4.2.4	4771 & 4772	The 2010 ADAS has specific language requiring a minimum clear space of 12" above a grab bar. This is more restrictive than the 2010 CBC. The 2010 CBC does, however, require the maximum height of operable parts for restroom accessories of 40" AFF.

Levi's Stadium Restaurants
Michael Mina's Bourbon Steak & Bourbon Pub, Tailgate
 4900 Marie P. DeBartolo Way, Santa Clara, CA 95054

Access Compliance Evaluation Survey Barrier Report

Survey Date: March 7, 2018

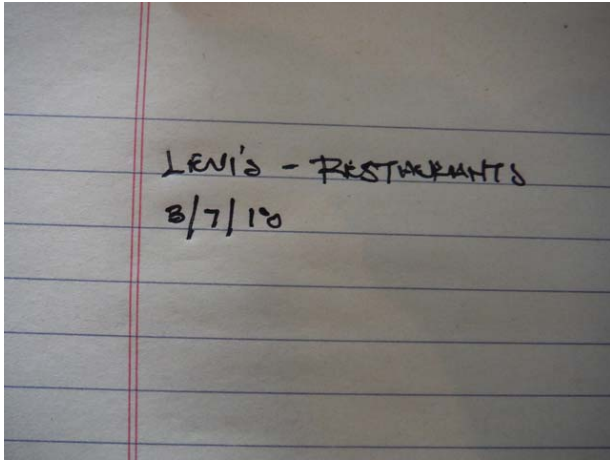
Report Date: April 6, 2018

Item	Description of Identified Barrier	As-Built	2010 ADAS	2010 CBC	ADAAG	Photos	Discussion
75	A side by side double roll toilet paper dispenser is used. This does not allow both rolls to be located in an accessible location 7" to 9" from the front of the toilet to the centerline of the dispenser.	Side by side single roll dispenser	604.9.6	1115B.8.4	4.17.3 & Fig. 30	4774 thru 4779	The 2010 CBC required the dispenser to be a maximum 12" from the front of the toilet to the far end of the dispenser.

Levi's Stadium Access Inspection - Restaurants

4900 Marie P. DeBartolo Way, Santa Clara, California 95954

Survey Date: March 7, 2018



DSCF4235 (Copy)



DSCF4236 (Copy)



DSCF4237 (Copy)



DSCF4238 (Copy)



DSCF4239 (Copy)

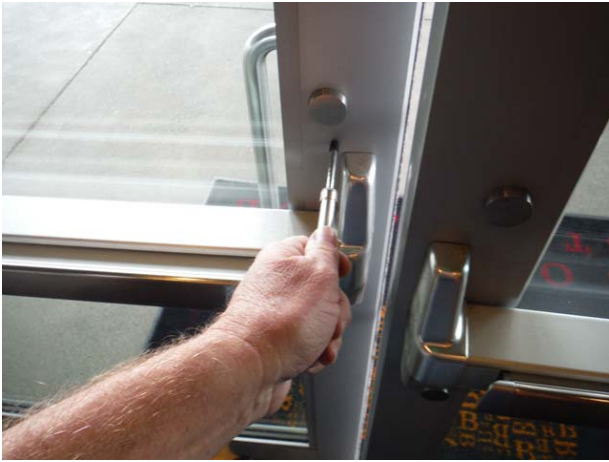


DSCF4240 (Copy)

Levi's Stadium Access Inspection - Restaurants

4900 Marie P. DeBartolo Way, Santa Clara, California 95954

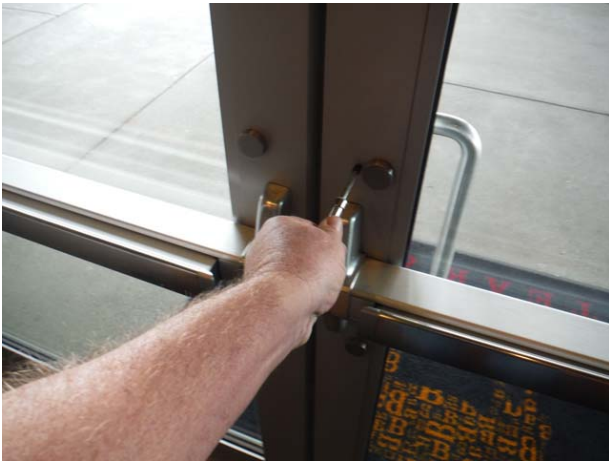
Survey Date: March 7, 2018



DSCF4241 (Copy)



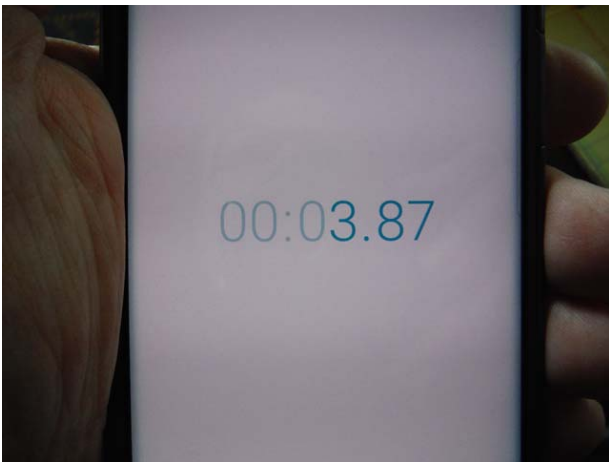
DSCF4242 (Copy)



DSCF4243 (Copy)



DSCF4244 (Copy)



DSCF4245 (Copy)



DSCF4246 (Copy)

Levi's Stadium Access Inspection - Restaurants

4900 Marie P. DeBartolo Way, Santa Clara, California 95954

Survey Date: March 7, 2018



DSCF4247 (Copy)



DSCF4248 (Copy)



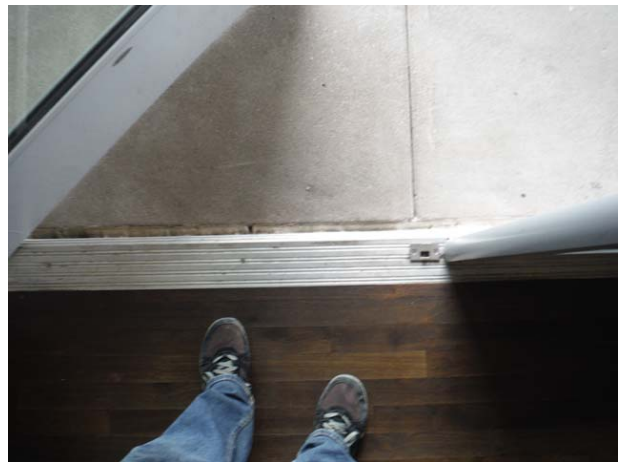
DSCF4249 (Copy)



DSCF4250 (Copy)



DSCF4251 (Copy)



DSCF4252 (Copy)

Levi's Stadium Access Inspection - Restaurants

4900 Marie P. DeBartolo Way, Santa Clara, California 95954

Survey Date: March 7, 2018



DSCF4253 (Copy)



DSCF4254 (Copy)



DSCF4255 (Copy)



DSCF4257 (Copy)



DSCF4258 (Copy)



DSCF4259 (Copy)

Levi's Stadium Access Inspection - Restaurants

4900 Marie P. DeBartolo Way, Santa Clara, California 95954

Survey Date: March 7, 2018



DSCF4260 (Copy)



DSCF4261 (Copy)



DSCF4262 (Copy)



DSCF4263 (Copy)



DSCF4264 (Copy)



DSCF4265 (Copy)

Levi's Stadium Access Inspection - Restaurants

4900 Marie P. DeBartolo Way, Santa Clara, California 95054

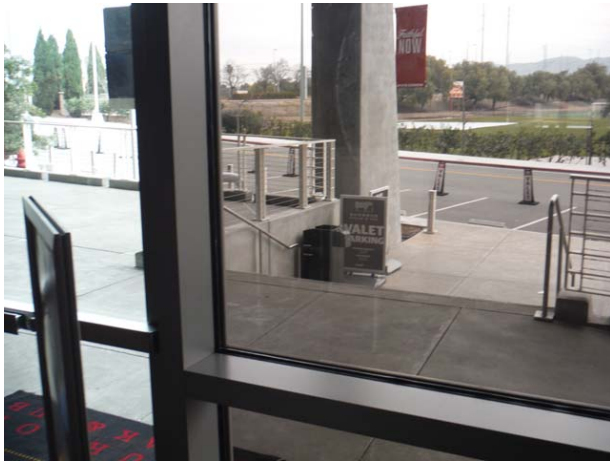
Survey Date: March 7, 2018



DSCF4266 (Copy)



DSCF4267 (Copy)



DSCF4268 (Copy)



DSCF4269 (Copy)



DSCF4270 (Copy)



DSCF4271 (Copy)

Levi's Stadium Access Inspection - Restaurants

4900 Marie P. DeBartolo Way, Santa Clara, California 95054

Survey Date: March 7, 2018



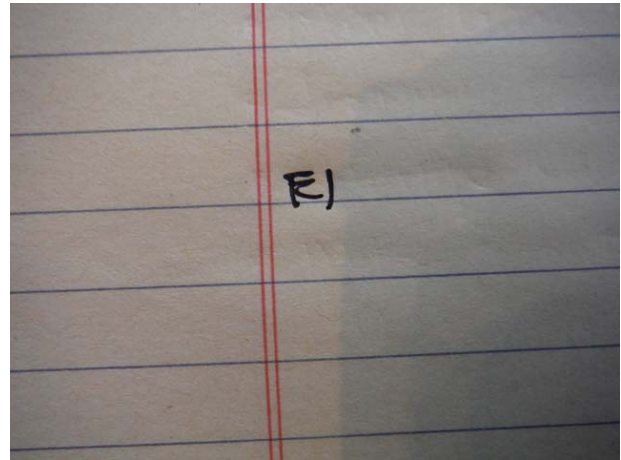
DSCF4272 (Copy)



DSCF4273 (Copy)



DSCF4274 (Copy)



DSCF4275 (Copy)



DSCF4276 (Copy)



DSCF4277 (Copy)

Levi's Stadium Access Inspection - Restaurants

4900 Marie P. DeBartolo Way, Santa Clara, California 95054

Survey Date: March 7, 2018



DSCF4278 (Copy)



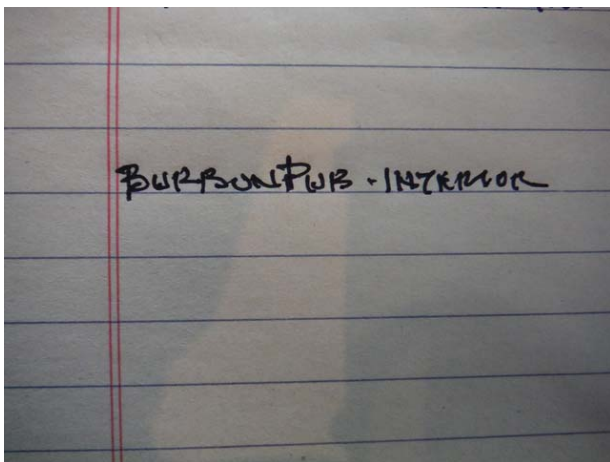
DSCF4279 (Copy)



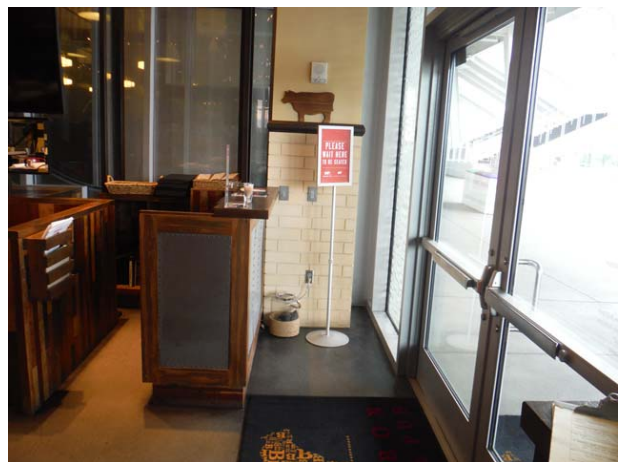
DSCF4280 (Copy)



DSCF4281 (Copy)



DSCF4282 (Copy)



DSCF4283 (Copy)

Levi's Stadium Access Inspection - Restaurants

4900 Marie P. DeBartolo Way, Santa Clara, California 95954

Survey Date: March 7, 2018



DSCF4284 (Copy)



DSCF4285 (Copy)



DSCF4286 (Copy)



DSCF4287 (Copy)



DSCF4288 (Copy)



DSCF4289 (Copy)

Levi's Stadium Access Inspection - Restaurants

4900 Marie P. DeBartolo Way, Santa Clara, California 95954

Survey Date: March 7, 2018



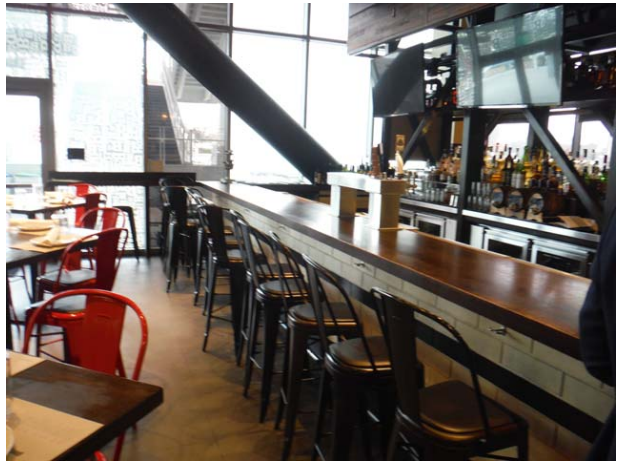
DSCF4290 (Copy)



DSCF4291 (Copy)



DSCF4292 (Copy)



DSCF4293 (Copy)



DSCF4294 (Copy)



DSCF4295 (Copy)

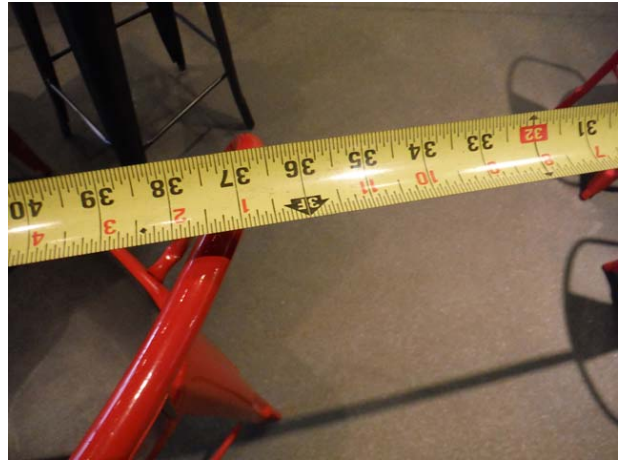
Levi's Stadium Access Inspection - Restaurants

4900 Marie P. DeBartolo Way, Santa Clara, California 95954

Survey Date: March 7, 2018



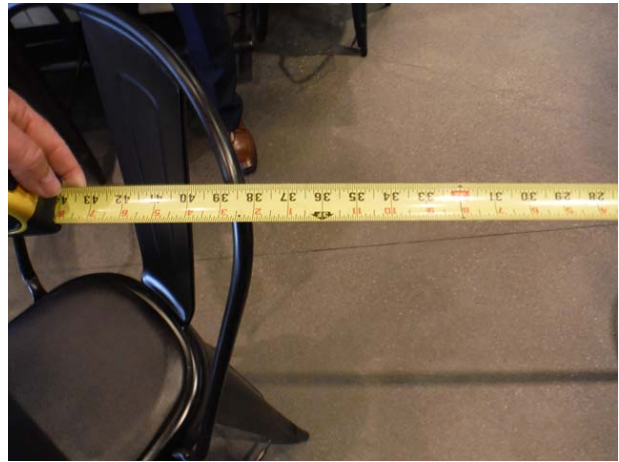
DSCF4296 (Copy)



DSCF4297 (Copy)



DSCF4298 (Copy)



DSCF4299 (Copy)



DSCF4300 (Copy)



DSCF4301 (Copy)

Levi's Stadium Access Inspection - Restaurants

4900 Marie P. DeBartolo Way, Santa Clara, California 95954

Survey Date: March 7, 2018



DSCF4302 (Copy)



DSCF4303 (Copy)



DSCF4304 (Copy)



DSCF4305 (Copy)



DSCF4306 (Copy)



DSCF4307 (Copy)

Levi's Stadium Access Inspection - Restaurants

4900 Marie P. DeBartolo Way, Santa Clara, California 95054

Survey Date: March 7, 2018



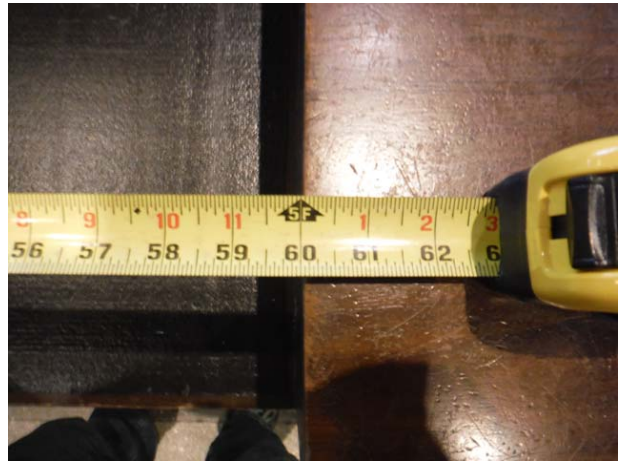
DSCF4308 (Copy)



DSCF4309 (Copy)



DSCF4310 (Copy)



DSCF4311 (Copy)



DSCF4312 (Copy)



DSCF4313 (Copy)

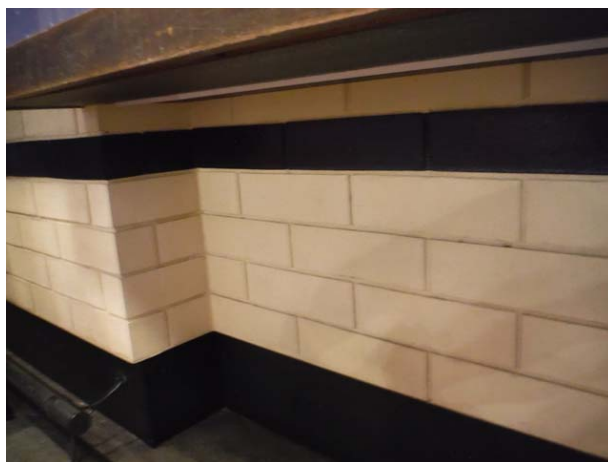
Levi's Stadium Access Inspection - Restaurants

4900 Marie P. DeBartolo Way, Santa Clara, California 95054

Survey Date: March 7, 2018



DSCF4314 (Copy)



DSCF4315 (Copy)



DSCF4316 (Copy)



DSCF4317 (Copy)



DSCF4318 (Copy)



DSCF4319 (Copy)

Levi's Stadium Access Inspection - Restaurants

4900 Marie P. DeBartolo Way, Santa Clara, California 95954

Survey Date: March 7, 2018



DSCF4320 (Copy)



DSCF4324 (Copy)



DSCF4325 (Copy)



DSCF4326 (Copy)



DSCF4327 (Copy)



DSCF4328 (Copy)

Levi's Stadium Access Inspection - Restaurants

4900 Marie P. DeBartolo Way, Santa Clara, California 95954

Survey Date: March 7, 2018



DSCF4329 (Copy)



DSCF4330 (Copy)



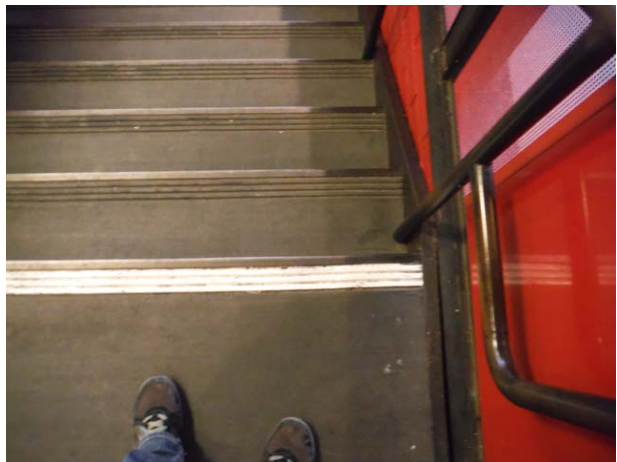
DSCF4331 (Copy)



DSCF4332 (Copy)



DSCF4333 (Copy)



DSCF4334 (Copy)

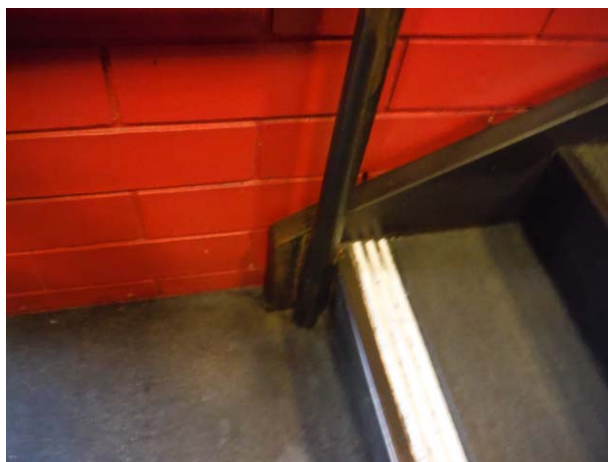
Levi's Stadium Access Inspection - Restaurants

4900 Marie P. DeBartolo Way, Santa Clara, California 95954

Survey Date: March 7, 2018



DSCF4335 (Copy)



DSCF4336 (Copy)



DSCF4337 (Copy)



DSCF4338 (Copy)



DSCF4339 (Copy)



DSCF4340 (Copy)

Levi's Stadium Access Inspection - Restaurants

4900 Marie P. DeBartolo Way, Santa Clara, California 95954

Survey Date: March 7, 2018



DSCF4341 (Copy)



DSCF4342 (Copy)



DSCF4343 (Copy)



DSCF4344 (Copy)



DSCF4345 (Copy)



DSCF4346 (Copy)

Levi's Stadium Access Inspection - Restaurants

4900 Marie P. DeBartolo Way, Santa Clara, California 95054

Survey Date: March 7, 2018

NOT USED



DSCF4348 (Copy)

DSCF4347 (Copy)



DSCF4349 (Copy)



DSCF4350 (Copy)



DSCF4351 (Copy)



DSCF4352 (Copy)

Levi's Stadium Access Inspection - Restaurants

4900 Marie P. DeBartolo Way, Santa Clara, California 95954

Survey Date: March 7, 2018



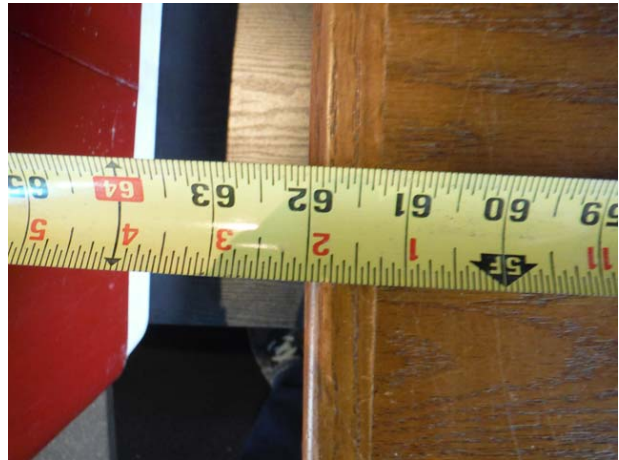
DSCF4353 (Copy)



DSCF4354 (Copy)



DSCF4355 (Copy)



DSCF4356 (Copy)



DSCF4357 (Copy)



DSCF4358 (Copy)

Levi's Stadium Access Inspection - Restaurants

4900 Marie P. DeBartolo Way, Santa Clara, California 95954

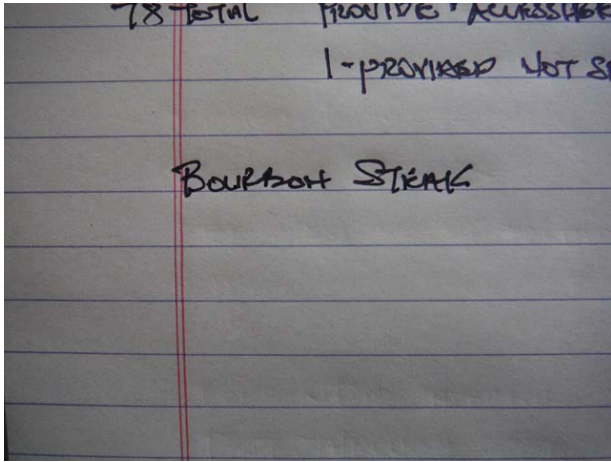
Survey Date: March 7, 2018



DSCF4359 (Copy)



DSCF4360 (Copy)



DSCF4361 (Copy)



DSCF4362 (Copy)



DSCF4363 (Copy)



DSCF4364 (Copy)

Levi's Stadium Access Inspection - Restaurants

4900 Marie P. DeBartolo Way, Santa Clara, California 95954

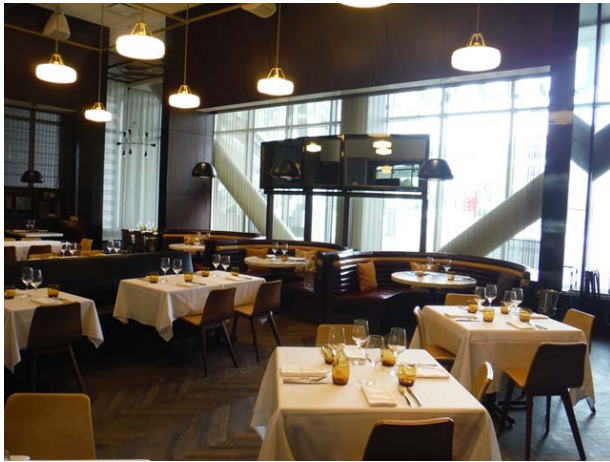
Survey Date: March 7, 2018



DSCF4365 (Copy)



DSCF4366 (Copy)



DSCF4367 (Copy)



DSCF4368 (Copy)



DSCF4369 (Copy)



DSCF4370 (Copy)

Levi's Stadium Access Inspection - Restaurants

4900 Marie P. DeBartolo Way, Santa Clara, California 95954

Survey Date: March 7, 2018



DSCF4371 (Copy)



DSCF4372 (Copy)



DSCF4373 (Copy)



DSCF4374 (Copy)



DSCF4375 (Copy)



DSCF4376 (Copy)

Levi's Stadium Access Inspection - Restaurants

4900 Marie P. DeBartolo Way, Santa Clara, California 95954

Survey Date: March 7, 2018



DSCF4377 (Copy)



DSCF4378 (Copy)

NOT USED



DSCF4380 (Copy)



DSCF4381 (Copy)



DSCF4382 (Copy)

Levi's Stadium Access Inspection - Restaurants

4900 Marie P. DeBartolo Way, Santa Clara, California 95054

Survey Date: March 7, 2018



DSCF4383 (Copy)



DSCF4384 (Copy)



DSCF4385 (Copy)



DSCF4386 (Copy)



DSCF4387 (Copy)



DSCF4388 (Copy)

Levi's Stadium Access Inspection - Restaurants

4900 Marie P. DeBartolo Way, Santa Clara, California 95954

Survey Date: March 7, 2018



DSCF4389 (Copy)



DSCF4390 (Copy)



DSCF4391 (Copy)



DSCF4392 (Copy)



DSCF4393 (Copy)

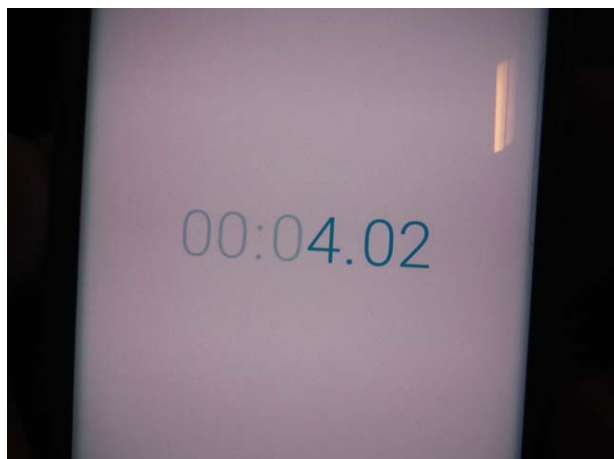


DSCF4394 (Copy)

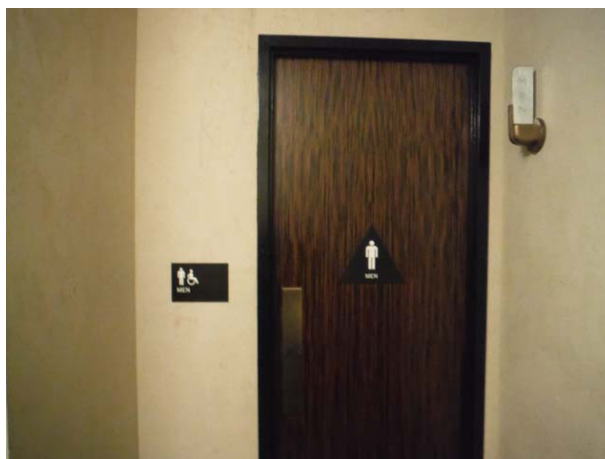
Levi's Stadium Access Inspection - Restaurants

4900 Marie P. DeBartolo Way, Santa Clara, California 95954

Survey Date: March 7, 2018



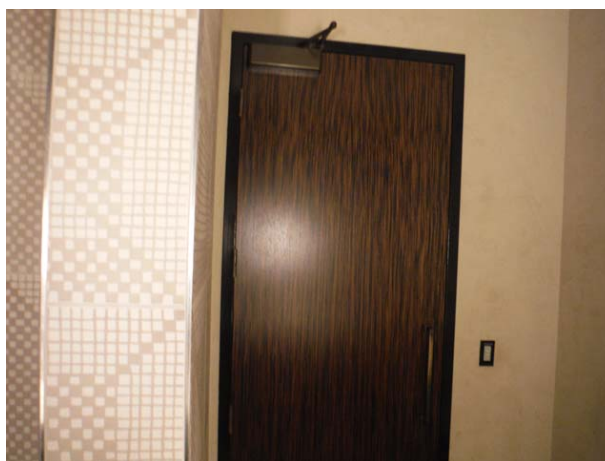
DSCF4395 (Copy)



DSCF4396 (Copy)



DSCF4397 (Copy)



DSCF4398 (Copy)



DSCF4399 (Copy)



DSCF4400 (Copy)

Levi's Stadium Access Inspection - Restaurants

4900 Marie P. DeBartolo Way, Santa Clara, California 95054

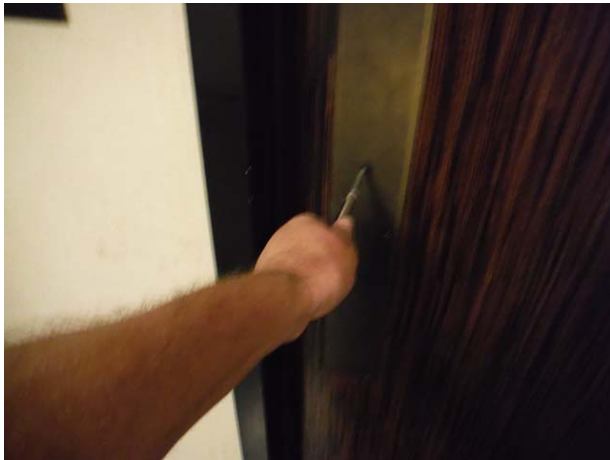
Survey Date: March 7, 2018



DSCF4401 (Copy)



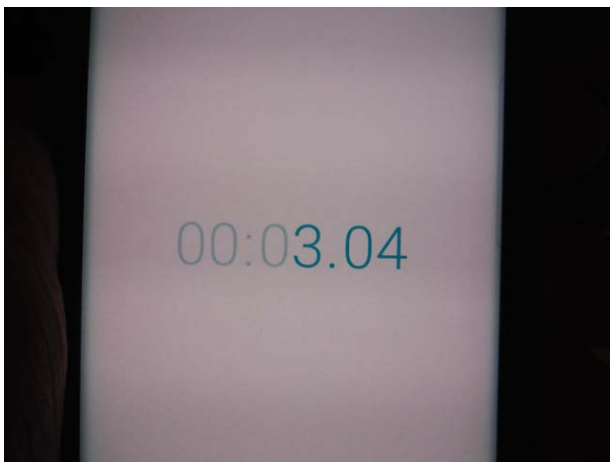
DSCF4402 (Copy)



DSCF4403 (Copy)



DSCF4404 (Copy)



DSCF4405 (Copy)

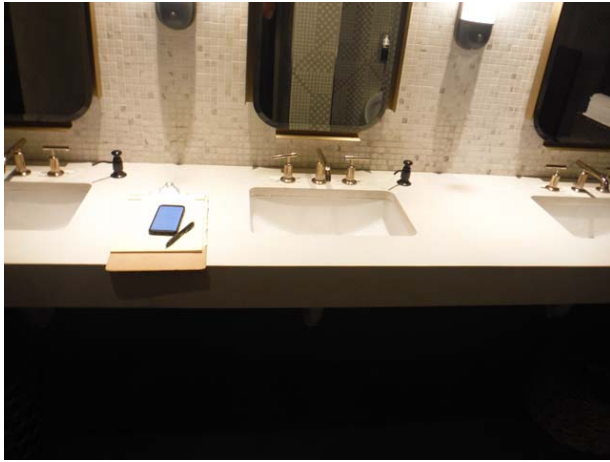


DSCF4406 (Copy)

Levi's Stadium Access Inspection - Restaurants

4900 Marie P. DeBartolo Way, Santa Clara, California 95954

Survey Date: March 7, 2018



DSCF4407 (Copy)



DSCF4408 (Copy)



DSCF4409 (Copy)



DSCF4410 (Copy)



DSCF4411 (Copy)



DSCF4412 (Copy)

Levi's Stadium Access Inspection - Restaurants

4900 Marie P. DeBartolo Way, Santa Clara, California 95954

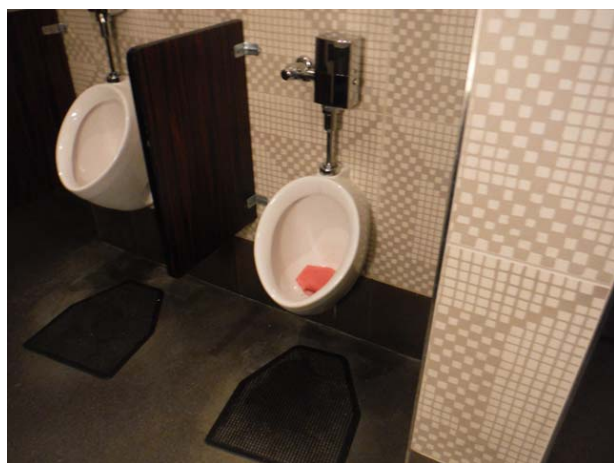
Survey Date: March 7, 2018



DSCF4413 (Copy)



DSCF4414 (Copy)



DSCF4415 (Copy)



DSCF4416 (Copy)



DSCF4417 (Copy)



DSCF4418 (Copy)

Levi's Stadium Access Inspection - Restaurants

4900 Marie P. DeBartolo Way, Santa Clara, California 95954

Survey Date: March 7, 2018



DSCF4419 (Copy)



DSCF4420 (Copy)



DSCF4421 (Copy)



DSCF4422 (Copy)



DSCF4423 (Copy)



DSCF4424 (Copy)

Levi's Stadium Access Inspection - Restaurants

4900 Marie P. DeBartolo Way, Santa Clara, California 95954

Survey Date: March 7, 2018



DSCF4425 (Copy)



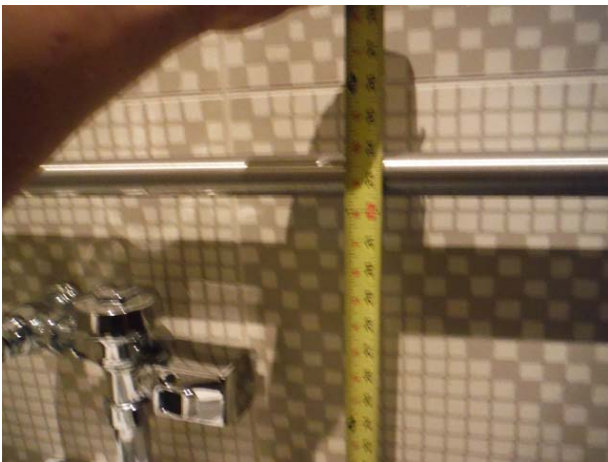
DSCF4426 (Copy)



DSCF4427 (Copy)



DSCF4428 (Copy)



DSCF4429 (Copy)



DSCF4430 (Copy)

Levi's Stadium Access Inspection - Restaurants

4900 Marie P. DeBartolo Way, Santa Clara, California 95954

Survey Date: March 7, 2018



DSCF4431 (Copy)



DSCF4432 (Copy)



DSCF4433 (Copy)



DSCF4434 (Copy)



DSCF4435 (Copy)



DSCF4436 (Copy)

Levi's Stadium Access Inspection - Restaurants

4900 Marie P. DeBartolo Way, Santa Clara, California 95954

Survey Date: March 7, 2018



DSCF4437 (Copy)



DSCF4438 (Copy)



DSCF4439 (Copy)



DSCF4440 (Copy)



DSCF4441 (Copy)



DSCF4442 (Copy)

Levi's Stadium Access Inspection - Restaurants

4900 Marie P. DeBartolo Way, Santa Clara, California 95954

Survey Date: March 7, 2018



DSCF4443 (Copy)



DSCF4444 (Copy)



DSCF4445 (Copy)



DSCF4446 (Copy)



DSCF4447 (Copy)



DSCF4448 (Copy)

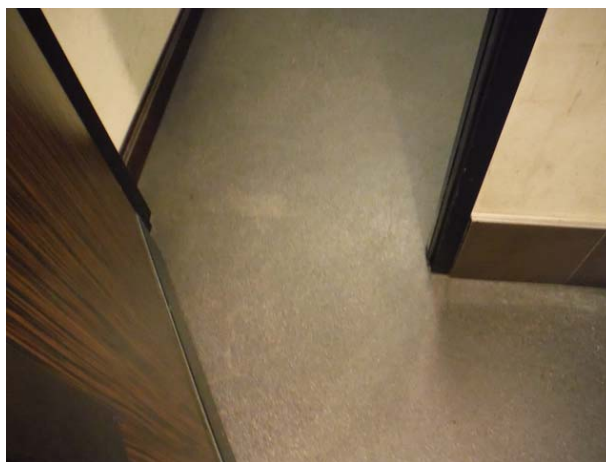
Levi's Stadium Access Inspection - Restaurants

4900 Marie P. DeBartolo Way, Santa Clara, California 95054

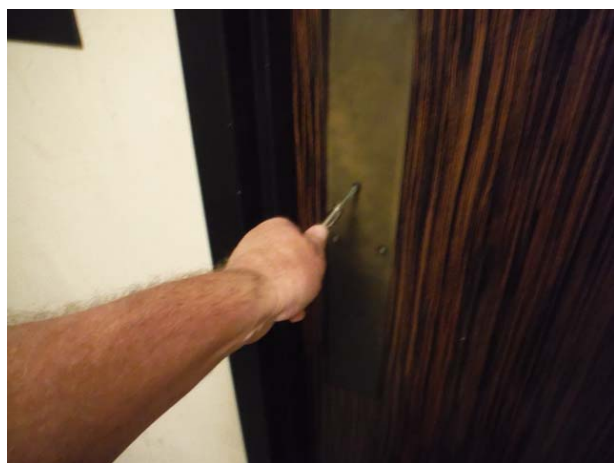
Survey Date: March 7, 2018



DSCF4449 (Copy)



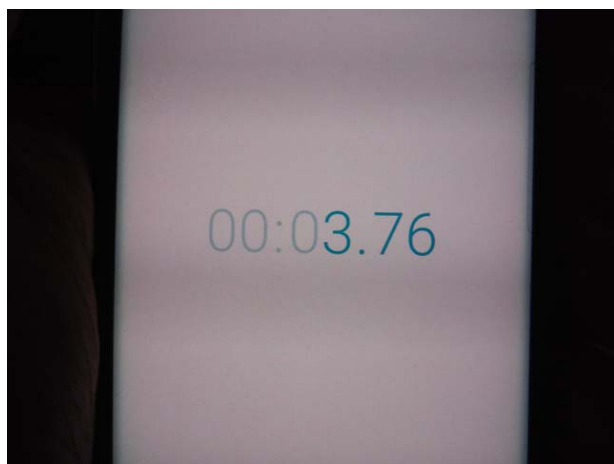
DSCF4450 (Copy)



DSCF4451 (Copy)



DSCF4452 (Copy)



DSCF4453 (Copy)



DSCF4454 (Copy)

Levi's Stadium Access Inspection - Restaurants

4900 Marie P. DeBartolo Way, Santa Clara, California 95954

Survey Date: March 7, 2018



DSCF4455 (Copy)



DSCF4456 (Copy)



DSCF4457 (Copy)



DSCF4458 (Copy)



DSCF4459 (Copy)



DSCF4460 (Copy)

Levi's Stadium Access Inspection - Restaurants

4900 Marie P. DeBartolo Way, Santa Clara, California 95954

Survey Date: March 7, 2018



DSCF4461 (Copy)



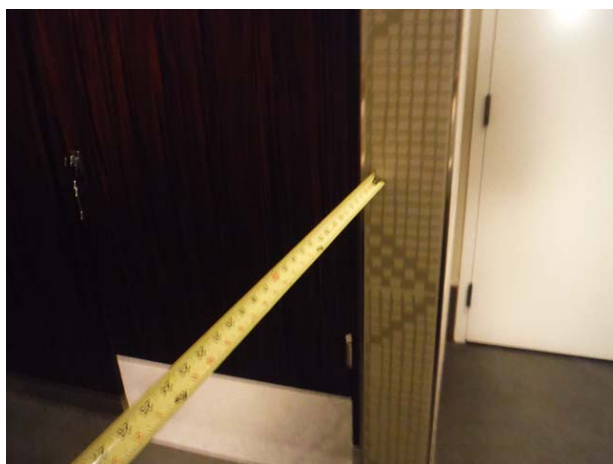
DSCF4462 (Copy)



DSCF4463 (Copy)



DSCF4464 (Copy)



DSCF4465 (Copy)



DSCF4466 (Copy)

Levi's Stadium Access Inspection - Restaurants

4900 Marie P. DeBartolo Way, Santa Clara, California 95954

Survey Date: March 7, 2018



DSCF4467 (Copy)



DSCF4468 (Copy)



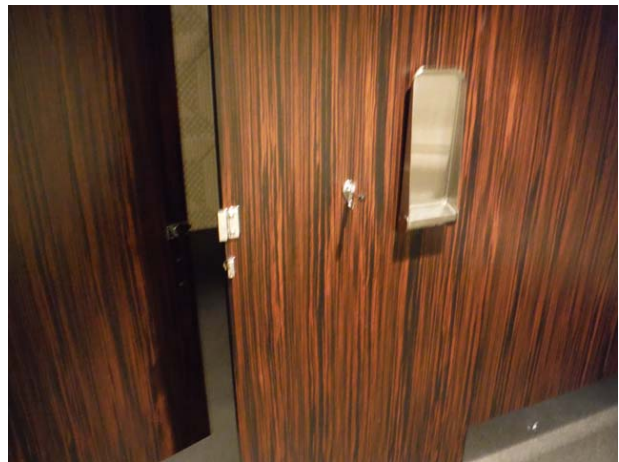
DSCF4469 (Copy)



DSCF4470 (Copy)



DSCF4471 (Copy)



DSCF4472 (Copy)

Levi's Stadium Access Inspection - Restaurants

4900 Marie P. DeBartolo Way, Santa Clara, California 95954

Survey Date: March 7, 2018



DSCF4473 (Copy)



DSCF4474 (Copy)



DSCF4475 (Copy)



DSCF4476 (Copy)



DSCF4477 (Copy)



DSCF4478 (Copy)

Levi's Stadium Access Inspection - Restaurants

4900 Marie P. DeBartolo Way, Santa Clara, California 95954

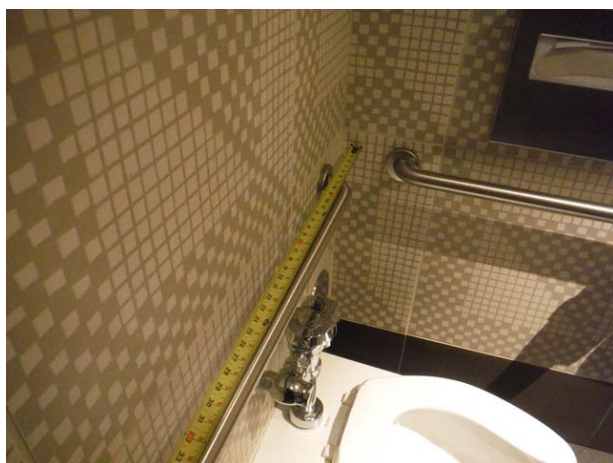
Survey Date: March 7, 2018



DSCF4479 (Copy)



DSCF4480 (Copy)



DSCF4481 (Copy)



DSCF4482 (Copy)



DSCF4483 (Copy)



DSCF4484 (Copy)

Levi's Stadium Access Inspection - Restaurants

4900 Marie P. DeBartolo Way, Santa Clara, California 95954

Survey Date: March 7, 2018



DSCF4485 (Copy)



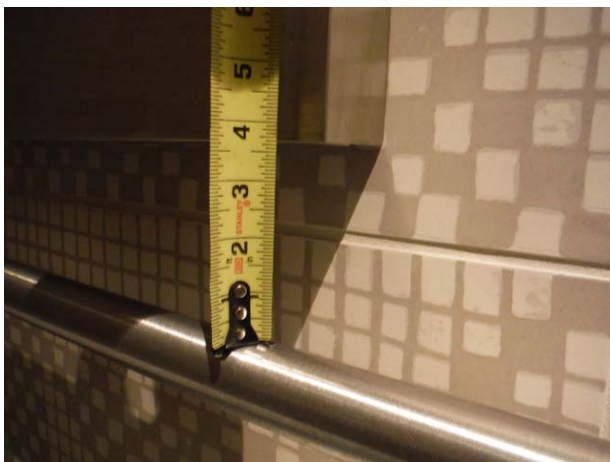
DSCF4486 (Copy)



DSCF4487 (Copy)



DSCF4488 (Copy)



DSCF4489 (Copy)



DSCF4490 (Copy)

Levi's Stadium Access Inspection - Restaurants

4900 Marie P. DeBartolo Way, Santa Clara, California 95054

Survey Date: March 7, 2018



DSCF4491 (Copy)



DSCF4492 (Copy)



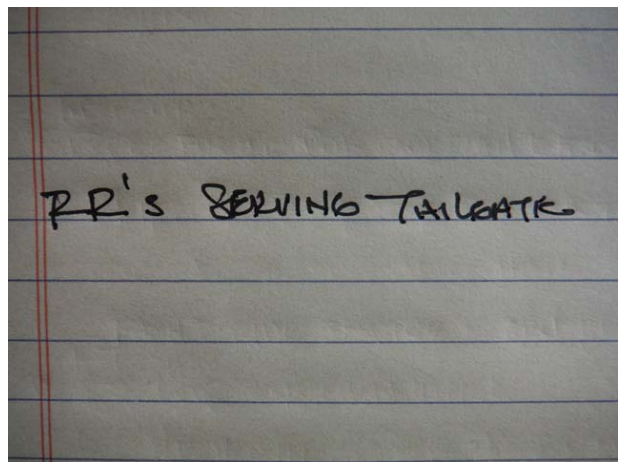
DSCF4493 (Copy)



DSCF4494 (Copy)



DSCF4495 (Copy)



DSCF4496 (Copy)

Levi's Stadium Access Inspection - Restaurants

4900 Marie P. DeBartolo Way, Santa Clara, California 95954

Survey Date: March 7, 2018



DSCF4497 (Copy)



DSCF4498 (Copy)



DSCF4499 (Copy)



DSCF4500 (Copy)

NOT USED



DSCF4501 (Copy)

DSCF4502 (Copy)

Levi's Stadium Access Inspection - Restaurants

4900 Marie P. DeBartolo Way, Santa Clara, California 95954

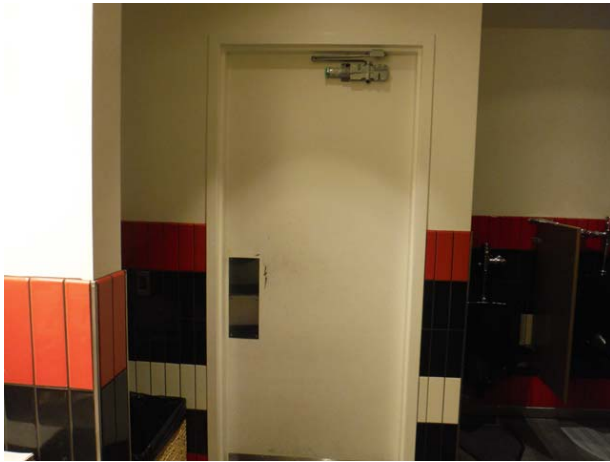
Survey Date: March 7, 2018



DSCF4503 (Copy)



DSCF4504 (Copy)



DSCF4506 (Copy)



DSCF4507 (Copy)



DSCF4508 (Copy)



DSCF4509 (Copy)

Levi's Stadium Access Inspection - Restaurants

4900 Marie P. DeBartolo Way, Santa Clara, California 95954

Survey Date: March 7, 2018



DSCF4510 (Copy)



DSCF4511 (Copy)



DSCF4512 (Copy)



DSCF4513 (Copy)



DSCF4514 (Copy)



DSCF4515 (Copy)

Levi's Stadium Access Inspection - Restaurants

4900 Marie P. DeBartolo Way, Santa Clara, California 95954

Survey Date: March 7, 2018



DSCF4516 (Copy)



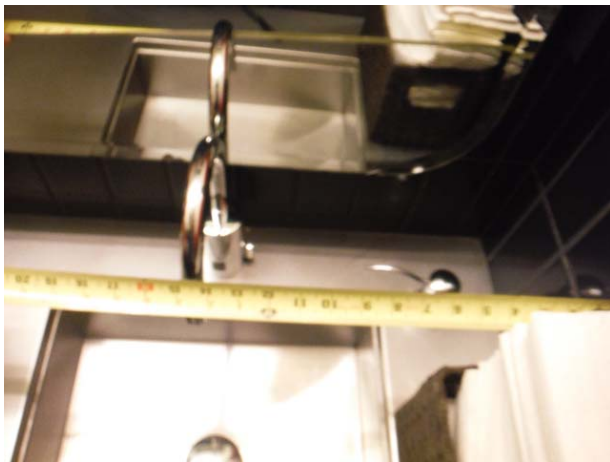
DSCF4517 (Copy)



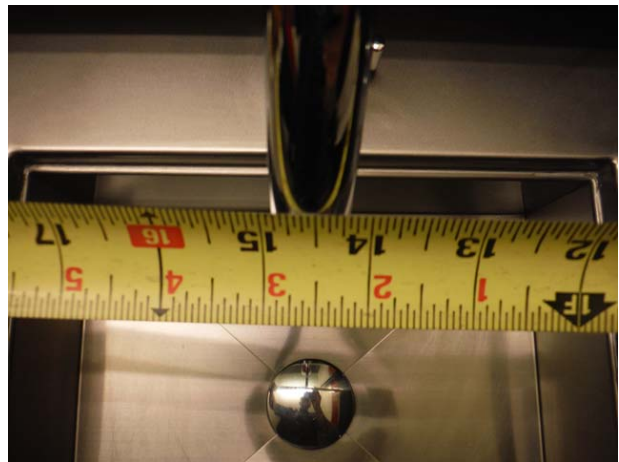
DSCF4518 (Copy)



DSCF4519 (Copy)



DSCF4520 (Copy)



DSCF4521 (Copy)

Levi's Stadium Access Inspection - Restaurants

4900 Marie P. DeBartolo Way, Santa Clara, California 95954

Survey Date: March 7, 2018



DSCF4522 (Copy)



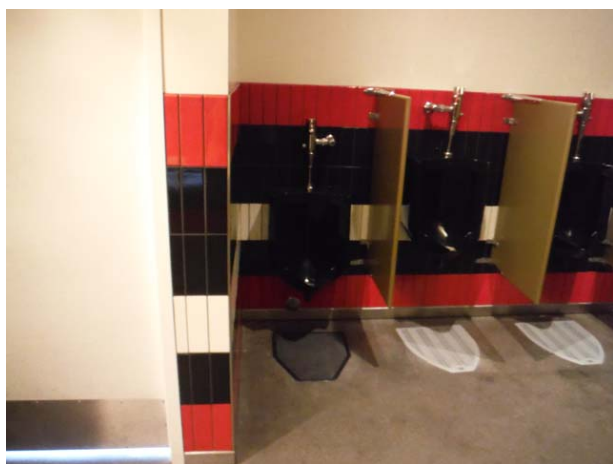
DSCF4523 (Copy)



DSCF4524 (Copy)



DSCF4525 (Copy)



DSCF4526 (Copy)



DSCF4527 (Copy)

Levi's Stadium Access Inspection - Restaurants

4900 Marie P. DeBartolo Way, Santa Clara, California 95954

Survey Date: March 7, 2018



DSCF4528 (Copy)



DSCF4529 (Copy)



DSCF4530 (Copy)



DSCF4531 (Copy)



DSCF4532 (Copy)



DSCF4533 (Copy)

Levi's Stadium Access Inspection - Restaurants

4900 Marie P. DeBartolo Way, Santa Clara, California 95954

Survey Date: March 7, 2018



DSCF4534 (Copy)



DSCF4535 (Copy)



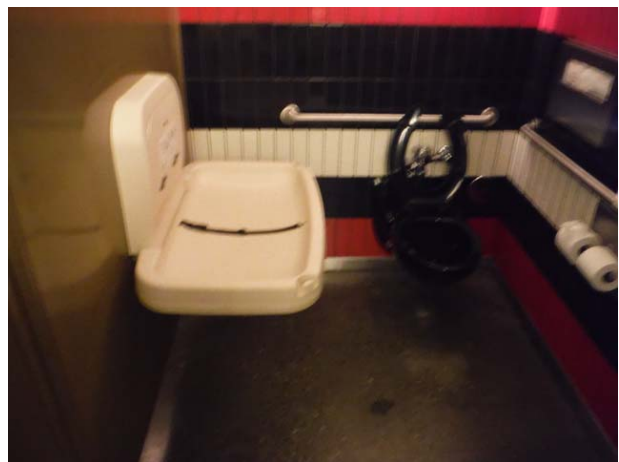
DSCF4536 (Copy)



DSCF4537 (Copy)



DSCF4538 (Copy)



DSCF4539 (Copy)

Levi's Stadium Access Inspection - Restaurants

4900 Marie P. DeBartolo Way, Santa Clara, California 95954

Survey Date: March 7, 2018



DSCF4540 (Copy)



DSCF4541 (Copy)



DSCF4542 (Copy)



DSCF4543 (Copy)



DSCF4544 (Copy)



DSCF4545 (Copy)

Levi's Stadium Access Inspection - Restaurants

4900 Marie P. DeBartolo Way, Santa Clara, California 95954

Survey Date: March 7, 2018



DSCF4546 (Copy)



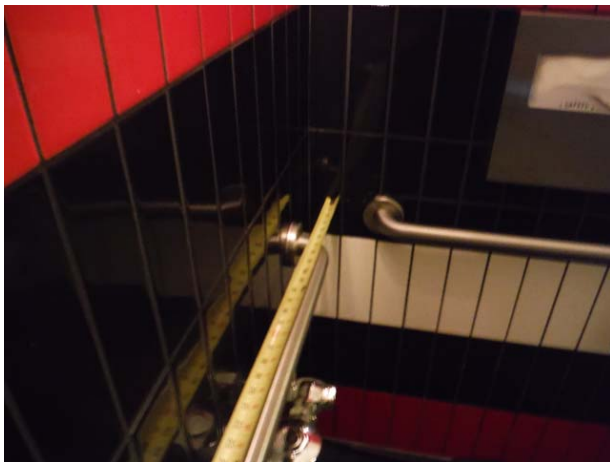
DSCF4547 (Copy)



DSCF4548 (Copy)



DSCF4549 (Copy)



DSCF4550 (Copy)



DSCF4551 (Copy)

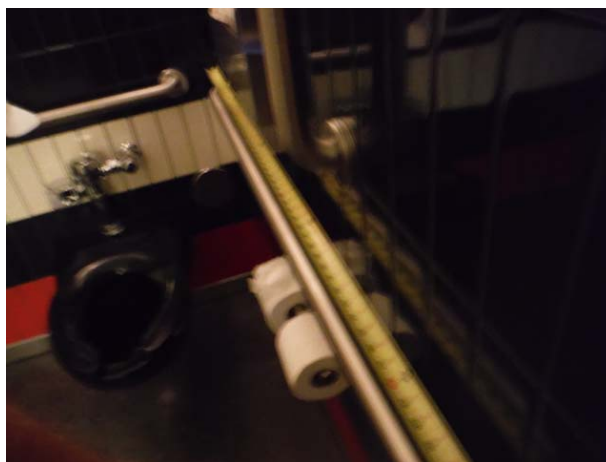
Levi's Stadium Access Inspection - Restaurants

4900 Marie P. DeBartolo Way, Santa Clara, California 95954

Survey Date: March 7, 2018



DSCF4552 (Copy)



DSCF4553 (Copy)



DSCF4554 (Copy)



DSCF4555 (Copy)



DSCF4556 (Copy)



DSCF4557 (Copy)

Levi's Stadium Access Inspection - Restaurants

4900 Marie P. DeBartolo Way, Santa Clara, California 95954

Survey Date: March 7, 2018



DSCF4558 (Copy)



DSCF4559 (Copy)



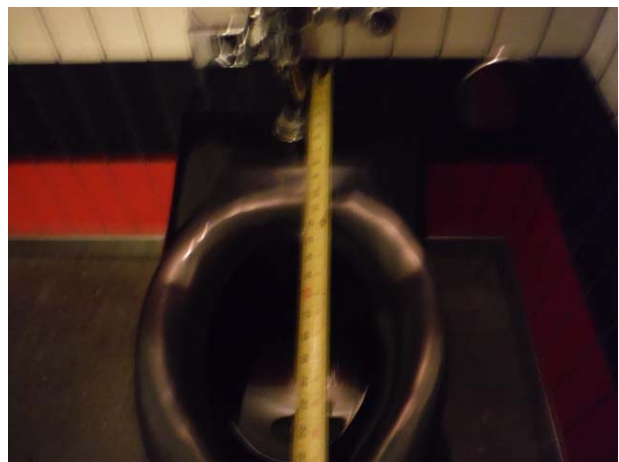
DSCF4560 (Copy)



DSCF4561 (Copy)



DSCF4562 (Copy)



DSCF4563 (Copy)

Levi's Stadium Access Inspection - Restaurants

4900 Marie P. DeBartolo Way, Santa Clara, California 95954

Survey Date: March 7, 2018



DSCF4564 (Copy)



DSCF4565 (Copy)



DSCF4566 (Copy)



DSCF4567 (Copy)



DSCF4568 (Copy)



DSCF4569 (Copy)

Levi's Stadium Access Inspection - Restaurants

4900 Marie P. DeBartolo Way, Santa Clara, California 95954

Survey Date: March 7, 2018



DSCF4570 (Copy)



DSCF4571 (Copy)



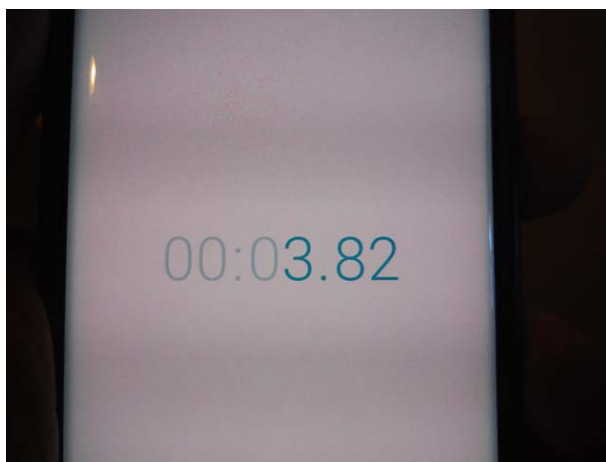
DSCF4572 (Copy)



DSCF4573 (Copy)



DSCF4574 (Copy)



DSCF4575 (Copy)

Levi's Stadium Access Inspection - Restaurants

4900 Marie P. DeBartolo Way, Santa Clara, California 95954

Survey Date: March 7, 2018

NOT USED



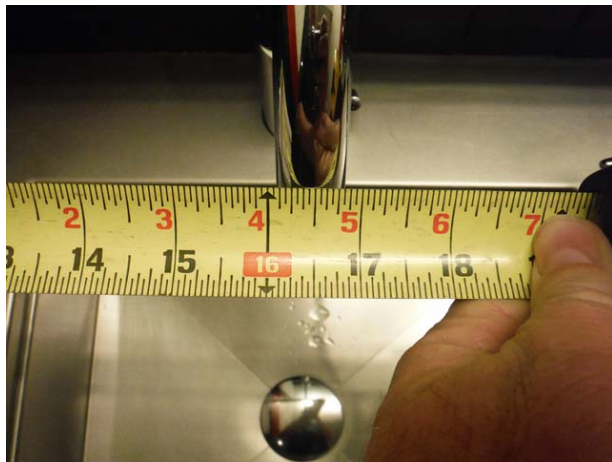
DSCF4577 (Copy)



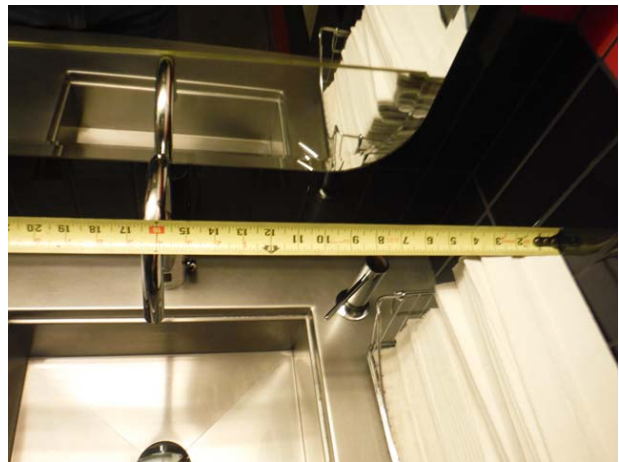
DSCF4576 (Copy)



DSCF4579 (Copy)



DSCF4580 (Copy)



DSCF4581 (Copy)

Levi's Stadium Access Inspection - Restaurants

4900 Marie P. DeBartolo Way, Santa Clara, California 95954

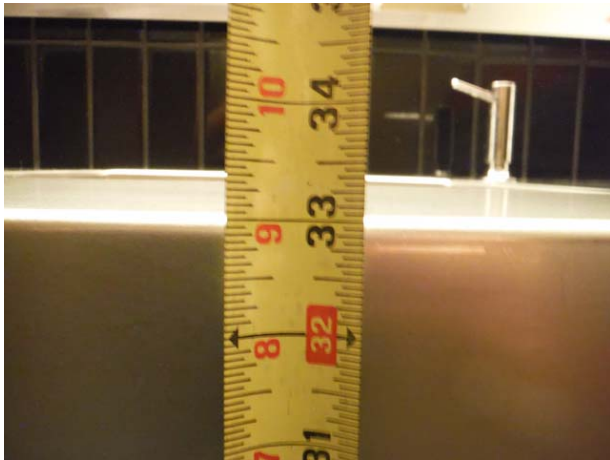
Survey Date: March 7, 2018



DSCF4582 (Copy)



DSCF4583 (Copy)



DSCF4584 (Copy)



DSCF4585 (Copy)



DSCF4586 (Copy)



DSCF4587 (Copy)

Levi's Stadium Access Inspection - Restaurants

4900 Marie P. DeBartolo Way, Santa Clara, California 95954

Survey Date: March 7, 2018



DSCF4588 (Copy)



DSCF4589 (Copy)



DSCF4590 (Copy)



DSCF4591 (Copy)



DSCF4592 (Copy)



DSCF4593 (Copy)

Levi's Stadium Access Inspection - Restaurants

4900 Marie P. DeBartolo Way, Santa Clara, California 95954

Survey Date: March 7, 2018



DSCF4594 (Copy)



DSCF4595 (Copy)



DSCF4596 (Copy)



DSCF4597 (Copy)



DSCF4598 (Copy)



DSCF4600 (Copy)

Levi's Stadium Access Inspection - Restaurants

4900 Marie P. DeBartolo Way, Santa Clara, California 95054

Survey Date: March 7, 2018



DSCF4601 (Copy)



DSCF4602 (Copy)



DSCF4604 (Copy)



DSCF4605 (Copy)



DSCF4606 (Copy)



DSCF4607 (Copy)

Levi's Stadium Access Inspection - Restaurants

4900 Marie P. DeBartolo Way, Santa Clara, California 95054

Survey Date: March 7, 2018



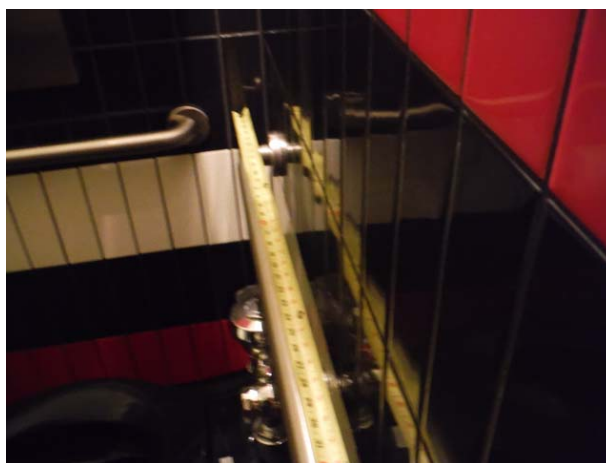
DSCF4610 (Copy)



DSCF4611 (Copy)



DSCF4612 (Copy)



DSCF4613 (Copy)



DSCF4614 (Copy)



DSCF4615 (Copy)

Levi's Stadium Access Inspection - Restaurants

4900 Marie P. DeBartolo Way, Santa Clara, California 95954

Survey Date: March 7, 2018

NOT USED



DSCF4617 (Copy)



DSCF4618 (Copy)



DSCF4619 (Copy)



DSCF4620 (Copy)

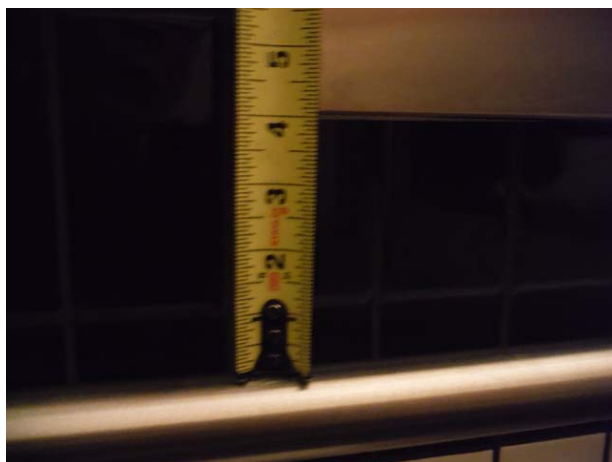


DSCF4621 (Copy)

Levi's Stadium Access Inspection - Restaurants

4900 Marie P. DeBartolo Way, Santa Clara, California 95954

Survey Date: March 7, 2018



DSCF4622 (Copy)



DSCF4623 (Copy)



DSCF4624 (Copy)



DSCF4625 (Copy)



DSCF4626 (Copy)



DSCF4627 (Copy)

Levi's Stadium Access Inspection - Restaurants

4900 Marie P. DeBartolo Way, Santa Clara, California 95954

Survey Date: March 7, 2018



DSCF4628 (Copy)



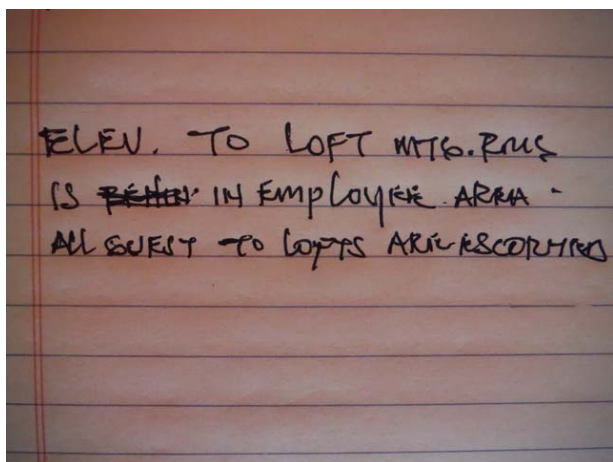
DSCF4629 (Copy)



DSCF4630 (Copy)



DSCF4631 (Copy)



DSCF4632 (Copy)



DSCF4633 (Copy)

Levi's Stadium Access Inspection - Restaurants

4900 Marie P. DeBartolo Way, Santa Clara, California 95954

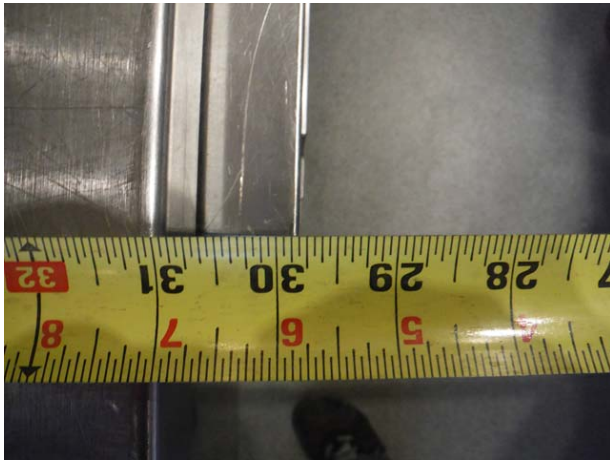
Survey Date: March 7, 2018



DSCF4634 (Copy)



DSCF4635 (Copy)



DSCF4636 (Copy)



DSCF4637 (Copy)



DSCF4638 (Copy)

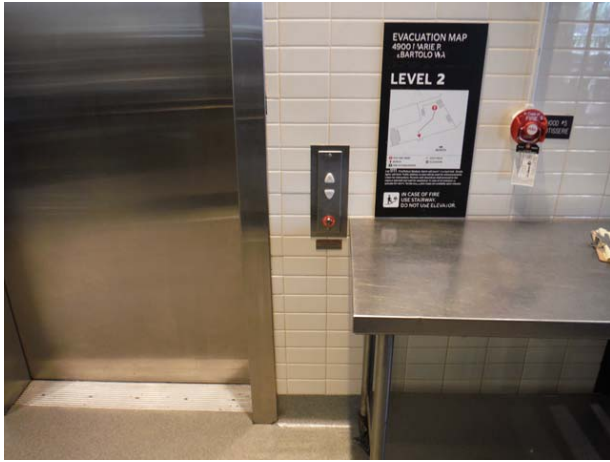


DSCF4639 (Copy)

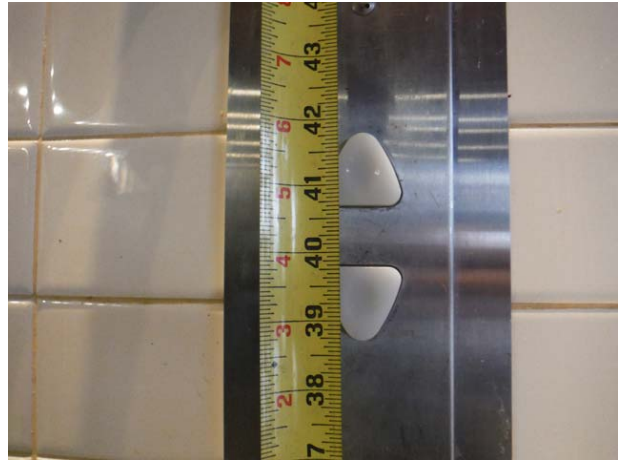
Levi's Stadium Access Inspection - Restaurants

4900 Marie P. DeBartolo Way, Santa Clara, California 95954

Survey Date: March 7, 2018



DSCF4640 (Copy)



DSCF4641 (Copy)



DSCF4642 (Copy)



DSCF4643 (Copy)



DSCF4644 (Copy)



DSCF4645 (Copy)

Levi's Stadium Access Inspection - Restaurants

4900 Marie P. DeBartolo Way, Santa Clara, California 95054

Survey Date: March 7, 2018

NOT USED



DSCF4647 (Copy)



DSCF4646 (Copy)



DSCF4649 (Copy)



DSCF4650 (Copy)

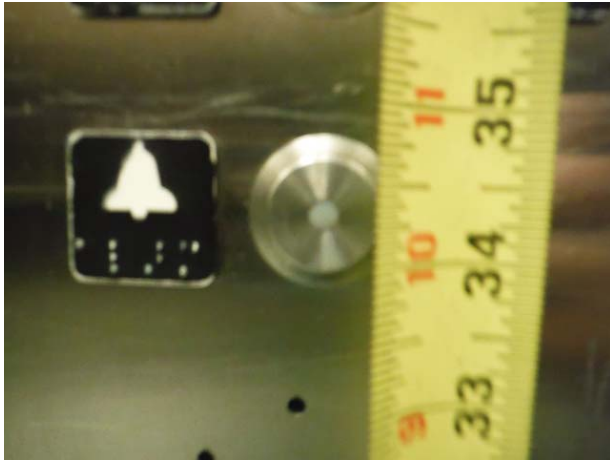


DSCF4651 (Copy)

Levi's Stadium Access Inspection - Restaurants

4900 Marie P. DeBartolo Way, Santa Clara, California 95054

Survey Date: March 7, 2018



DSCF4652 (Copy)



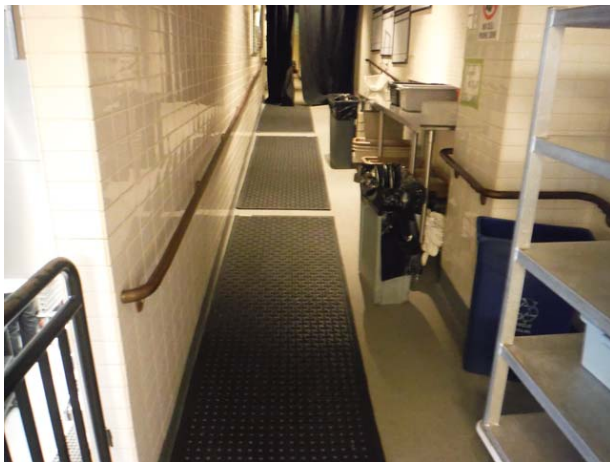
DSCF4653 (Copy)



DSCF4654 (Copy)



DSCF4655 (Copy)



DSCF4656 (Copy)



DSCF4657 (Copy)

Levi's Stadium Access Inspection - Restaurants

4900 Marie P. DeBartolo Way, Santa Clara, California 95954

Survey Date: March 7, 2018



DSCF4658 (Copy)



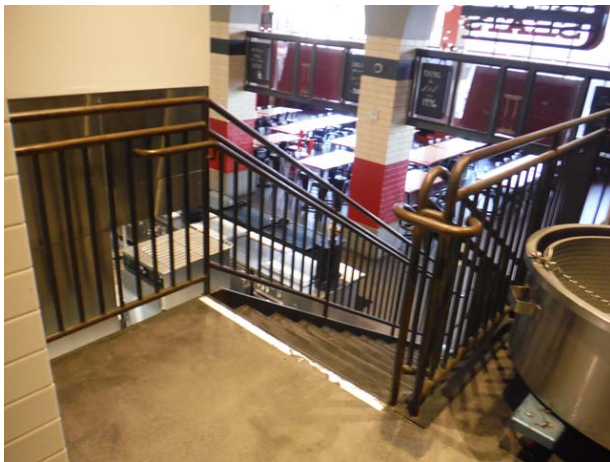
DSCF4659 (Copy)



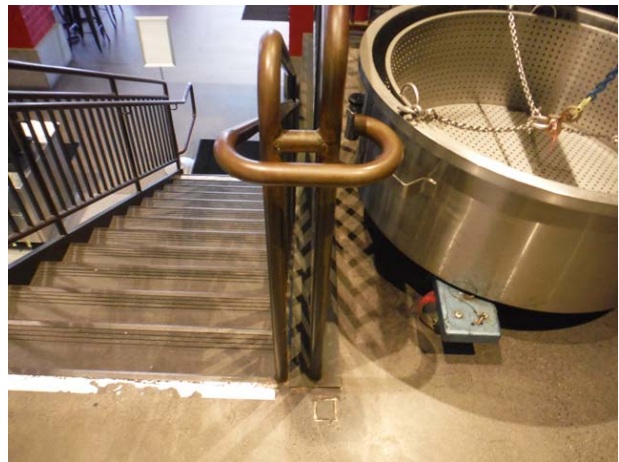
DSCF4660 (Copy)



DSCF4661 (Copy)



DSCF4662 (Copy)

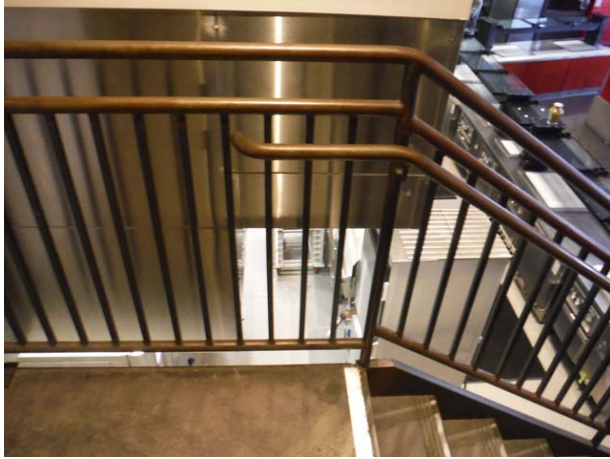


DSCF4663 (Copy)

Levi's Stadium Access Inspection - Restaurants

4900 Marie P. DeBartolo Way, Santa Clara, California 95954

Survey Date: March 7, 2018



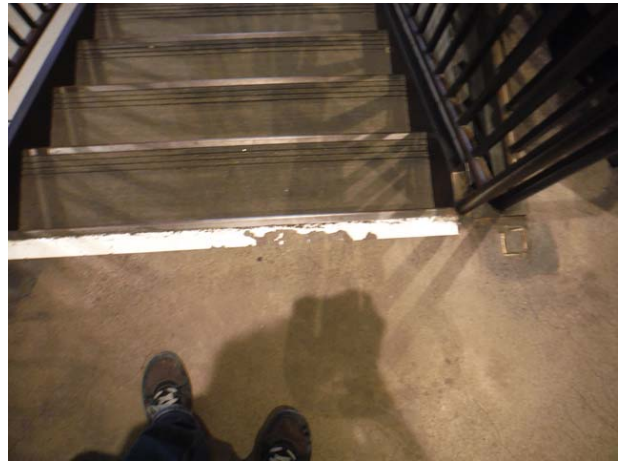
DSCF4664 (Copy)



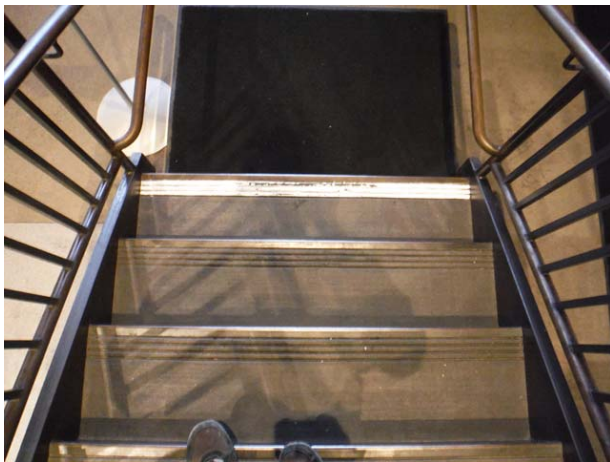
DSCF4665 (Copy)



DSCF4666 (Copy)



DSCF4667 (Copy)



DSCF4668 (Copy)



DSCF4669 (Copy)

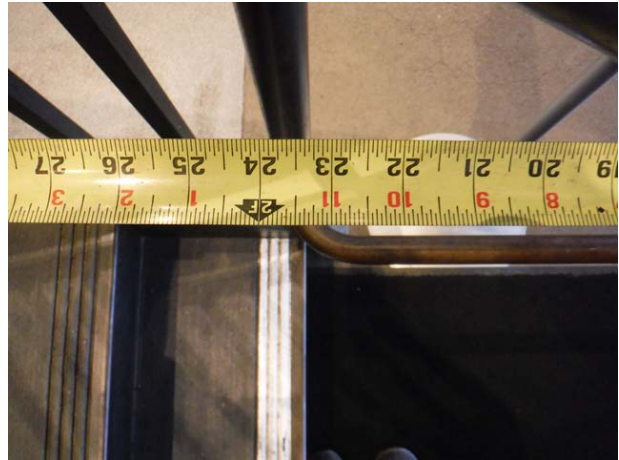
Levi's Stadium Access Inspection - Restaurants

4900 Marie P. DeBartolo Way, Santa Clara, California 95954

Survey Date: March 7, 2018



DSCF4670 (Copy)



DSCF4671 (Copy)



DSCF4672 (Copy)



DSCF4673 (Copy)



DSCF4674 (Copy)



DSCF4675 (Copy)

Levi's Stadium Access Inspection - Restaurants

4900 Marie P. DeBartolo Way, Santa Clara, California 95954

Survey Date: March 7, 2018



DSCF4676 (Copy)



DSCF4677 (Copy)



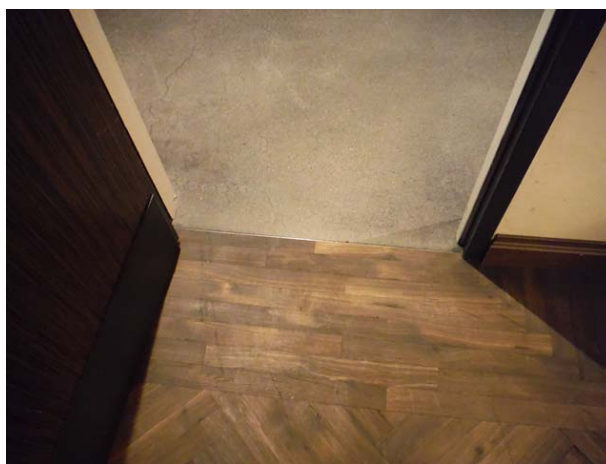
DSCF4678 (Copy)



DSCF4679 (Copy)



DSCF4680 (Copy)



DSCF4681 (Copy)

Levi's Stadium Access Inspection - Restaurants

4900 Marie P. DeBartolo Way, Santa Clara, California 95954

Survey Date: March 7, 2018



DSCF4682 (Copy)



DSCF4683 (Copy)



DSCF4684 (Copy)



DSCF4685 (Copy)



DSCF4686 (Copy)



DSCF4687 (Copy)

Levi's Stadium Access Inspection - Restaurants

4900 Marie P. DeBartolo Way, Santa Clara, California 95954

Survey Date: March 7, 2018



DSCF4688 (Copy)



DSCF4689 (Copy)



DSCF4690 (Copy)



DSCF4691 (Copy)



DSCF4692 (Copy)



DSCF4693 (Copy)

Levi's Stadium Access Inspection - Restaurants

4900 Marie P. DeBartolo Way, Santa Clara, California 95954

Survey Date: March 7, 2018



DSCF4694 (Copy)



DSCF4695 (Copy)



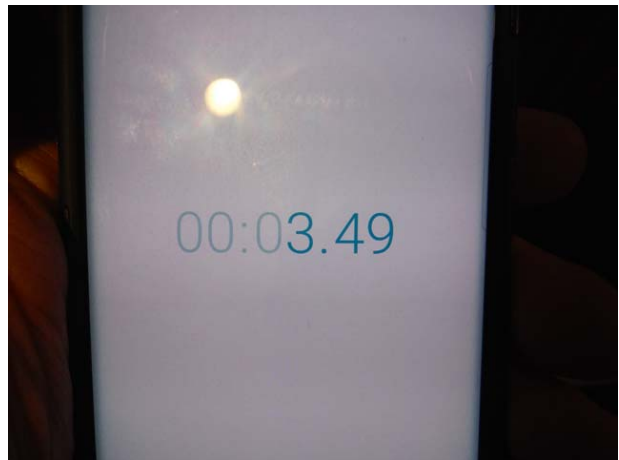
DSCF4696 (Copy)



DSCF4697 (Copy)



DSCF4698 (Copy)



DSCF4700 (Copy)

Levi's Stadium Access Inspection - Restaurants

4900 Marie P. DeBartolo Way, Santa Clara, California 95954

Survey Date: March 7, 2018



DSCF4701 (Copy)



DSCF4702 (Copy)



DSCF4703 (Copy)



DSCF4704 (Copy)



DSCF4705 (Copy)



DSCF4706 (Copy)

Levi's Stadium Access Inspection - Restaurants

4900 Marie P. DeBartolo Way, Santa Clara, California 95954

Survey Date: March 7, 2018



DSCF4707 (Copy)



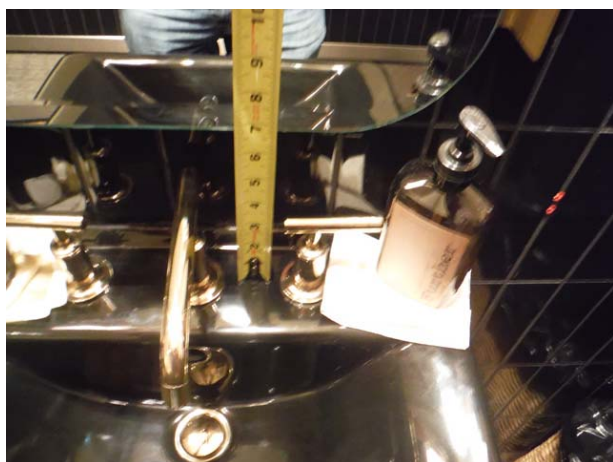
DSCF4708 (Copy)



DSCF4709 (Copy)



DSCF4710 (Copy)



DSCF4711 (Copy)



DSCF4712 (Copy)

Levi's Stadium Access Inspection - Restaurants

4900 Marie P. DeBartolo Way, Santa Clara, California 95954

Survey Date: March 7, 2018



DSCF4713 (Copy)



DSCF4714 (Copy)



DSCF4715 (Copy)



DSCF4716 (Copy)



DSCF4717 (Copy)



DSCF4718 (Copy)

Levi's Stadium Access Inspection - Restaurants

4900 Marie P. DeBartolo Way, Santa Clara, California 95954

Survey Date: March 7, 2018



DSCF4719 (Copy)



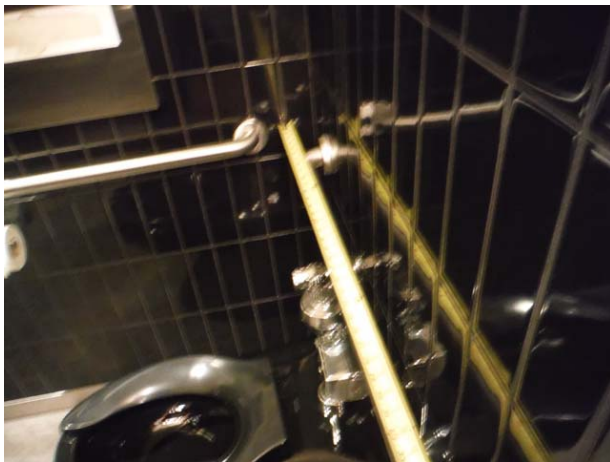
DSCF4720 (Copy)



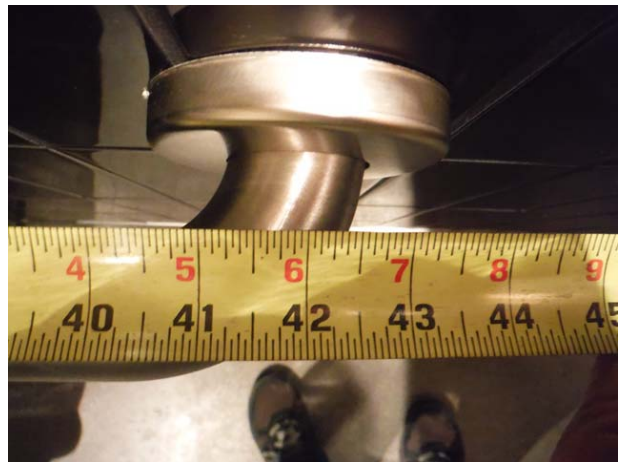
DSCF4721 (Copy)



DSCF4722 (Copy)



DSCF4723 (Copy)



DSCF4724 (Copy)

Levi's Stadium Access Inspection - Restaurants

4900 Marie P. DeBartolo Way, Santa Clara, California 95054

Survey Date: March 7, 2018



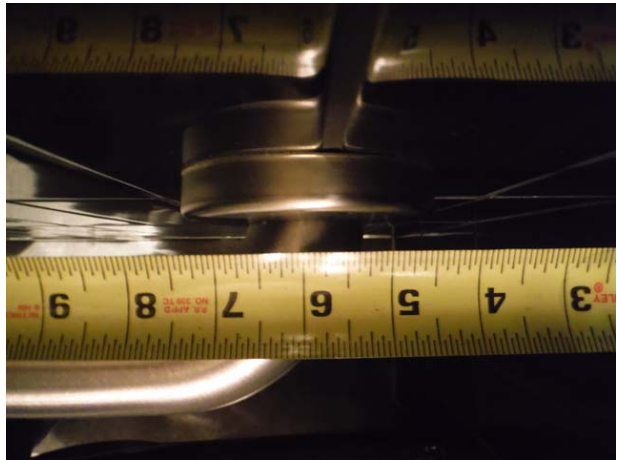
DSCF4725 (Copy)



DSCF4726 (Copy)



DSCF4727 (Copy)



DSCF4728 (Copy)



DSCF4729 (Copy)



DSCF4730 (Copy)

Levi's Stadium Access Inspection - Restaurants

4900 Marie P. DeBartolo Way, Santa Clara, California 95954

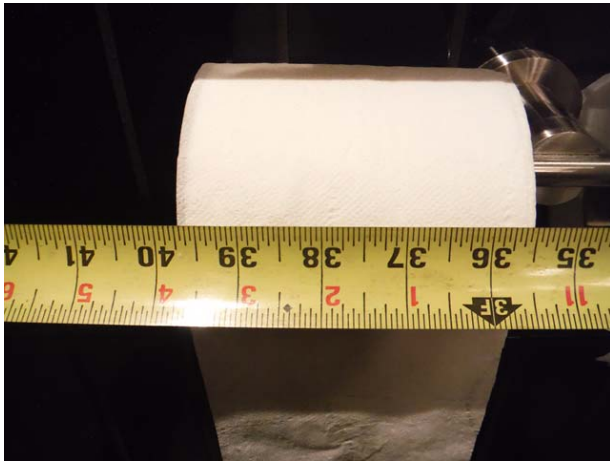
Survey Date: March 7, 2018



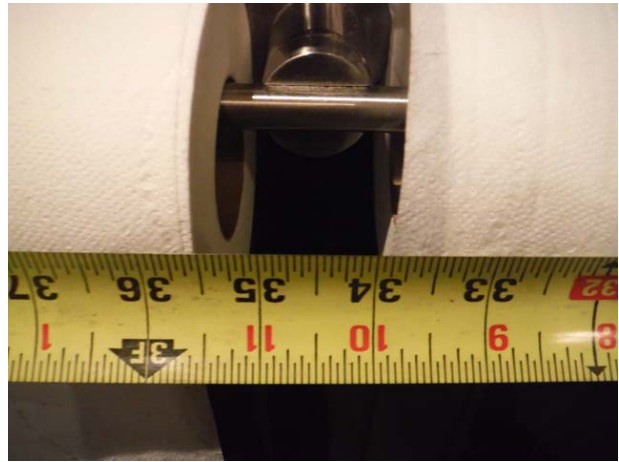
DSCF4731 (Copy)



DSCF4732 (Copy)



DSCF4733 (Copy)



DSCF4734 (Copy)



DSCF4735 (Copy)



DSCF4736 (Copy)

Levi's Stadium Access Inspection - Restaurants

4900 Marie P. DeBartolo Way, Santa Clara, California 95954

Survey Date: March 7, 2018



DSCF4737 (Copy)



DSCF4738 (Copy)



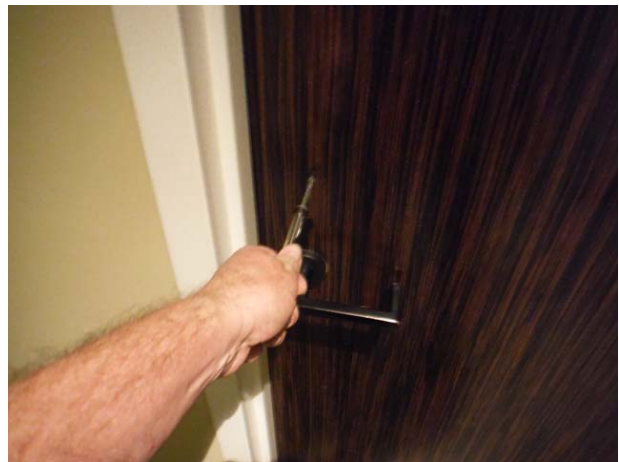
DSCF4739 (Copy)



DSCF4740 (Copy)



DSCF4741 (Copy)



DSCF4742 (Copy)

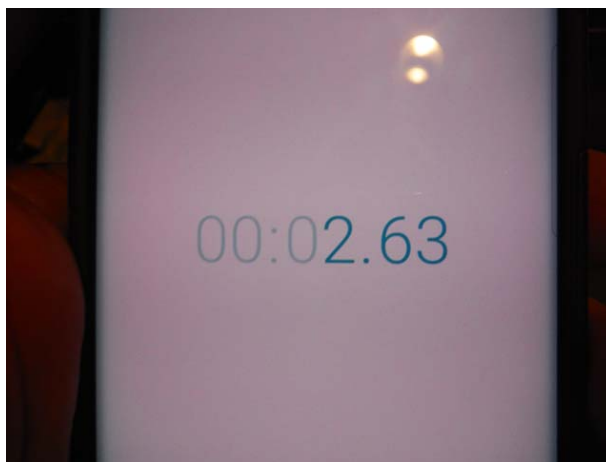
Levi's Stadium Access Inspection - Restaurants

4900 Marie P. DeBartolo Way, Santa Clara, California 95954

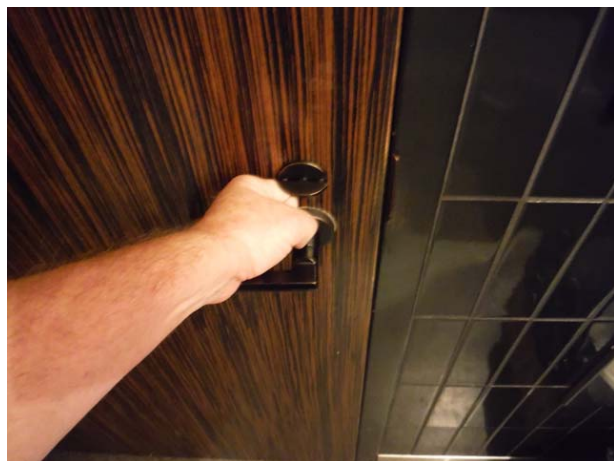
Survey Date: March 7, 2018



DSCF4743 (Copy)



DSCF4744 (Copy)



DSCF4745 (Copy)



DSCF4746 (Copy)



DSCF4747 (Copy)



DSCF4748 (Copy)

Levi's Stadium Access Inspection - Restaurants

4900 Marie P. DeBartolo Way, Santa Clara, California 95954

Survey Date: March 7, 2018



DSCF4749 (Copy)



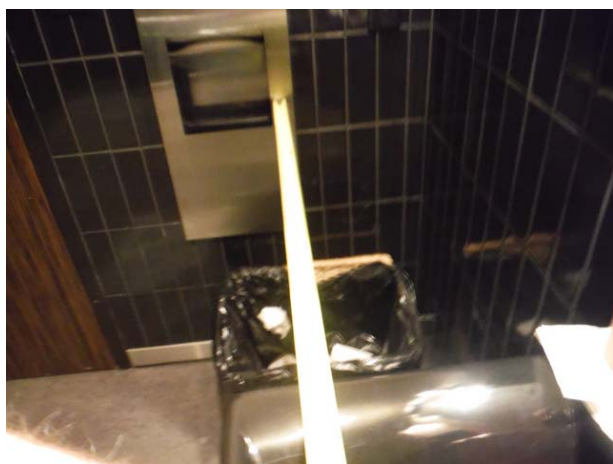
DSCF4750 (Copy)



DSCF4751 (Copy)



DSCF4752 (Copy)



DSCF4753 (Copy)



DSCF4754 (Copy)

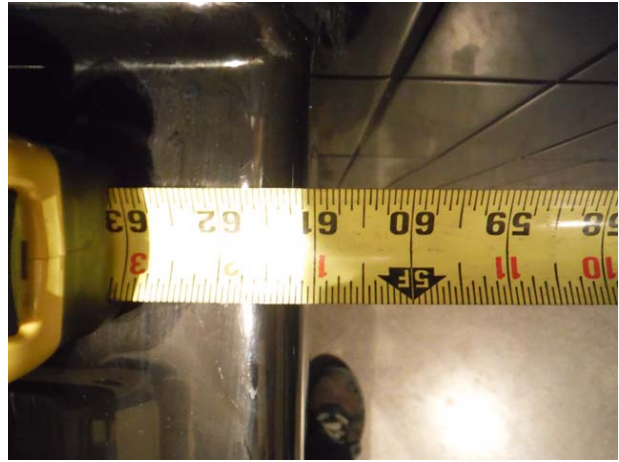
Levi's Stadium Access Inspection - Restaurants

4900 Marie P. DeBartolo Way, Santa Clara, California 95954

Survey Date: March 7, 2018



DSCF4755 (Copy)



DSCF4756 (Copy)



DSCF4757 (Copy)



DSCF4758 (Copy)



DSCF4759 (Copy)



DSCF4760 (Copy)

Levi's Stadium Access Inspection - Restaurants

4900 Marie P. DeBartolo Way, Santa Clara, California 95954

Survey Date: March 7, 2018



DSCF4761 (Copy)



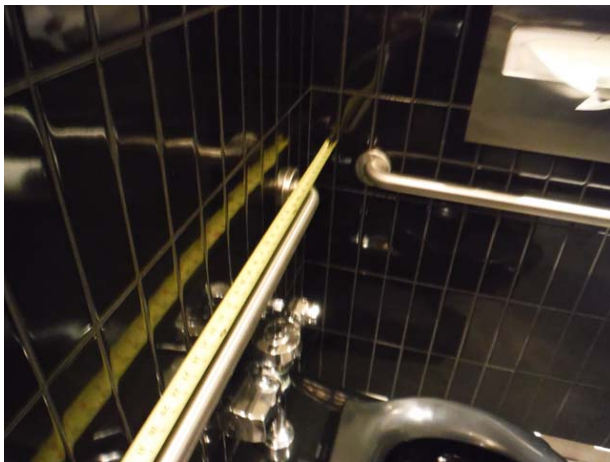
DSCF4762 (Copy)



DSCF4763 (Copy)



DSCF4764 (Copy)



DSCF4765 (Copy)



DSCF4766 (Copy)

Levi's Stadium Access Inspection - Restaurants

4900 Marie P. DeBartolo Way, Santa Clara, California 95954

Survey Date: March 7, 2018



DSCF4767 (Copy)



DSCF4768 (Copy)



DSCF4769 (Copy)



DSCF4770 (Copy)



DSCF4771 (Copy)



DSCF4772 (Copy)

Levi's Stadium Access Inspection - Restaurants

4900 Marie P. DeBartolo Way, Santa Clara, California 95954

Survey Date: March 7, 2018



DSCF4773 (Copy)



DSCF4774 (Copy)



DSCF4775 (Copy)



DSCF4776 (Copy)



DSCF4777 (Copy)



DSCF4778 (Copy)

Levi's Stadium Access Inspection - Restaurants

4900 Marie P. DeBartolo Way, Santa Clara, California 95954

Survey Date: March 7, 2018



DSCF4779 (Copy)



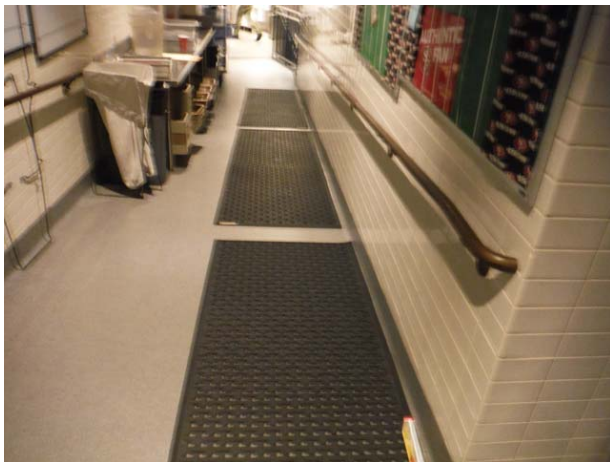
DSCF4780 (Copy)



DSCF4781 (Copy)



DSCF4782 (Copy)



DSCF4783 (Copy)

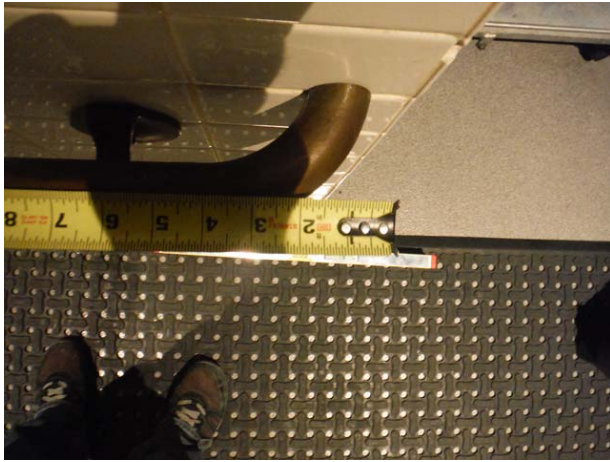


DSCF4784 (Copy)

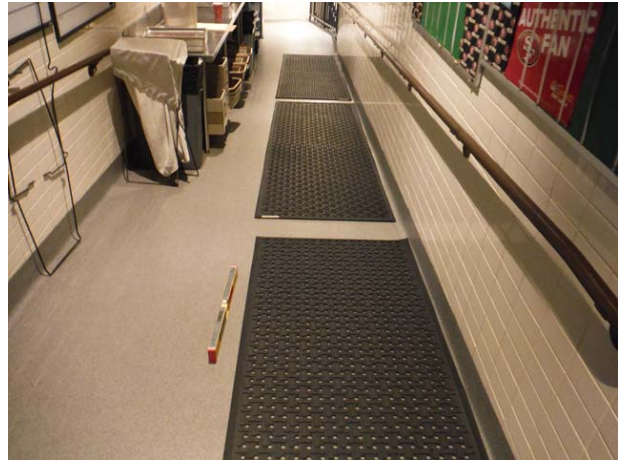
Levi's Stadium Access Inspection - Restaurants

4900 Marie P. DeBartolo Way, Santa Clara, California 95954

Survey Date: March 7, 2018



DSCF4785 (Copy)



DSCF4786 (Copy)



DSCF4787 (Copy)



DSCF4788 (Copy)



DSCF4789 (Copy)



DSCF4791 (Copy)

Levi's Stadium Access Inspection - Restaurants

4900 Marie P. DeBartolo Way, Santa Clara, California 95054

Survey Date: March 7, 2018



DSCF4792 (Copy)



DSCF4793 (Copy)