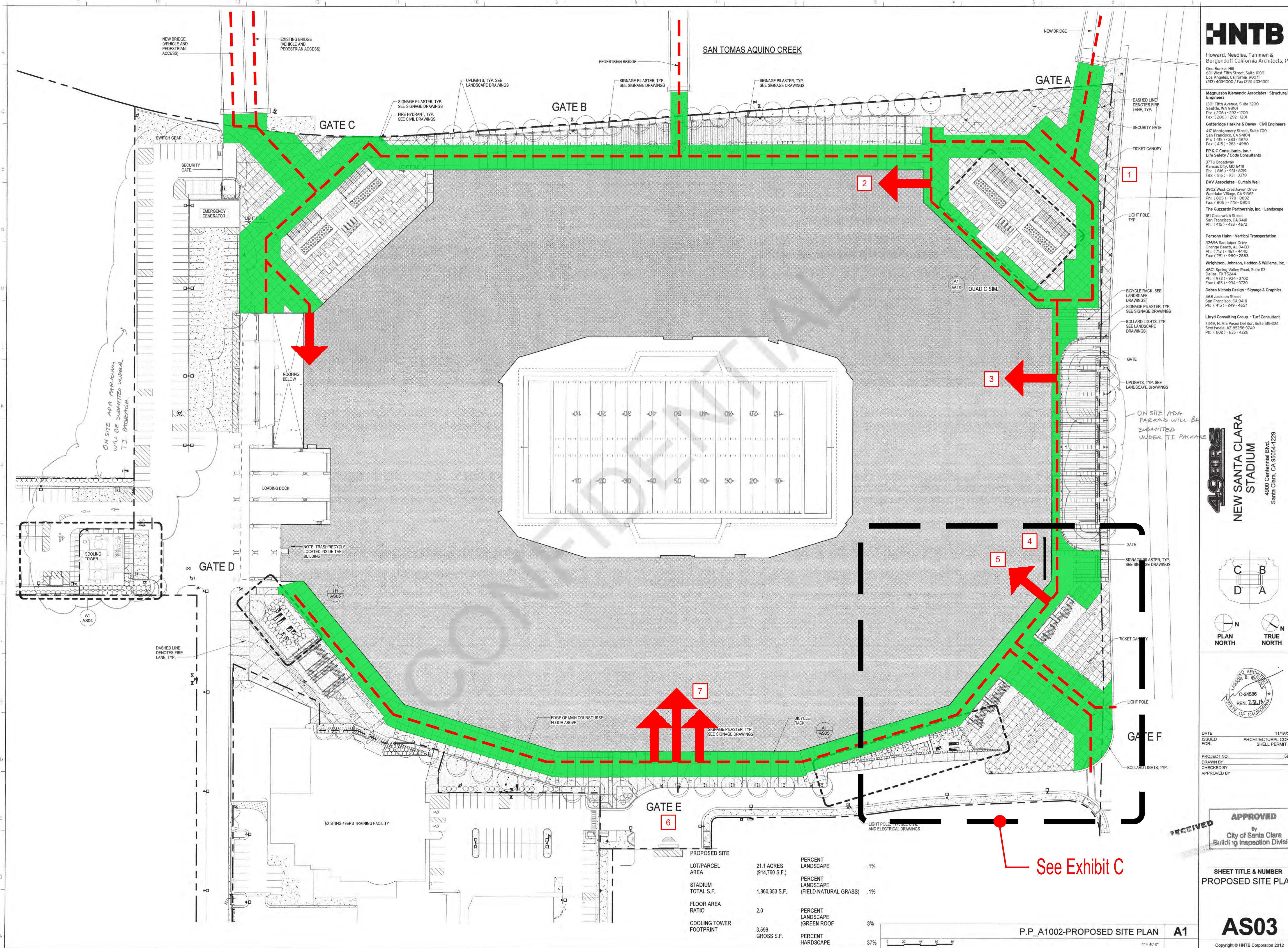


**SETTLEMENT
AGREEMENT
EXHIBIT B**

For Path of Travel Continuation
See Exhibit J

For Path of Travel Continuation
See Exhibit J

For Path of Travel Continuation
See Exhibit J



HNTB
Howard, Needles, Tammen & Bergendoff California Architects, P.C.
One Banker Hill
601 West Fifth Street, Suite 2000
Los Angeles, California 90071
(213) 463-1000 / Fax (213) 463-1001

Magnuson Klemencic Associates - Structural Engineers
1201 Fifth Avenue, Suite 3200
Seattle, WA 98101
Ph: (206) 320-1200
Fax: (206) 320-1205

Centerline Heavens & Dewey - Civil Engineers
417 Montgomery Street, Suite 100
San Francisco, CA 94104
Ph: (415) 283-4970
Ph: (415) 381-9993
Fax: (415) 381-9993

FP & C Consultants, Inc. - Life Safety / Code Consultants
3770 Broadway
Kansas City, MO 64111
Ph: (816) 931-8279
Fax: (816) 931-3278

DWV Associates - Curtain Wall
3902 West Croftaven Drive
Westlake Village, CA 91362
Ph: (805) 778-0954
Fax: (805) 778-0954

The Guardians Partnership, Inc. - Landscape
181 Greenwch Street
San Francisco, CA 94101
Ph: (415) 433-4672

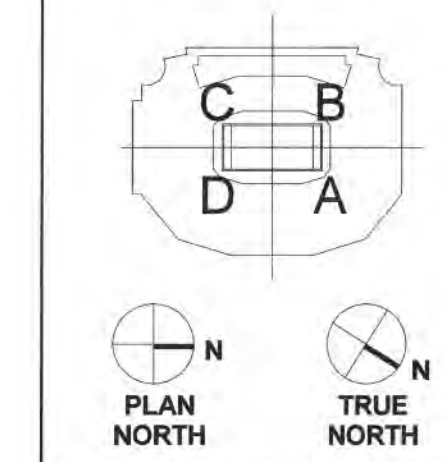
Persohn Hahn - Vertical Transportation
32696 Sandpaper Drive
Orange Beach, AL 36633
Ph: (713) 467-4460
Fax: (251) 980-3183

Wrightson, Johnson, Hasdon & Williams, Inc. - AV
4802 Spring Valley Road, Suite 103
Phila, PA 19124
Ph: (415) 934-3720
Fax: (415) 934-3720

Delora Nichols Design - Signage & Graphics
458 Jackson Street
San Francisco, CA 94111
Ph: (415) 240-4607

Lloyd Consulting Group - Turf Consultant
7349 N. Via Pineda Del Sur, Suite 555-324
Scottsdale, AZ 85258-3749
Ph: (602) 433-4026

49ERS
NEW SANTA CLARA
STADIUM
4900 Centennial Blvd.
Santa Clara, CA 95054-1229



DATE: 11/15/2012
ISSUED FOR: ARCHITECTURAL CORE & SHELL PERMIT SET

PROJECT NO.: 58059
DRAWN BY:
CHECKED BY:
APPROVED BY:

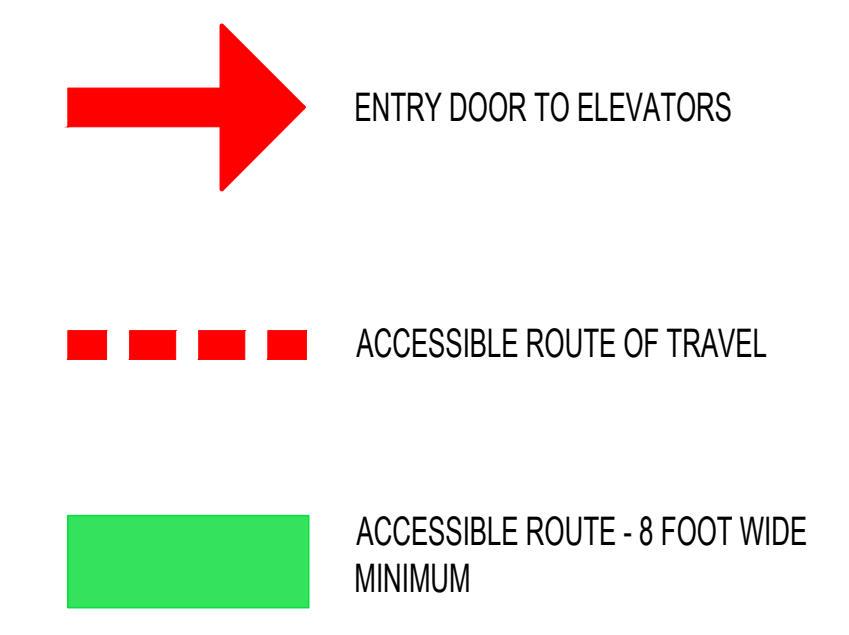
APPROVED
By
City of Santa Clara
Building Inspection Division

RECEIVED

SHEET TITLE & NUMBER
PROPOSED SITE PLAN
AS03

Copyright © HNTB Corporation 2012

- 1 STADIUM ENTRY GATE A - ACCESSIBLE ROUTE FULL LENGTH X 8 FOOT WIDE EACH SIDE
- 2 ACCESS TO ELEVATOR B1 & LEVEL 300 ACCESSIBLE SEATING, LEVEL 400 CLUB & ACCESSIBLE SEATING
- 3 ENTRY DOOR TO 49ERS MUSEUM & ELEVATORS B5 & B6 WITH ACCESS TO LEVEL 300 ACCESSIBLE SEATING, LEVEL 500 SUITES, LEVEL 700 ACCESSIBLE SEATING
- 4 BOX OFFICE WINDOWS
- 5 TO ELEVATORS A4 & A5 ACCESS TO FIELD LEVEL ACCESSIBLE SEATING, 300 LEVEL ACCESSIBLE SEATING, 500 LEVEL SUITES & 700 LEVEL ACCESSIBLE SEATING
- 6 ENTRY DOORS TO ELEVATORS A6 & A7 ACCESS TO 300 LEVEL ACCESSIBLE SEATING, ACCESS TO 400 LEVEL CLUB
- 7 ENTRY DOOR WITH ACCESS TO FIELD LEVEL SEATING & ELEVATORS A1, A2 & A3 WITH ACCESS TO ADMINISTRATIVE OFFICES, 400 LEVEL CLUB, 500 LEVEL SUITES



THE COMPLETED ACCESS BARRIER REMOVAL WORK SHALL COMPLY WITH THE 2010 AMERICANS WITH DISABILITIES ACT STANDARDS AND THE CALIFORNIA BUILDING CODE IN EFFECT AT THE TIME OF THE WORK.

Pacific Access Consulting & Gary Waters Architect
1421 Guerneville Road, Suite 230, Santa Rosa, CA 95403
Tel: 707/523-0849 Cell: 707/479-3872
Email: Gary@pam-architects.com

Seal:

Revisions:

MARK	DATE	REVISION
△	09/14/19	ISSUED FOR REVIEW

Project:
LEVI STADIUM ACCESSIBILITY

4900 Centennial Blvd.
Santa Clara, CA

Sheet Description:
SITE PLAN GATES A, B, C, E, & F

Job No.: 19-008 Scale: AS SHOWN
Dwg File Name: Exhibit-B.dwg
Sheet: **EXHIBIT B**

Site Plan - Gates A, B, C, E & F

Scale: NTS